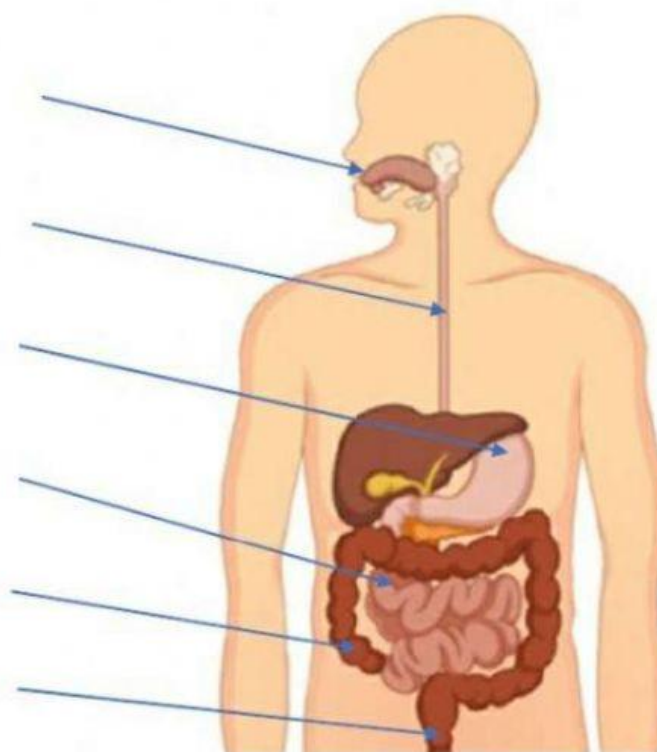


1. Drag the name to the correct place.



esophagus

large intestine

anus

stomach

small intestine

mouth

2. Match the words to the correct answer.

esophagus

It has teeth that break the food into small pieces.

large intestine

It is a long tube. Food goes down here to the stomach.

anus

It is like a bag. The food stays here for about three hours.

stomach

It is a very long thin tube. There are lots of blood vessels around the tube.

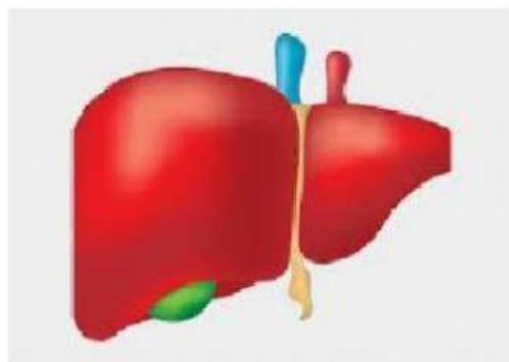
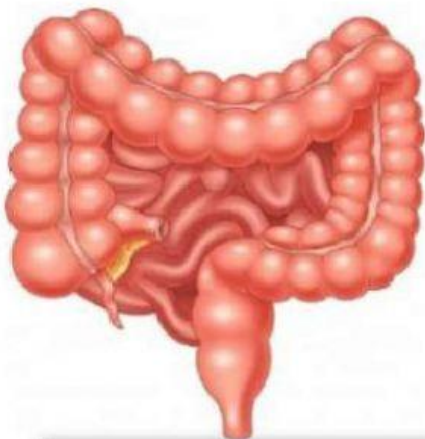
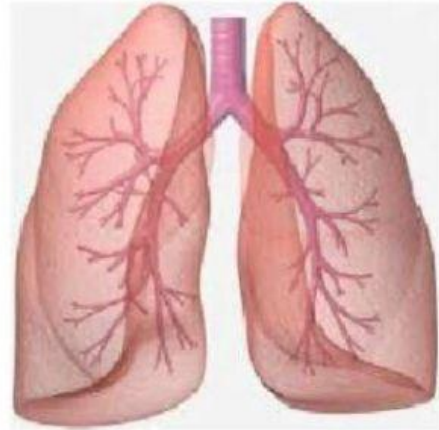
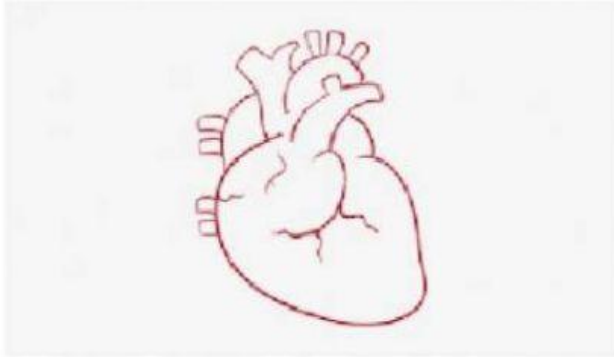
small intestine

What our body doesn't need goes out through it when we go to the toilet.

mouth

It is a wide tube. It connects to the anus.

Q: Select the names of given internal organs.



Fill in the words from the word band in the sentences below.

Word Box

large Intestine
digestive system

esophagus
mouth

anus
saliva

liver
small intestine

1. The breaks down the food we eat.
2. Digestions begins in the when you chew and swallow.
3. A watery liquid called makes the food wet and soft, and it has a chemical that helps digest the food.
4. The connects the bottom of your throat to your stomach.
5. The is a long narrow tube that has spongy walls that soak up nutrients from food.
6. The is on the right side of the body near the lowest rib. Its job is to clean the blood.

1. Please drag the matching digestion terms to their correct definitions in the items below.

digestion

ingestion

absorption

assimilation

egestion

Definitions	Terms
a. The removal of undigested food materials from the body as faeces.	
b. Placing food in the alimentary canal.	
c. The breakdown of complex food substances into simple soluble ones that the body's cells can use.	
d. The incorporation of food nutrients into a cell's protoplasm	
e. The transfer of food nutrients from the alimentary canal and into the blood stream.	