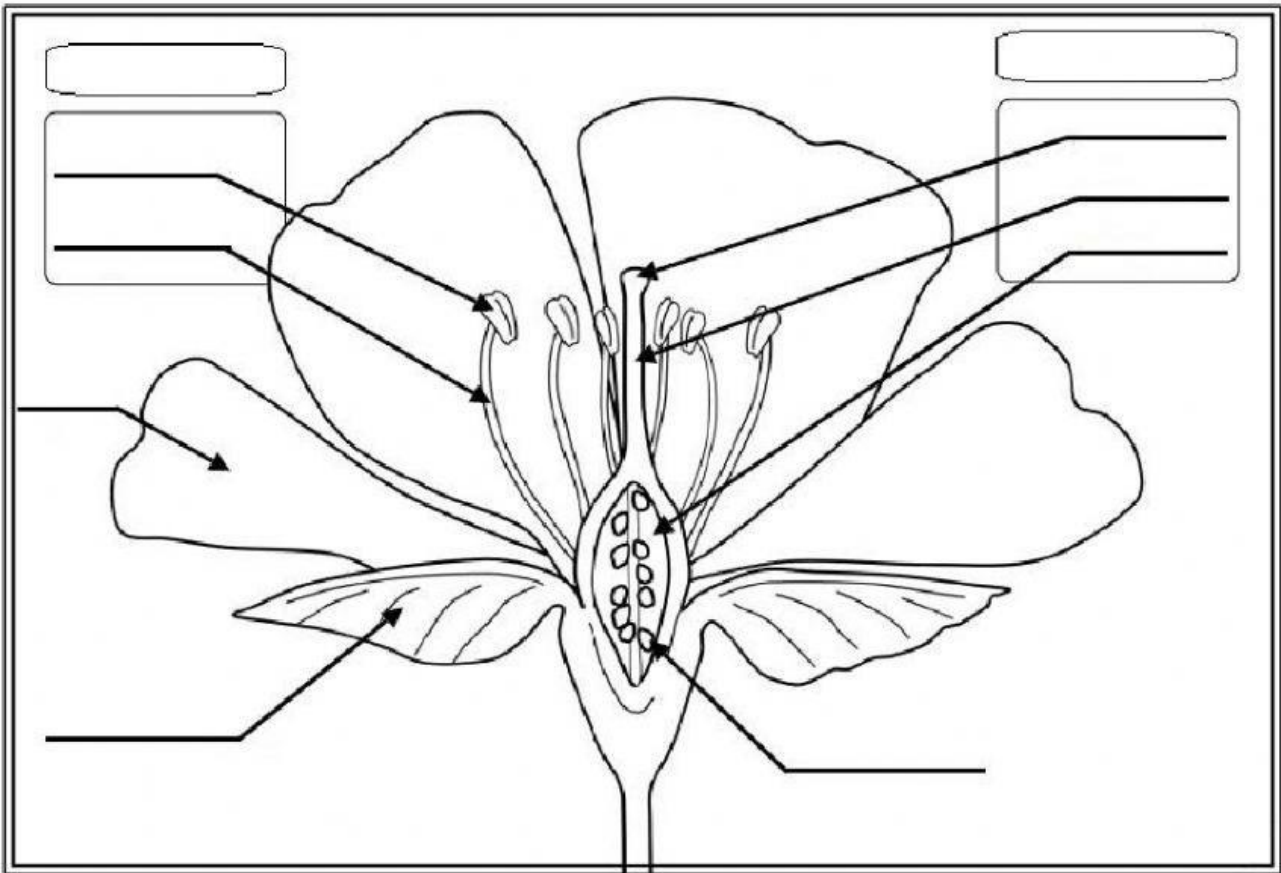


PARTS OF A FLOWER.



NUMBER THE PARTS OF THE FLOWER.

1. Ovules produce seeds.
2. Petals are colourful and beautiful. They attract insects or other animals.
3. Pollen sticks to the stigma.
4. Sepals are the outer part of the flower. They protect the flower bud.
5. The anther makes and stores pollen.
6. The filament supports the anther.
7. The ovary contains egg cells or ovules.
8. The pistil is the female part of the flower.
9. The stamen is the male part of the flower.
10. The style connects the stigma and the ovary. Pollen travels through here.