

CIAO BIMBI

RICORDATE: la **C** per diventare dura davanti alla **E** e alla **I** ha bisogno di essere aiutata dall'**H**. **CHI** e **CHE** sono suoni **DURI!!!**

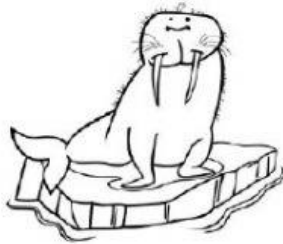
BUON LAVORO!!!!!!

CLICCA per ASCOLTARMI



**Osserva i disegni e completa con CHE e CHI.
Poi pronuncia bene le parole sul microfono.**

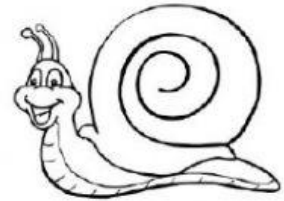
ASCOLTA LE PAROLE



tri co



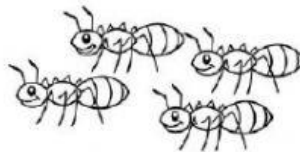
cuc aio



. . . . occiola



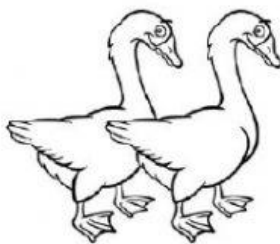
. . . . ave



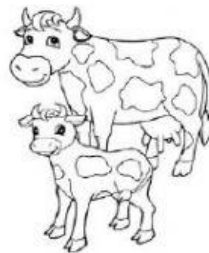
formi



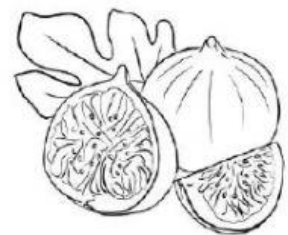
formi ere



o



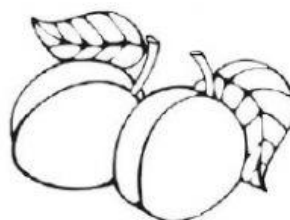
muc



fi



tac no



albicoc



zuc ro