

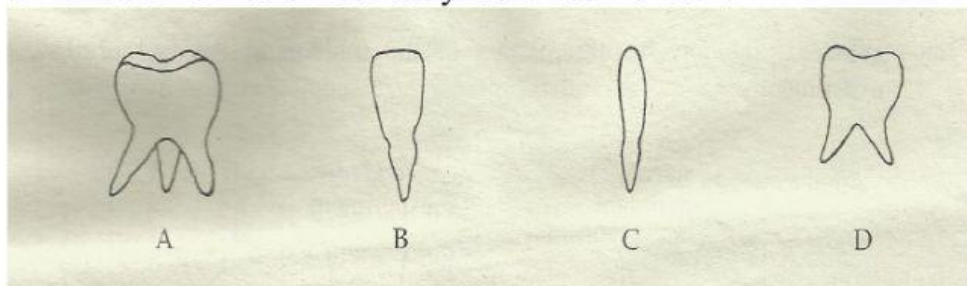
# HEALTH SCIENCE GRADE 9

## MULTIPLE CHOICE UNIT QUIZ

NAME: \_\_\_\_\_ GRADE: \_\_\_\_\_ DATE: \_\_\_\_\_

1. Which line diagram correctly shows the order in which the following process take place?  
  
A    Digestion → Ingestion → Egestion  
B    Digestion → Egestion → Ingestion  
C    Egestion → Digestion → Ingestion  
D    Ingestion → Digestion → Egestion
  
2. Human normally has two sets of teeth, if a person gets all of his first set of teeth and then eventually gets all of the second set of teeth, what is the total number of teeth he would have had in his lifetime?  
  
A    12  
B    20  
C    32  
D    52
  
3. Which terms correctly identify the intake of food and its location?  
A    assimilation, liver  
B    digestion , stomach  
C    egestion, anus  
D    ingestion, mouth
  
4. What is the hardest material in the human body?  
A.    calcium  
B.    cementum  
C.    enamel  
D.    pulp

5. The diagram below represents the teeth in the human lower jaw. Which statement below correctly identifies the teeth?

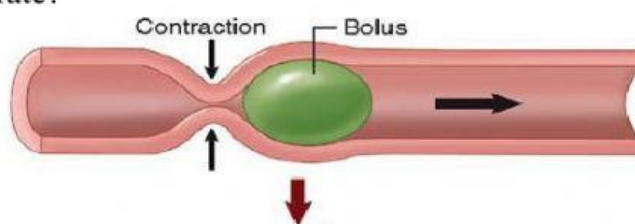


- A. A is a canine, B is an incisor, D is a molar, C is a premolar  
 B. A is an incisor, D is a molar, B is a premolar, C is a canine  
 C. A is a molar, D is a premolar, C is a canine, B is an incisor  
 D. C is a premolar, A is a canine, B is an incisor, D is a molar
6. Which row in this table correctly describes how the different teeth are used?

	<b>Incisors</b>	<b>Canines</b>	<b>Premolars</b>	<b>Molars</b>
A	chewing	biting	tearing	biting
B	biting	tearing	chewing	chewing
C	tearing	biting	chewing	tearing
D	chewing	tearing	biting	tearing

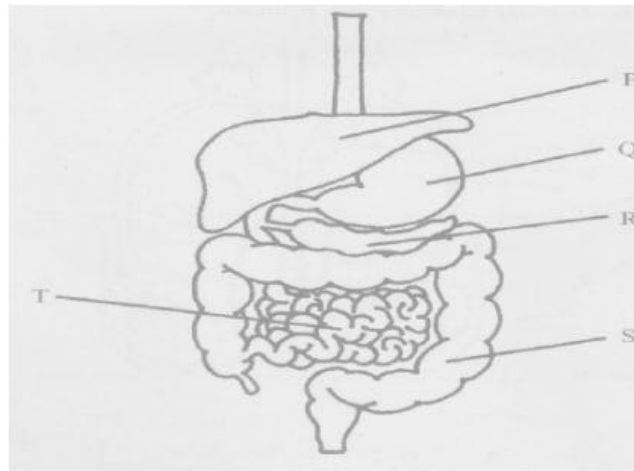
7. What process does this diagram illustrate?

- A. Circulation  
 B. Digestion  
 C. Metabolism  
 D. Peristalsis



8. Which of these flow diagrams shows the correct order in which food moves through the alimentary canal?
- A. Mouth → esophagus → stomach → small intestine → large intestine  
 B. Mouth → esophagus → stomach → large intestine → small intestine  
 C. Mouth → large intestine → small intestine → stomach → esophagus  
 D. Mouth → small intestine → large intestine → stomach → esophagus

9. Which arrow is pointing to the part of the diagram where bile is produced?



- A. P
- B. Q
- C. R
- D. S

10. Which is a daily oral hygiene practice used to keep the teeth healthy?

- A. Regular visits to the doctor
- B. Getting regular eye examinations
- C. Brushing and flossing the teeth before bedtime and morning
- D. Shampooing and rinsing the hair while showering