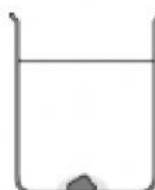


1 Match the sentence starters, middles and endings. Draw *eight* lines.

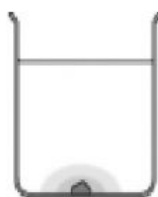
| | | |
|-------------------------|---------------------|---|
| Diffusion ... | ... in a liquid ... | ... occurs faster than in a liquid. |
| The particle theory ... | ... occurs when ... | ... are closer together than in a gas. |
| Diffusion | ... in a gas ... | ... for explaining the properties of matter. |
| Particles ... | ... is useful ... | ... particles of one substance spread out and mix with another. |

2 The diagrams below show what happens when a coloured crystal is dropped into a beaker of water. Complete the sentences, beside each diagram, to explain what is happening.

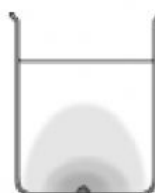
a The coloured crystal is placed in a beaker of _____.



b The colour starts to spread as the crystal starts to _____.



c The colour _____ throughout the beaker of water.



d The particles of water and the dark crystal are moving all the time and mix together.

This is called _____.

