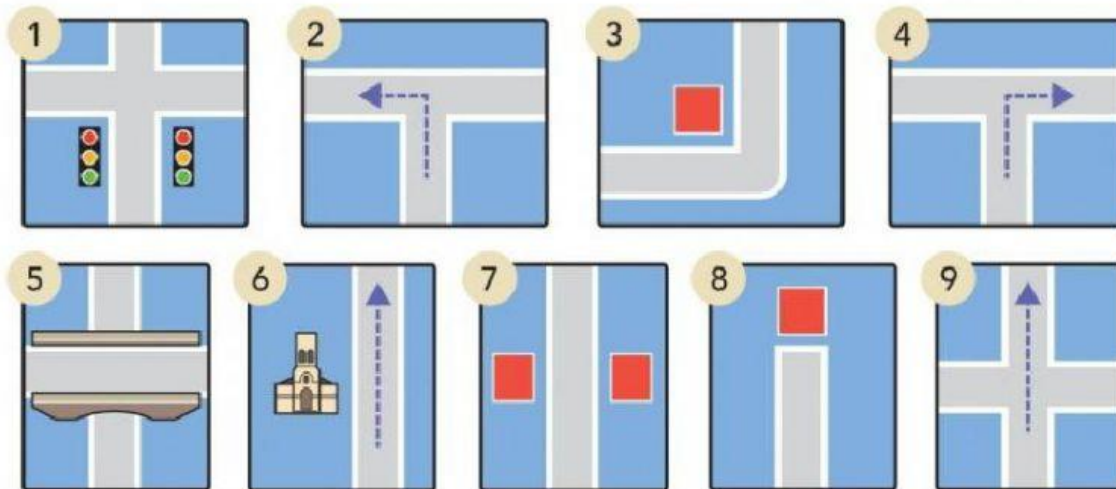


2 VOCABULARY directions

a Match the phrases and pictures.



- on the corner /'kɔːnə/
- at the traffic lights /'træfɪk laɪts/
- a bridge /brɪdʒ/
- opposite /'ɒpəzɪt/

- turn left /tɜːn left/
- turn right /tɜːn raɪt/
- go straight on /streɪt/
- go past the church /pɑːst/
- at the end of the street