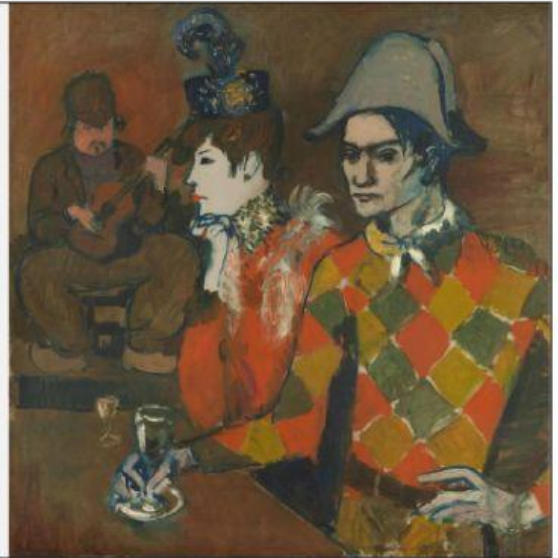


In this section, you are going to hear a museum guide describing a Picasso painting called *At the Lapin Agile*.

- Your task is to complete the sentences with the exact words you hear in the text.
- Write one word in each gap.

Gandalf's Gallery
<https://www.flickr.com/photos/gandalfsgallery/6297803355>
CC BY-NC-SA 2.0



✓ The painting is directly behind the visitors in the centre of the wall.

1. This sombre and somewhat _____ picture, *At the Lapin Agile*, was painted in _____.
2. Picasso gave the painting to the _____ of the _____.
3. For years, this was the only work by Picasso on _____ in Paris.
4. The Harlequin _____ has a brooding and _____ expression.
5. Germaine Pichot was the wife of a _____.
6. During a luncheon party in a café, Casagemas drew a _____ and _____ Germaine and himself.
7. Germaine was only _____ but Casagemas _____.
8. On the one hand, by dissociating himself from the scene, Picasso becomes a _____ to the unhappy love affair.
9. On the other hand, Picasso is also a participant in the loneliness and _____ so powerfully _____ in this painting.
10. You can understand the story even without _____ the _____ of the characters.