

WRITE THE PARTS OF THE FLOWER

STAMEN

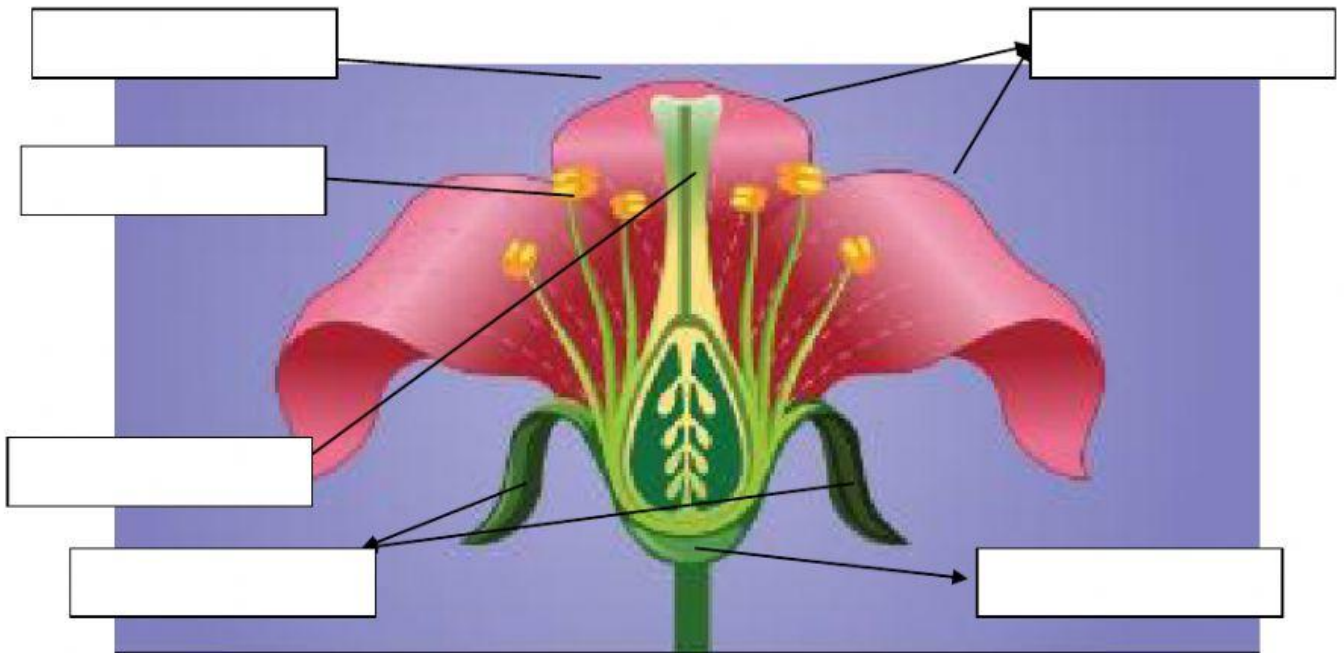
COROLLA

PETAL

CALYX

SEPALS

PISTIL



COMPLETE THE SENTENCES WITH THE PARTS OF THE FLOWER

SEPAL

CALYX

STAMEN

COROLLA

PISTIL

1. _____ and _____ : reproductive part of the plant.
2. _____ : Leaf at the base of the flower.
3. _____ : Colourful part of the flower.
4. _____ : Set of leaves at the base of the flower.