

Recycling and Waste Management in the UK



These items cannot be recycled. They go in black bin bags and then in a household waste wheelie bin. The waste or general refuse goes to **landfill**. What is a landfill site?



Packington Landfill in the 80s.

Watch this video to find out more about landfill sites.

(SITA site Northhamptonshire)

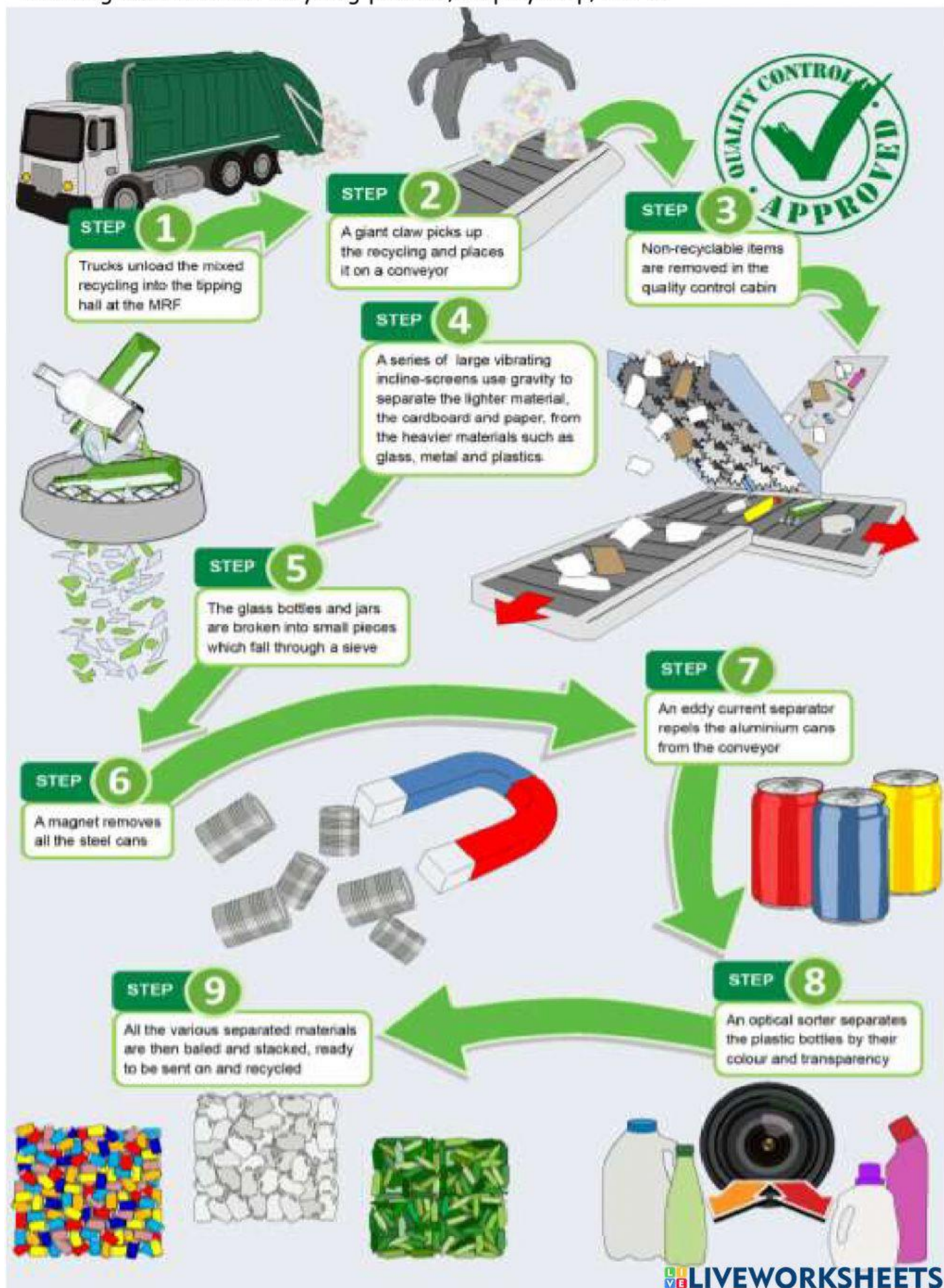
<https://youtu.be/Wny6p690mZU?t=6>



When we **recycle**, where does the plastic, glass and paper go to?

<https://www.youtube.com/watch?v=uPOgeR9AGlg>

This diagram shows the recycling process, step by step, 1 to 9.



Writing task:

"Recycling plastic, glass and paper is better than putting it into the landfill sites. We should reuse resources not waste them."

Do you agree with this statement? Write 50 words or more about your views and describe your experience of recycling at home.

- Use correct punctuation
- Use paragraphs
- Proofread at the end

This film shows how The University of Birmingham is preparing new technology to create cleaner energy from waste in the future. <https://youtu.be/TzGc5TSEDgg>

A story about 3 plastic bottles: https://youtu.be/_6xINyWPpB8?t=6