

RA

R



A



RE

R



E



RI

R



I



RO

R



O



RU

R



U



VAMOS JUNTAR A CONSOANTE R COM AS VOGAIS E FORMAR SÍLABAS?

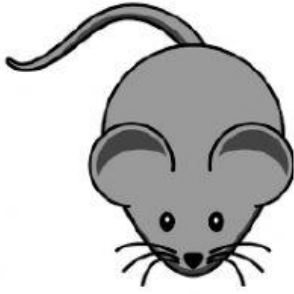
Diagram illustrating the formation of syllables by combining the consonant R with the vowels A, E, I, O, and U. The robot is labeled ROBÔ.



VAMOS LIGAR AS IMAGENS ATÉ OS SEUS NOMES



RATO



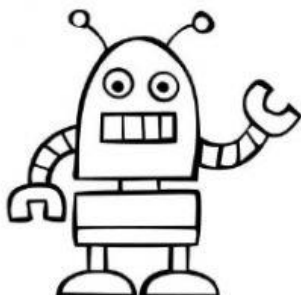
RUBI



RIFA

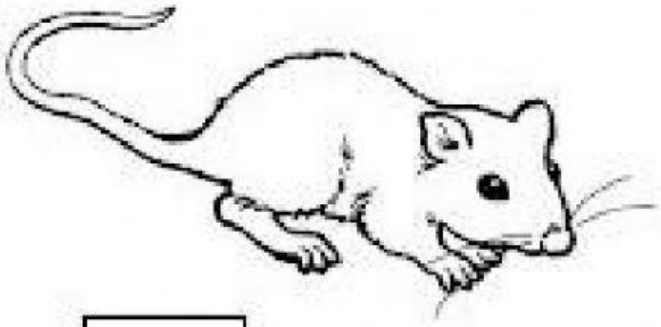


ROBÔ



REDE

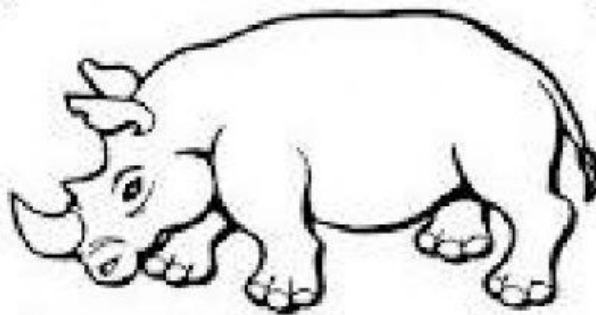
VAMOS COMPLETAR AS PALAVRAS COM A PRIMEIRA SÍLABA.



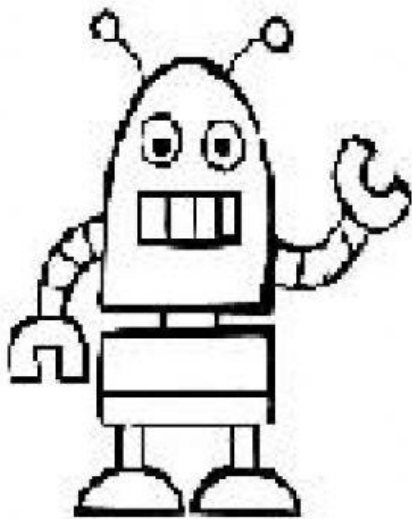
TO



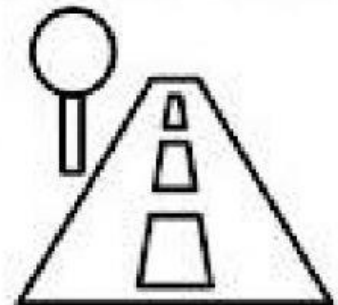
DE



NOCERONTE



BÔ



A