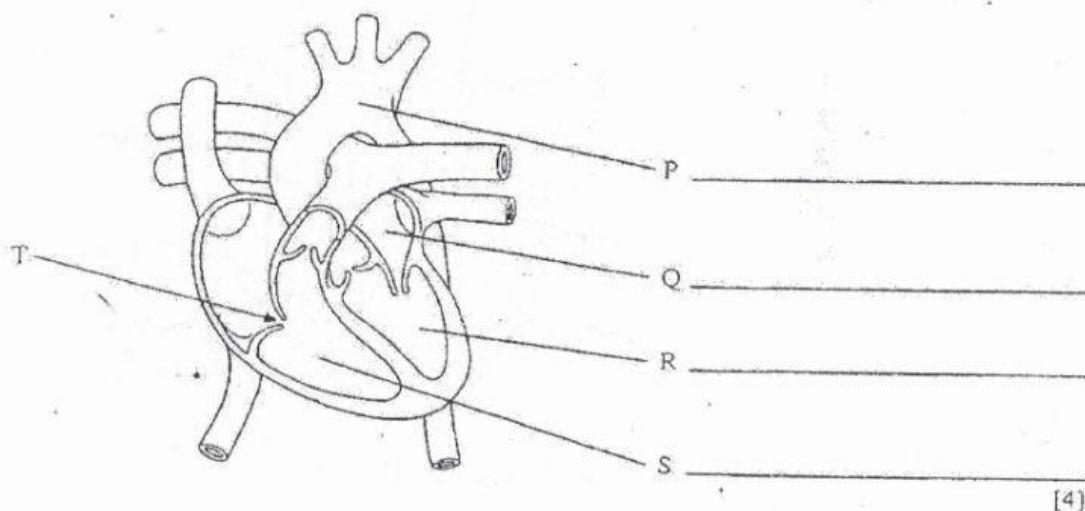


This diagram represents the human heart, seen from the front and cut in half.

- (a) Write the names of the parts of the diagram labelled P, Q, R and S.



- (b) What is the function of the part labelled T on the diagram? _____

 [1]
- (c) Describe one way that the blood in R is different from the blood in S. _____

 [1]
- (d) The heart pumps both oxygenated and deoxygenated blood.
- (i) Where does the blood become oxygenated? _____
- (ii) Where does the blood become deoxygenated? _____
 [2]
- (e) (i) What kind of blood vessels carry blood away from the heart? _____
- (ii) What kind of blood vessels carry blood to the heart? _____
 [2]

Total Marks [10]