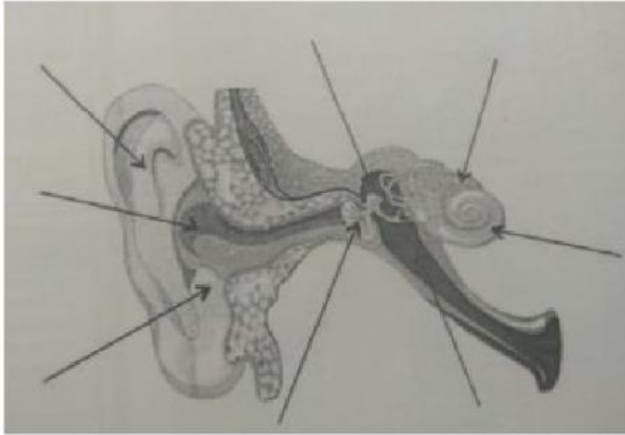


Label the parts of the ear!



- | | |
|---------------|---|
| 1. Pinna | a. A structure consisting of three bones |
| 2. Cochlea | b. The outer visible part of ear, which help in funneling sound waves inside the ear. |
| 3. Ear drum | c. The passage from where sound waves pass through and reach the ear drum. |
| 4. Middle ear | d. The part that converts sound waves in signals for the brain. |
| 5. Ear canal | e. A thin that vibrates on receiving sound |

1. What is a to-and-fro movement about a fixed position called?

a. Sound	b. Vibration	c. Vacuum	d. Frequency
----------	--------------	-----------	--------------
2. Through which of the following can sound not travel?

a. Solids	b. Liquids	c. Gases	d. Vacuum
-----------	------------	----------	-----------
3. Which of the following is the unit of intensity of sound?

a. Hertz	b. Second	c. Decibel	d. Centimetre
----------	-----------	------------	---------------
4. Which of the following is the degree of highness or lowness of sound?

a. Amplitude	b. Echo	c. Pitch	d. Compression
--------------	---------	----------	----------------
5. This is a thin layer-like structure in the ear that vibrates on receiving sounds.

a. Cochlea	b. Eardrum	c. Pinna	d. Ear canal
------------	------------	----------	--------------
6. This is the visible part of the ear.

a. Pinna	b. Malleus	c. Incus	d. Stapes
----------	------------	----------	-----------

