

Prepositions of place

Look at the pictures and choose the correct preposition of place



Where is the bird?

The bird is _____ the house



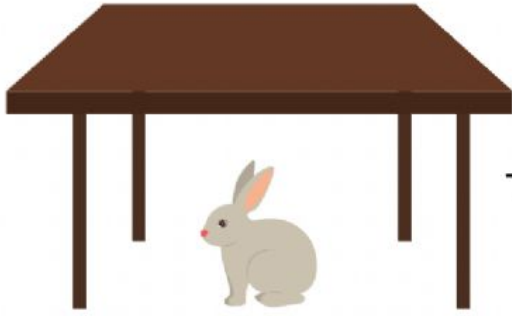
Where is the mouse?

The mouse is _____ the stove



Where is the cat?

The cat is _____ the bed



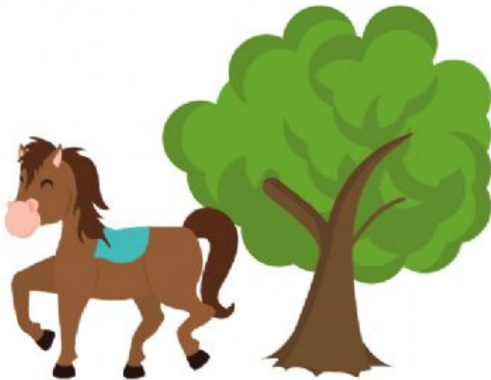
Where is the rabbit?

The rabbit is _____ the table



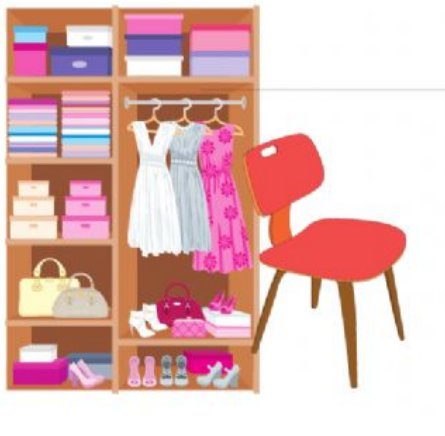
Where is the lamp?

The lamp is _____
the armchair



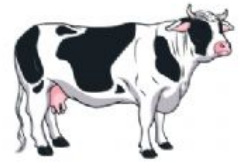
Where is the horse?

The horse is _____
the tree



Where is the chair?

The chair is _____
the wardrobe



Where is the cow?

The cow is _____ the garden.