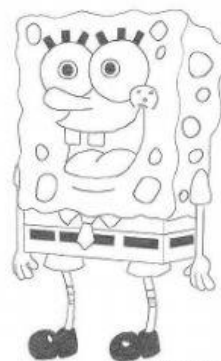


**LS3 Quiz 2 Review**

Use this table to answer the questions that follow.

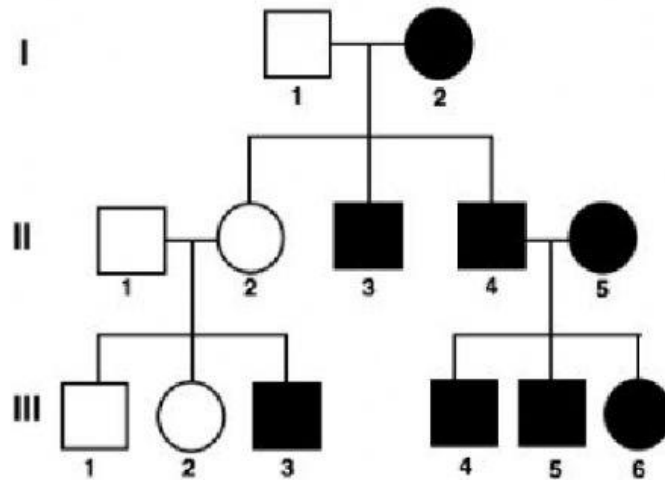
**CHART #1**

Trait	Dominant Gene	Recessive gene
Body Shape	Squarepants (S)	Roundpants (s)
Body Color	Yellow (Y)	Blue (y)
Eye shape	Round (R)	Oval (r)
Nose style	Long (L)	Stubby (l)

Your Drawing Lessons . com

- Use the information in the table to write the phenotype for each item.
  - LL \_\_\_\_\_
  - Yy \_\_\_\_\_
  - Ss \_\_\_\_\_
  - rr \_\_\_\_\_
- Use the information in chart #1 to write the genotype (**or genotypes**) for each trait below.
  - Yellow body: \_\_\_\_\_
  - Square pants: \_\_\_\_\_
  - Stubby nose: \_\_\_\_\_
  - Blue body color: \_\_\_\_\_
- One of Spongebob's cousins, SpongeBilly, recently met a cute Squarepants girl named SpongeGerty at a local dance and fell in love. If SpongeGerty's father is heterozygous squarepants and her mother is a roundpants, what is her genotype? Fill in the Punnett square to show the possibilities. Based on those results, what would Gerty's genotype have to be? \_\_\_\_\_


4. Determine the genotypes for each individual in the pedigree. Then use the pedigree chart to answer the following questions.



5. \_\_\_\_ In the chart, a blank square or circle indicates that the person
- Does have a certain trait
  - Does not have a certain trait
  - Might have a certain trait
6. \_\_\_\_ In the chart, how many females show the trait (are affected)?
- 2
  - 3
  - 5
  - 7
7. \_\_\_\_ What is the genotype for individual II-2?
- Heterozygous
  - Homozygous dominant
  - Homozygous recessive
  - We can't tell
8. \_\_\_\_ How many children are in the second generation?
- 2
  - 3
  - 5
  - 6