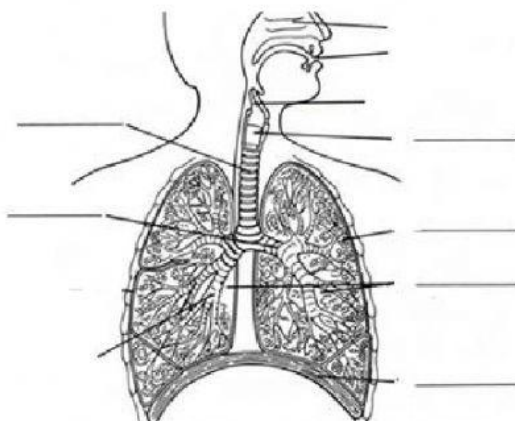


The Respiratory System

1) Identify these parts of the respiratory system

- a- The tube that connects the throat and the bronchial tubes: _____
- b- The grape-like clusters of air sacs within the lungs: _____
- c- The large band of muscle that controls the size of the chest cavity: _____
- d- The two large respiratory organs: _____
- e- The part of the respiratory system that helps us to speak: _____
- f- The two branches of the windpipe: _____

2) Label the organs in this picture



3) The following diagram shows an alveolus of a human lung and its surrounding capillary

- a- Name the gases
Gas A :
Gas B:
- b- For which process do the cells need a constant supply of gas A?

