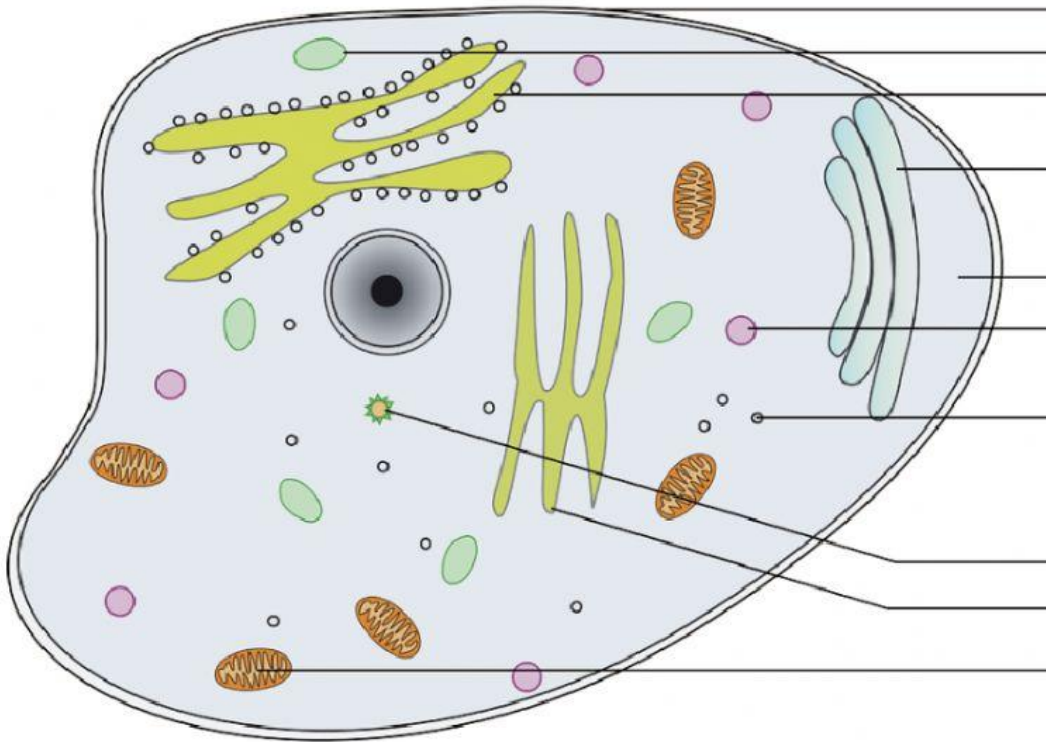




Name: _____ Class: _____

Animal cell

Label the parts of the animal cell below.



Word bank

cell membrane	golgi apparatus	rough endoplasmic reticulum	vacuole
cytoplasm	lysosome	centrosome	ribosome
Mitochondrion	smooth endoplasmic reticulum		

Name : _____

Cell Facts

Fill in the blanks.

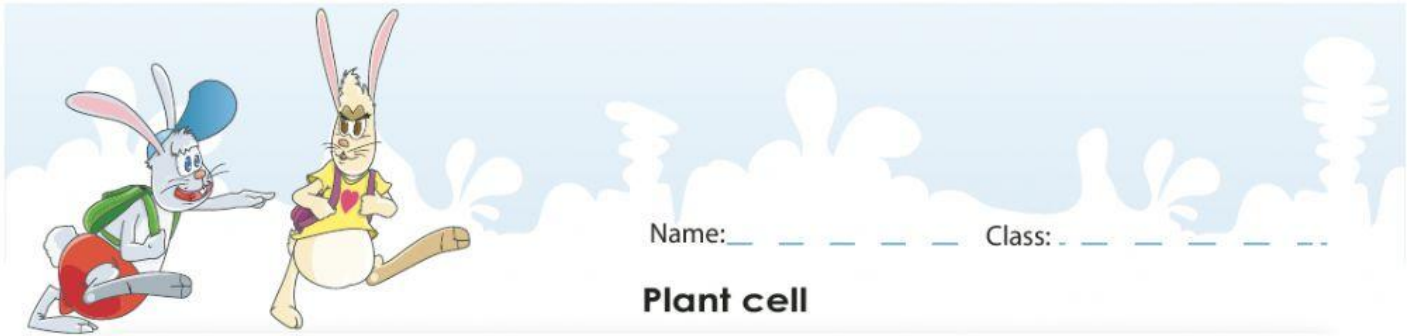
- 1) _____ is the basic structural, functional and biological unit of life.
- 2) Cell was discovered by _____.
- 3) Organisms can be classified as _____ and _____.
- 4) _____ is the study of cell structure and function.
- 5) Single-celled organisms are called _____.
- 6) Chloroplast and chromoplast are types of _____.
- 7) _____ and _____ are the two main types of cells.
- 8) Cell membrane is also known as the _____.
- 9) _____ includes the cytoplasm and the nucleus.
- 10) _____ acts like the skeleton and muscles of the cell.
- 11) Cells contain a number of functional structures called _____.
- 12) Rough ER and smooth ER are the two types of _____.
- 13) We cannot see most cells without the aid of a _____.
- 14) _____ are also known as the solar panels.
- 15) Cells group together to form _____ and tissues group together to form _____.

Name : _____

Parts of a Cell

Match each part of the cell to its description.

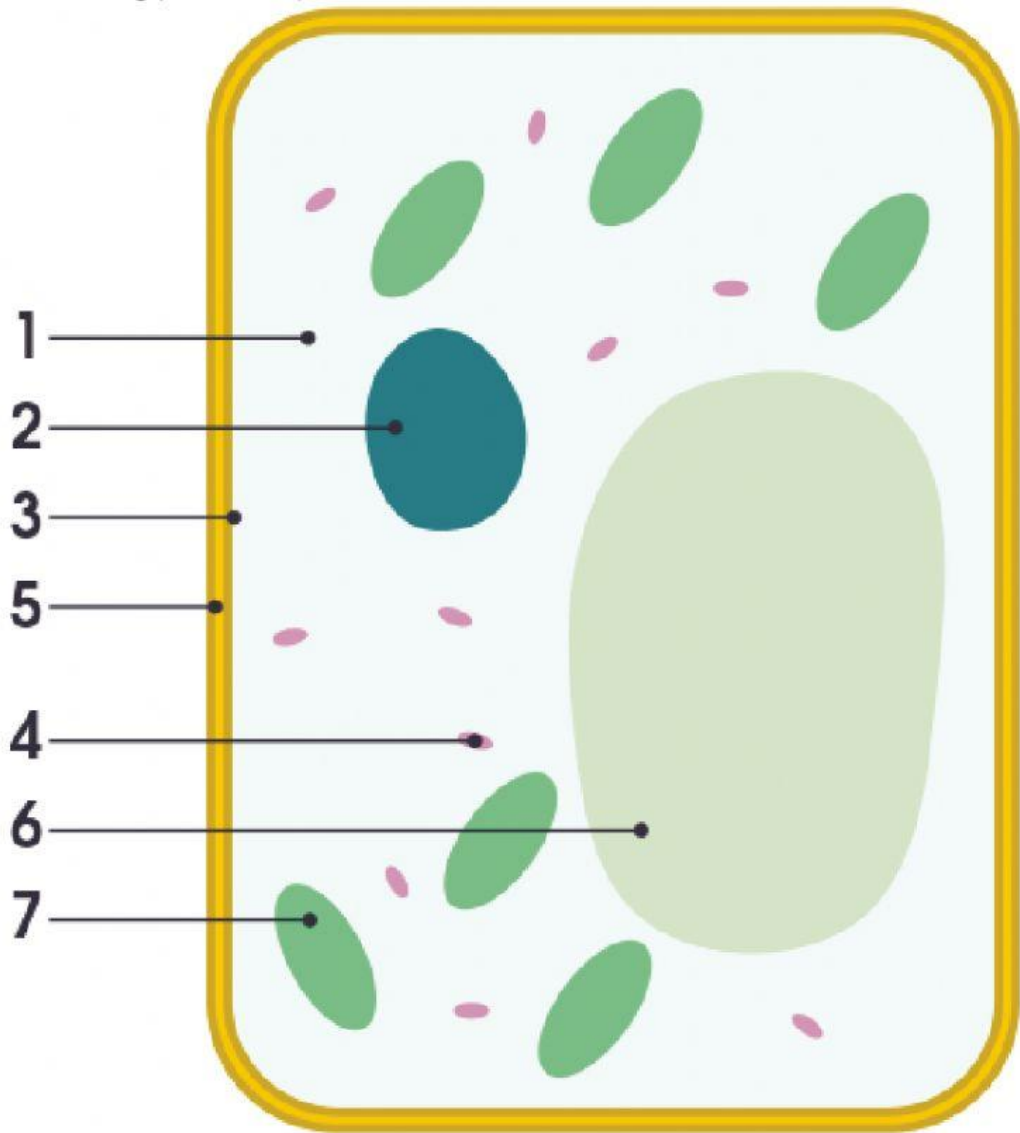
Lysosome	is the power house of the cell
Nucleus	is the post-office of the cell
Golgi apparatus	is the garbage disposal center of the cell
Vacuole	is the construction site of proteins
Mitochondria	is the control center or brain of the cell
Cell membrane	is a type of plastid that contains chlorophyll
Ribosome	is the storage tank of the cell
Chloroplast	is the security guard of the cell



Name: _____ Class: _____

Plant cell

Label the following parts of a plant cell.



cytoplasm chloroplast nucleus permanent vacuole cell membrane
mitochondrion cellulose cell wall

Biology, Cells

I	K	Y	S	E	T	O	Y	R	A	K	O	R	P
L	P	M	C	H	L	O	R	O	P	L	A	S	T
R	O	S	M	S	E	M	O	S	O	B	I	R	L
L	T	C	E	L	L	M	E	M	B	R	A	N	E
L	Y	S	O	S	O	M	E	S	L	C	E	L	C
V	M	S	A	L	P	O	T	Y	C	A	O	S	E
N	I	T	A	M	O	R	H	C	O	M	C	S	E
L	O	B	C	I	L	I	A	M	Y	C	Y	O	U
I	L	M	I	T	O	C	H	O	N	D	R	I	A
S	L	C	E	L	L	W	A	L	L	A	E	R	C
I	E	L	O	U	C	A	V	T	S	O	A	O	C
M	M	T	N	S	E	T	O	Y	R	A	K	U	E
C	E	N	T	R	I	O	L	E	S	C	T	A	E
O	O	R	U	R	S	U	L	O	E	L	C	U	N

CHROMATIN
 NUCLEOLUS
 PROKARYOTES
 CHLOROPLAST
 CELL WALL
 CELL MEMBRANE
 EUKARYOTES
 MITOCHONDRIA
 CILIA
 VACUOLE
 RIBOSOMES
 CENTRIOLES
 CYTOPLASM
 LYSOSOMES

Play this puzzle online at : <https://thewordsearch.com/puzzle/3188/>