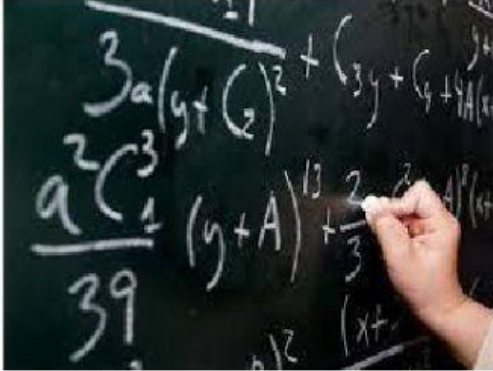


Use and non-use of the passive

Complete the sentences from the listening with the active or the passive form of the verbs in brackets.



1. This question _____ (design) to test logic and mathematical skills, but the mathematical skills that _____ (require) are not very great.



2. The average number of items that people _____ (remember) was eight.
3. The best way to remember is if you _____ (group) all the similar items together.

4. The shape has to _____ (rotate) in the mind's eye.

5. Visual skills cannot _____ (teach easily)





6. According to experts, you _____
(should discuss) the situation with
the child.
7. Children certainly _____
(should not bribe) with biscuits.



8. It _____ (show) in
studies that if you think you are very
creative, then you are very creative.
9. They _____ (say)
that the strongest power we possess is
self-belief.

Now listen and check your answers.

Look again at the sentences and find an example of ...

■ a modal passive

(modal+ be + past participle)

■ a passive infinitive

((to) be+ past participle)