

ELECTRICITY

1. All matter is made up of microscopic...

☐ electrons.

☐ atoms.

2. An atom is made up of electrons and...

☐ nucleus.

☐ positive charge.

3. The nucleus of an atom has protons and...

☐ neutrons.

☐ electrons.

4. The electrons revolve around the...

☐ protons.

☐ nucleus.

5. The electric charge of protons is...

☐ negative.

☐ positive.

6. The electric charge of electrons is...

☐ negative.

☐ positive.

7. Electricity happens when an electron moves from one...

☐ proton to another.

☐ atom to another.

Click on the words related to electric current.

flow

plug

static electricity

socket

insulator

wire

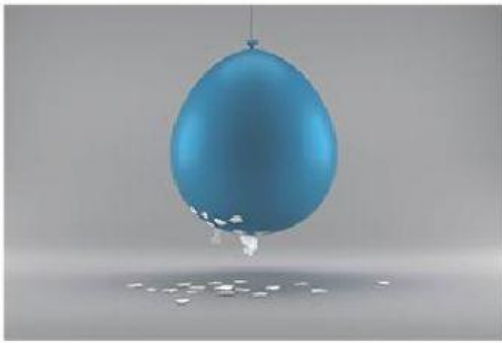
electrons

wireless

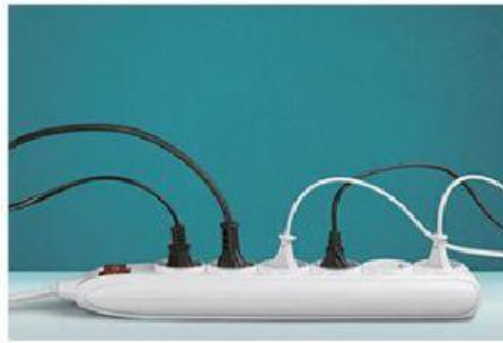
atoms

conductor

Look at the photos below and identify the form of electricity they show.



electricity



electrical

Complete the descriptions.



Both balloons are electrically neutral. They have the same number of _____ and _____.

When rubbed, the balloons are electrically charged. They gain electrons. So they have a _____ charge.

Both balloons have the same charge. Objects with the same charge _____ each other.



The balloon is electrically _____.

After rubbing the balloon against the girl's hair, electrons move from the hair to the balloon. The balloon is _____ charged. Her hair is _____ charged.

The balloon and the girl's hair have different charges: they _____ each other.

Match the parts of the circuit to the definitions.

It is the part of the circuit which provides energy.

☐ switch

It is a device that opens or closes the circuit.

☐ conductor

They conduct electricity and connect all the parts.

☐ load

It transforms electricity into movement, heat or light.

☐ power source

Electric circuits

What symbols do we use to represent electric circuits?





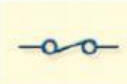
battery

switch on

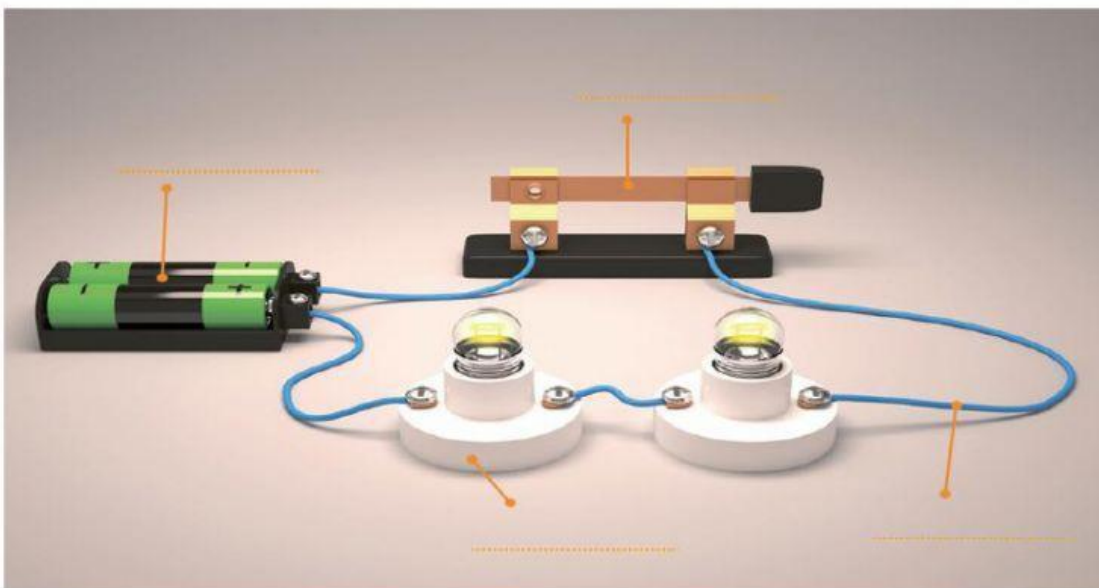
light bulb or lamp

wire

switch off

				
<input type="text"/>	<input type="text"/>	<input type="text"/>	<input type="text"/>	<input type="text"/>

What are the main parts of a closed electrical circuit? Label its parts.



How electricity is used

Are these sentences true or false?

1. Electricity is generated in power stations.

☐ True ☐ False

2. Electricity travels along signals to our homes.

☐ True ☐ False

3. Cables that carry electricity are safe.

☐ True ☐ False

4. Pylons keep cables away from people and things on the ground.

☐ True ☐ False

5. There is a fuse box in our home, where electricity enters.

☐ True ☐ False

6. From the fuse box, electricity travels through wires to electrical devices.

☐ True ☐ False

How electricity is used

Complete these sentences.

fire

candles

cart

power stations

fuse box

wires

cables

switches

Pylons

safe

by hand

1. Electricity is generated in . From there, the electricity travels along long to our homes.
2. help keep the cables away from people and things on the ground. At the place where electricity enters our homes there is a . This helps make the electricity to use.
3. From the fuse box, electricity travels through to all the light and sockets in our home.
4. Before scientists discovered how to use electricity, people used or gas to light their homes. They cooked and heated water over a . They washed their clothes and travelled by horse and .

Thomas Edison

Choose the correct answer.

1. Thomas Edison invented this machines to record sound.

- ☐ phonograph
- ☐ kinetoscope
- ☐ light bulb

2. He wasn't the first person to invent this, but he was the first one to invent the same invention that produced light for a long period of time.

- ☐ phonograph
- ☐ kinetoscope
- ☐ light bulb

3. It was the first successful invention of Thomas Edison.

- ☐ phonograph
- ☐ kinetoscope
- ☐ light bulb

4. It was the first motion camera, invented by Thomas Edison.

- ☐ phonograph
- ☐ kinetoscope
- ☐ light bulb

5. Thomas Edison invented power stations that supplied electricity needed for this invention.

- ☐ phonograph
- ☐ kinetoscope
- ☐ light bulb

6. Only one person could watch the motion pictures at a time in this invention.

- ☐ phonograph
- ☐ kinetoscope
- ☐ light bulb