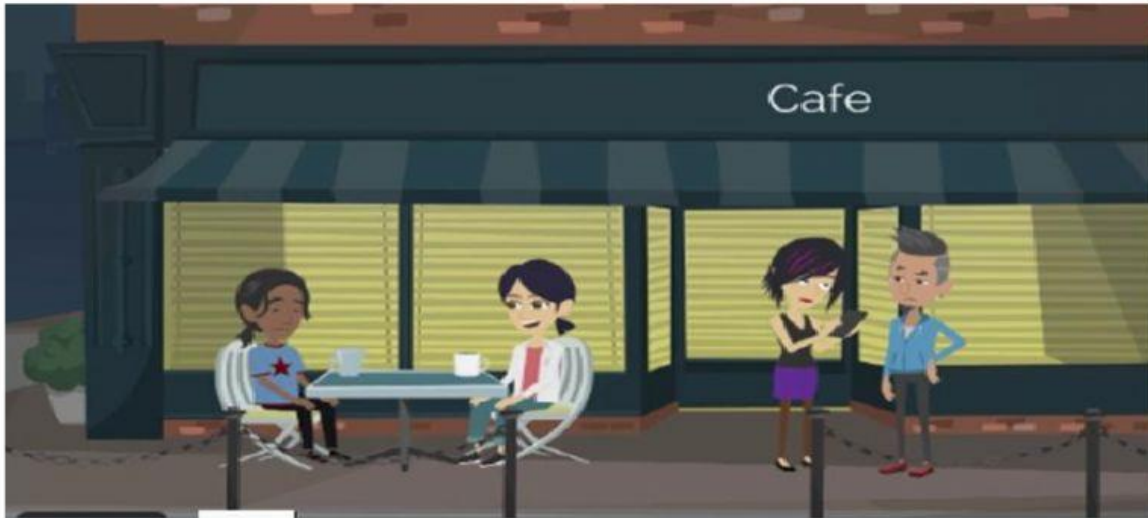


Complete with the correct place where does each speakers go ?



- A. The speaker gives directions to the _____
- B. The speaker gives directions to the _____
- C. The speaker gives directions to the _____
- D. The speaker gives directions to the _____

Listen the followint conversation and choose the correct answer .



write the letter in the space

1) What kind of company does she work for in Conversation 1?

- a) Clothing
- b) Computers
- c factory

2 what does she do in the company in Conversation 1?

- She is a secretary
- She is a designer
- She is a accountant

3) What does he want to do in Conversation 2?

- a) Pay a bill
- b) Get an ID
- c go to the cinema

4) What do her parents do in Conversation 3?

- a) Make cars
- b) Sell cars
- c sell food

5) Where does she live in Conversation 4?

- a) In a big house
- b) In a small house
- c in a small flat