

READING

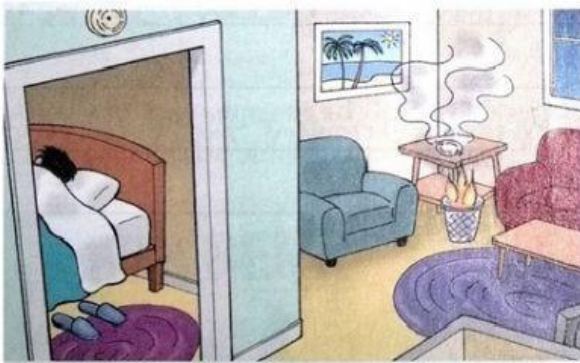
LOOK AT THE PICTURES. COMPLETE THE SENTENCES. USE THE WORDS IN THE BOX

fire

neighbor

smoke

smoke alarm



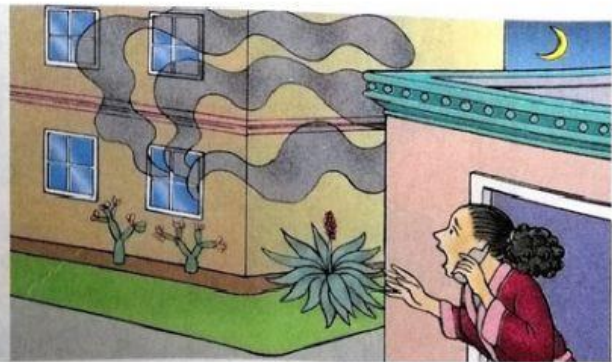
1. There's a _____ in the apartment.



2. There's a lot of _____.



3. The _____ goes off.

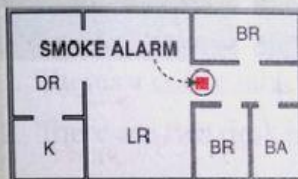


4. A _____ see the smoke and calls 911.

SMOKE ALARMS - A LIFE SAVER!

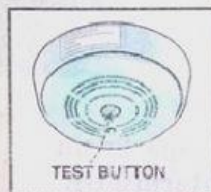
WRITE THE ARTICLE.

Every year in the U.S., about 16,000 people get hurt because of fires in their homes. And about 3,200 people get killed. Smoke alarms can keep you safe.



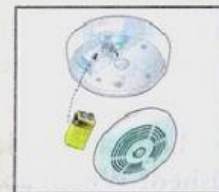
Where should you put your smoke alarms?

Put one smoke alarm near the bedroom area. You can also put smoke alarms in the living room or other rooms. But don't put an alarm in your kitchen. It will go off when you cook!



When should you check the smoke alarms?

Does your smoke alarm work? How do you know? Check the alarm every month. To check an alarm, push the test button and listen for the alarm sound.



When should you change the batteries?

Change the batteries every year. But if your alarm makes a "chirp" sound, put in a new battery right away. Your smoke alarms can't help you if they don't work!

A. WHAT IS THE MAIN IDEA? COMPLETE THE SENTENCE.

_____ can keep you safe from fires.

B. READ THE SENTENCES. CHOOSE THE CORRECT WORDS.

- In the U.S., about 16,000 **get hurt** / **get killed** every year from fires in their homes.
- You should put a smoke alarm near your **kitchen** / **bedroom**.
- Check your smoke alarms every **month** / **year**.
- Change the batteries every **month** / **year**.