

17 READING COMPREHENSION

I'M LONELY, SO LONELY

Read the poem carefully. Look at questions 1, 2, 3, 4, 5, and 6. Read the poem a second time, then answer the questions as best you can.

I'M LONELY, SO LONELY!

Kenn Nesbitt



I'm lonely, so lonely, I'm always alone!
I never get emails, or texts on my phone.

I sit by myself in my room every day,
and wonder why nobody wants to go play.

My classmates avoid me, they never say, "Hi."
They don't even know that I'm a wonderful guy.

And even the strangers I see on the street,
go out of their way to make sure we don't meet.

They jump and they run to get out of my path,
I guess maybe this year I'll take my first bath.

1. What does the word lonely mean?
2. Name **ONE** thing the writer never gets.
3. According to the poem, what does the writer do every day?
4. Choose the correct character for each action.

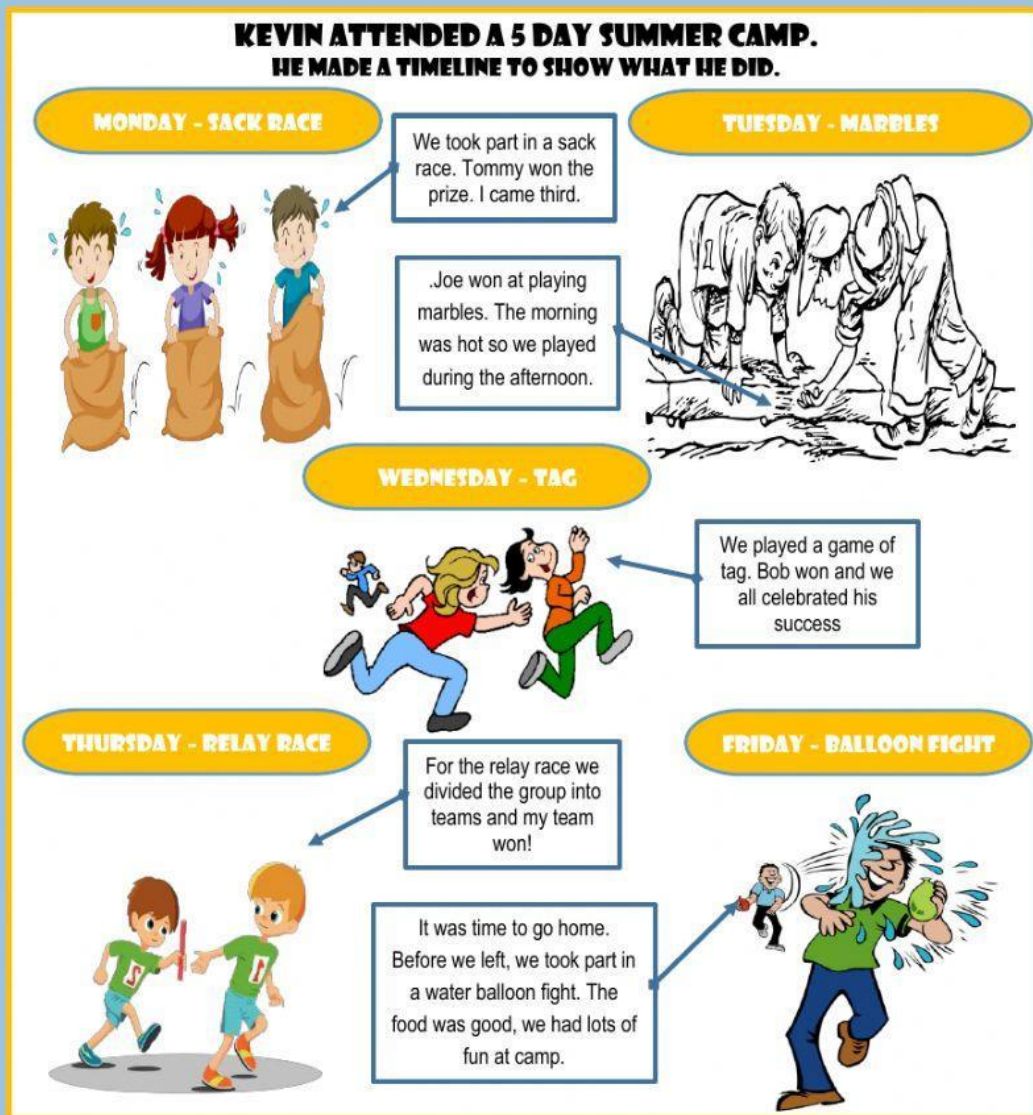
| | | |
|---|-----------|------------|
| a. They go out of their way not to meet the author. | Strangers | Classmates |
| b. They never say "hi" to the author. | Strangers | Classmates |
| c. They avoid the author. | Strangers | Classmates |
| d. They jump and run to get out of the author's path. | Strangers | Classmates |

Prepared by: Mrs. C. Marguerite Forbes-Moree

5. What does the word avoid mean?

6. According to the poem, why doesn't anyone want to be near the author?

18 KEVIN'S SUMMER CAMP TIMELINE



Prepared by: *Mrs. C. Marguerite Forbes-Moree*

1. Look at the timeline. Which boy came third in the sack race?
2. **"Tommy beat Jack in the sack race to win a trophy."**
In which of the following statements is the word **"beat"** used the same way as it is used in the sentence.
3. Complete the statement to show cause and effect.
"The children played marbles in the afternoon because..."
4. In which activity was the group divided into teams?
5. Using the numbers **1, 2, 3,** and **4** order the activities below to show when they happened.
_____ the game of tag
_____ the water balloon fight
_____ the sack race
_____ the relay race
6. (a) Based on information provided in the timeline, would Kevin most likely return to summer camp next summer?

YES

NO

- (b) State **ONE** fact from the timeline to support the answer you gave in 6 (a).

Prepared by: *Mrs. C. Marguerite Forbes-Moree*