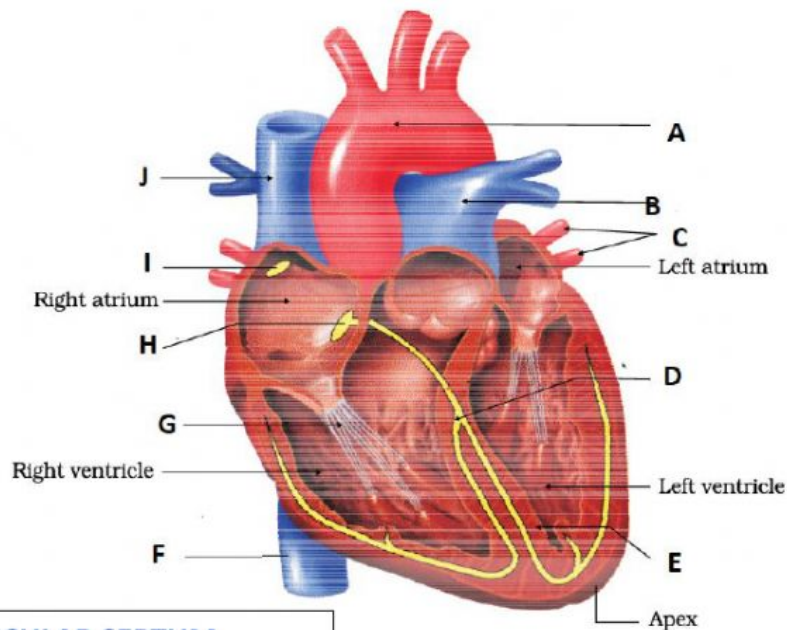


**Senior Secondary Biology****Topic: Human Circulatory System****Human Heart: Label the diagram 1****Drag and Drop Exercise**

Dear Student

You have studied **Structure of Human Heart** in your class. Now you may play this learning game. Drag and drop to Label the Ten (10) parts A-J. Choose from the list the proper names and place against the correct boxes. Enjoy and test yourself. Repeat to secure full marks.

Created by: Dr. Abhijit Saha, Training Associate (Biology), ZIET Bhubaneswar, INDIA

**INTERVENTRICULAR SEPTUM****A-V NODE****S-A NODE****PULMONARY ARTERY****AORTA****SUPERIOR VENACAVA****CHORDAE TENDINAE****PULMONARY VEIN****INFERIOR VENACAVA****BUNDLE OF HIS**

<b>A</b>	<b>1</b>
<b>B</b>	<b>2</b>
<b>C</b>	<b>3</b>
<b>D</b>	<b>4</b>
<b>E</b>	<b>5</b>
<b>F</b>	<b>6</b>
<b>G</b>	<b>7</b>
<b>H</b>	<b>8</b>
<b>I</b>	<b>9</b>
<b>J</b>	<b>10</b>