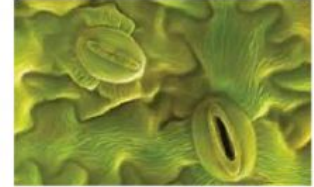


Plant System Interaction Review

Multiple Choice: Select the BEST answer

1. What is the function of stomata *

- A. To let CO₂ in and O₂ out as well as a little water for transpiration
- B. They are guard cells that open and close
- C. They have no function, they just sit there
- D. They watch you tube and exhale CO₂



2. What are the products of photosynthesis *

- A. CO₂ and a little water
- B. O₂ and CO₂
- C. Glucose and CO₂
- D. Glucose and O₂

3. What are the reactants for photosynthesis? *

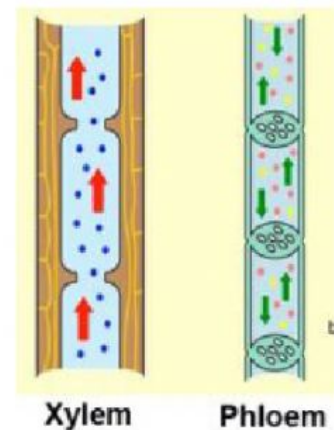
- A. O₂ and Water
- B. Sunlight, glucose, water
- C. Maltodextrose sodium glutamate and CO₂
- D. CO₂, Water, Sunlight

4. Xylem is responsible for transferring _____ *

- A. Sugar from the leaves to the roots
- B. Water and minerals from the roots to the leaves
- C. CO₂ from the stomata of the leaves
- D. O₂ from the stomata of the leaves

5. Phloem is responsible for transferring... *

- A. Sugar from the leaves to the roots
- B. Water and minerals from the roots to the leaves
- C. CO₂ from the stomata of the leaves
- D. O₂ from the stomata of the leaves



6. Geotropism is growth in response to... *

- A. Light
- B. Temperature
- C. Time
- D. Gravity

7. Thigmotropism is growth in response to... *

- A. gravity
- B. chemicals
- C. hormones
- D. touch

8. Which plant hormone is responsible for the ripening of fruit? *

- A. Gibberellin
- B. Absciscic Acid
- C. Auxin
- D. Ethylene

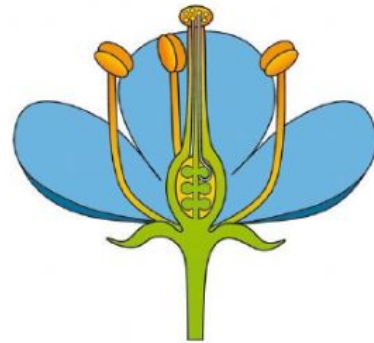


9. The male reproductive part of a flower is called the... *

- A. Pistil
- B. Stamen
- C. Carpel

10. What part of the flower holds the pollen? *

- A. Filament
- B. Anther
- C. Sepal
- D. Stigma



11. What is the female part of the flower called? *

- A. Pistil
- B. Stamen
- C. Anther

12. What part of the female flower swells into fruit? *

- A. stigma
- B. style
- C. Filament
- D. Ovary

13. Buds, flowers, stems, and leaves are all part of which organ system... *

- A. Shoots system
- B. Roots system

14. Xylem and Phloem are vascular organs and are a part of what plant organ system? *

- A. Roots
- B. Shoots

15. Which of the following correctly describes how a plant's vascular tissue functions to provide for its needs? *

- A. Auxin distribution in a plant stem changes in response to exposure to sunlight.
- B. Rhizomes grow underground to allow plants to make new copies of themselves.
- C. Phloem carries the sugars to all parts of the plant for proper growth and energy.
- D. Chloroplasts in the leaves absorb sunlight and use it to manufacture sugar.

16. Stomata open and close in response to - *

- A. water being pumped in and out of guard cells.
- B. crystal formation in the plant due to excess glucose.
- C. the lack of available sunlight during the night.
- D. stimulation by auxins producing rapid growth.

17. Roots of a plant typically grow downward, while shoots grow upward. This is most likely the result of differences in the - *

- A. concentration of auxins in response to gravity.
- B. speed of fluid transport in response to temperature.
- C. percentage of open stomata in response to humidity.
- D. active transport of nutrients in response to light.

18. A piece of a geranium plant is cut and placed in a jar of water and placed in the window. Several weeks later the piece has grown into a new plant. Which of the following is true about the genetic relationship between the first plant and the new one?

- A. The two plants are different genetically.
- B. The two plants are slightly different genetically.
- C. The two plants are genetically identical.
- D. There is no way to know the genetic relationship.

19. Seed dispersal is essential for evolutionary selective advantage because _____

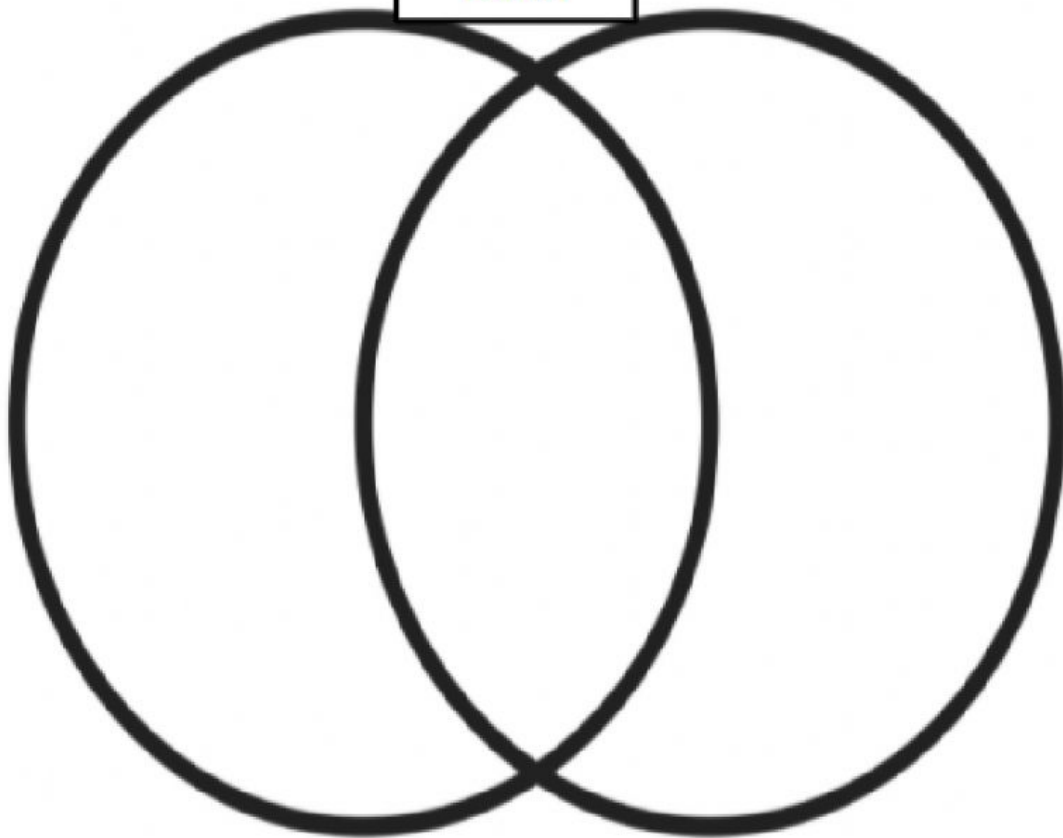
- A. Plants are different genetically and cannot occupy the same land.
- B. Seeds are very diverse and vary greatly in size, shape, and function
- C. Results in higher survival rates for seeds, away from disease, predators, and competition
- D. Seeds germinate and develop into new plants

Sexual vs Asexual Reproduction Venn Diagram

Sexual Reproduction

Asexual Reproduction

Both



45/2015