

DAYS OF THE WEEK

READING COMPREHENSION

QUEST

¡BIENVENIDO, VIAJERO DEL TIEMPO!
HAS ENTRADO EN EL BUCLE TEMPORAL
DE 'THE WEEKLY LOOP'. PARA ESCAPAR
Y DOMINAR EL TIEMPO, DEBES LEER LA
CRÓNICA DE LOS DÍAS Y DESBLOQUEAR
LOS 3 NIVELES DE CONSCIENCIA
LECTORA. ¿TIENES LO NECESARIO
PARA VENCER AL JEFE FINAL (EL
NIVEL CRÍTICO)?

START



THE LORE



There are seven days of the week, or uniquely named 24-hour periods designed to provide scheduling context and make time more easily measurable. Each of these days is identifiable by specific plans, moods, and tones.

Monday is viewed by many to be the "worst" day of the week, as it marks the return to work following the weekend, when most full-time employees are given two days off. Most students attend school in the morning and return home in the afternoon (usually from about eight until three or seven until two), and most workers go to work in the morning and return home in the evening (usually from nine to five or eight to four).

Tuesday is the second day of the week, and is in many ways similar to Monday. Not a whole lot of changes, schedule-wise, between Tuesday and Monday; most individuals go to school or work and return home to watch television, play video games, make plans with friends, spend time with family, read, or engage in a similar leisure-related activity.

Wednesday is the third day of the week, and serves as the "middle" of the work week; some individuals refer to Wednesday as "hump day," as once its workday is complete, employees will have passed the work-week "hump," and will be on the downturn, as only two days on the job will remain in the week.

Thursday is the fourth day of the week, and is viewed favorably by many, as it's rather close to the end of the work week.

Friday is the fifth day of the week, and marks the end of the workweek and school-week for the vast majority of employees and students. By Friday afternoon/evening, most students/workers cannot wait to leave and go home, as they won't have to report back to school/work until Monday.

Saturday is perhaps the most highly regarded day of the week. Because Sunday follows it (and there is presumably no work or school to attend, for most individuals), everyone is free to stay out (or awake) until late at night, having fun with plans or other leisure-related activities. To be sure, Saturday is generally thought of as a day to partake in hobbies that couldn't otherwise be enjoyed during the regular week.

Sunday is the final day of the week, and is used by most as a day of rest. Fewer late-night plans are made on Sundays, compared to Saturdays, as most individuals have to wake up for work or school on Monday morning.



LEVEL 1: THE SEARCHER (NÍVEL LITERAL)

Objetivo: Encontrar las pistas explícitas ocultas en el texto. Al completarlo, desbloqueas el portal.

1. Main Idea Quest (Idea Principal):

According to the text, what is the primary purpose of having seven days in a week?

2. Chrono-Sequence (Secuencias):

Fix the timeline! Order the events by selecting what happens first:

A) People enjoy their hobbies on Saturday.

B) Students and workers go home on Friday afternoon.

C) Individuals rest and make fewer plans on Sunday.

3. The Comparison Match (Por comparación):

Who usually returns home earlier in the afternoon?

*** Full-time workers.**

*** Most students.**

*** Both return at the exact same time.**

4. Cause & Effect Link (Causa o efecto):

According to the text, what is the effect of Sunday being followed by Monday morning?



**LEVEL 2: THE DETECTIVE (NIVEL
INFERENCIAL) ●**

Objetivo: Leer entre líneas. La información está oculta, debes usar tu deducción para obtener las llaves

5. Hidden Behavior (Inferir lo implícito):

Why does the text suggest that people change their behavior on Sunday night compared to Saturday night?

6. Future Predictor (Relaciones complejas - Predicción):

Butterfly Effect: If a school cancels classes for Monday morning, how will students change their plans on Sunday night?

7. Author's Mind (Participación activa):

What was the author's main intention when writing this text?

() A) To convince the reader that working on Mondays is a terrible idea.

() B) To describe the typical weekly routine and emotional rhythm of a common community.

() C) To explain the scientific history behind the creation of the calendar.





LEVEL 3: THE MASTER CRITIC (NIVEL CRÍTICO) ●

Objetivo: El jefe final. Aquí no hay respuestas del todo correctas o incorrectas en el sistema, sino que requiere tu juicio crítico y deconstrucción del texto.

8. Architectural Deconstruction (Estructural):

Why do you think the author chose to structure the text starting on Monday and ending on Sunday, rather than following a traditional calendar that starts on Sunday? How does this affect the reader's understanding?

9. Fact vs. Illusion (Hecho vs. Opinión):

Look at the statement: "Monday is viewed by many to be the 'worst' day of the week." Is this a proven fact for every person, or is it a general opinion? Why?

10. Deep Vision (Significados implícitos):

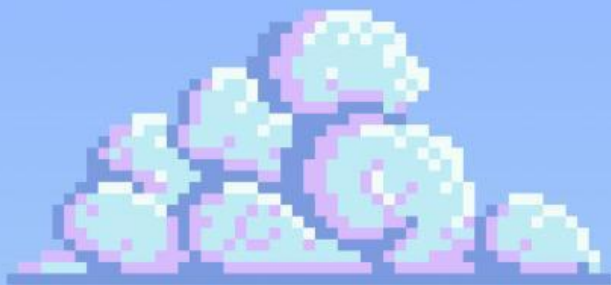
When the author describes Monday as the "worst" day and Saturday as "highly regarded," what is their deep, implicit message about our modern lifestyle?

11. The Ultimate Matrix Trial (Análisis crítico):

The author presents the weekend as the only time for true happiness and hobbies. Critically analyze this perspective: Do you think the author has a balanced view of work and life, or is it too negative about the workweek? Why?

LOADING...





GAME OVER



**THANKS FOR
PLAYING**

