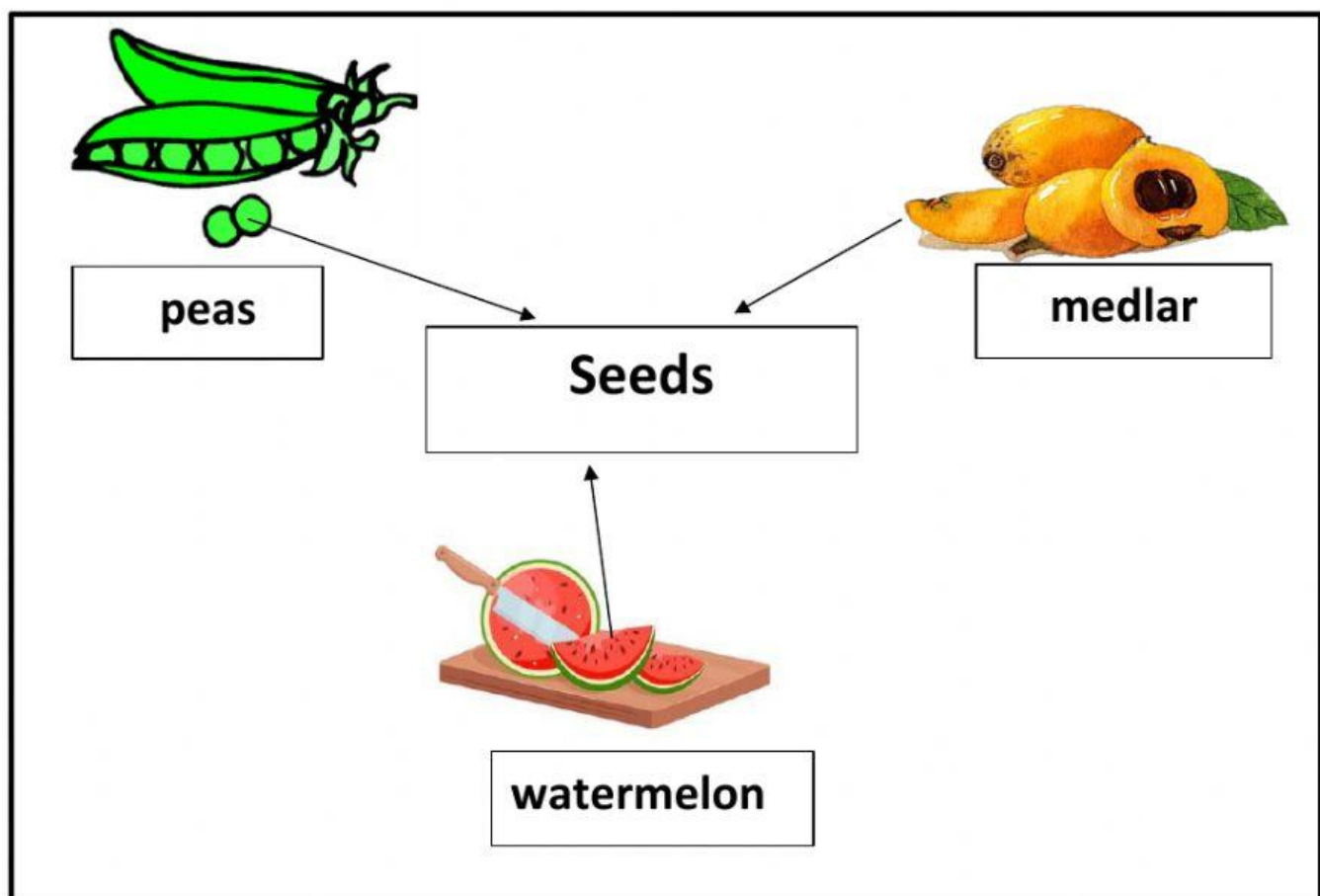
 Manahej	Science Department	<b>Quiz 2:</b> <b>Seeds of All Kinds</b> <b>Note: /10</b>
	Grade 1	

### Exercise 1: A seed to Every Fruit.

Observe document 1 then answer the following questions.



Document 1: A seed to Every Fruit

**A. Answer** with “T” if True and “F” if False using document 1. **(2pt)**



- The peas have the biggest seeds.



- The watermelon has the smallest seeds.



- The color of medlar seeds is green.



- The color of watermelon seeds is black.

**B. Drag** each word to the correct place. **(3pt)**

fruit

different

seed

- To every fruit a .

- The seeds are found in the  of the plant.

- Seeds have  shapes, colors, and sizes.

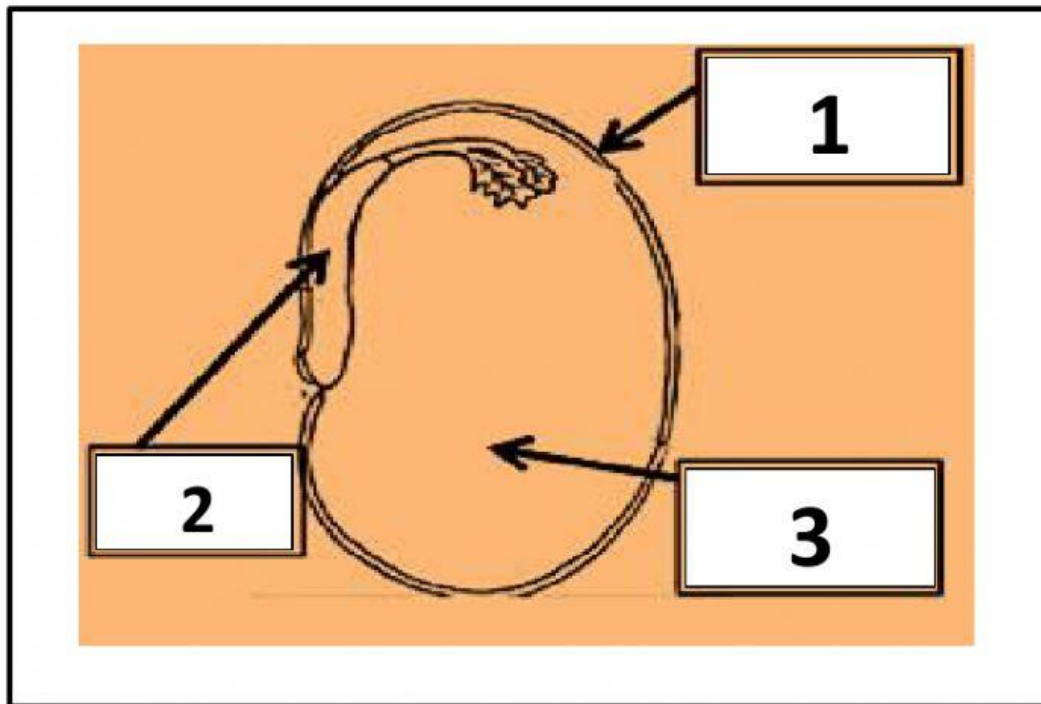
## Exercise 2: The constituents of a Bean Seed

A. Drag each part of the bean seed to the suitable number. (3pt)

cotyledon

seedling

skin



Document 2: The Constituents of a Bean Seed

1



2



3



B. Choose the correct answer. (2pt)

- The bean seed is formed of   cotyledons.
- The   is hidden between two cotyledons.