



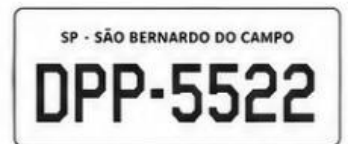
VEHICLE REGISTRATION PLATES



Look at the vehicle registration plates.
Read the text and answer the questions.



PART 1 – LOOK & OBSERVE



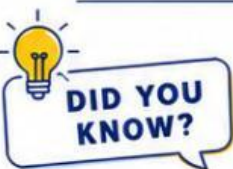
PART 2 – ANSWER THE QUESTIONS



- Find a different expression for 'registration plate'. (1 point)
l _____ p _____
- Find a word which means 'the size and style of printed letters'. (1 point)
t _____
- Which of these is NOT a correct format for an EU registration plate? (1 point)

<p>a blue background black letters</p>	<p>b yellow background black letters</p>	<p>c white background black letters</p>
---	---	--

- Why are German licence plates special? (2 points)



EU registration plates follow common rules to make them easy to read across all member states.
They usually include: EU symbol & country code, combination of letters and numbers, and national identifiers (optional).

