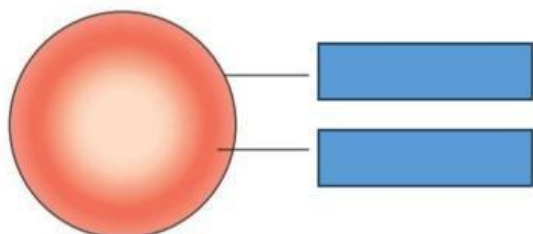
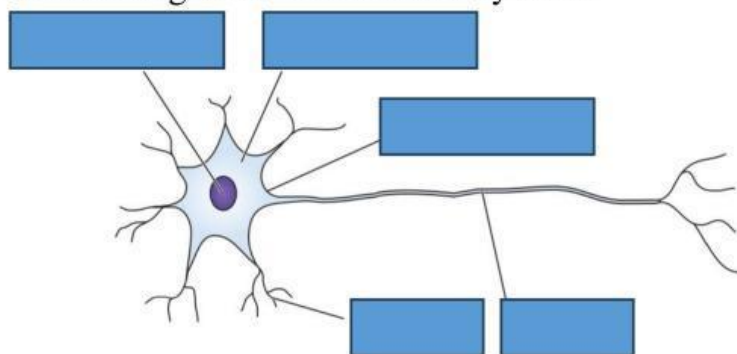


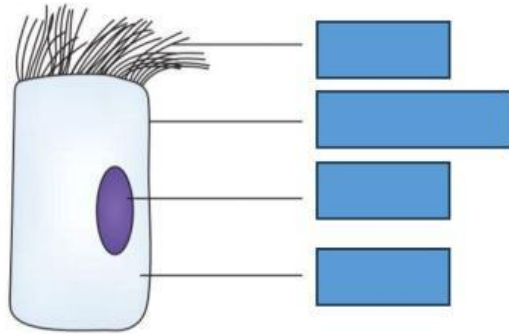
Red blood cells are _____ than most other cells in the body. This allows them to get through tiny blood _____, so they can deliver oxygen to every part of the body. The cytoplasm contains red pigment called _____. This carries _____ around the body. The cell has no nucleus. This leaves more space for _____.



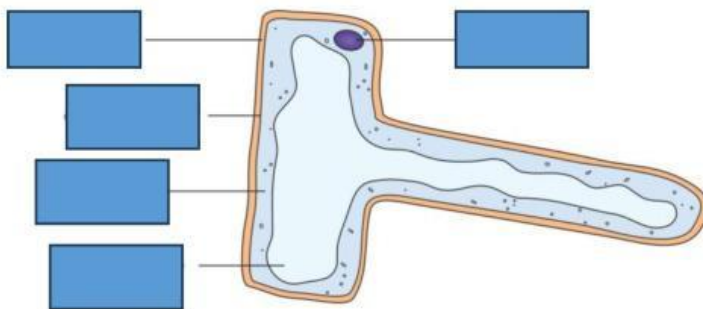
Neurones carry electrical _____ from one part of the body to another. They help all the different parts of the body to communicate with each other. The _____ is the long strand of cytoplasm. Electrical signals can travel along this very _____. _____ are short strands of cytoplasm that _____ electrical signals from other nearby cells.



Ciliated cells have tiny thread-like _____ along one edge. The cilia can move. One place in the body that contains ciliated cells is the lining of the tubes leading from _____ to _____. Other cells make a sticky substance called _____. When you breathe in, the mucus _____ dust and bacteria in the air. The cilia _____ the mucus up to the back of the mouth and you swallow it.



The function of root hair cells is to _____ water and minerals from the _____. Each cell has a long, thin _____ that allows water to move easily from the soil into the cell.



Palisade cells are found in the _____ of the plant. Their function is to make food by _____. They have a lot of _____. The chlorophyll absorbs energy from the sunlight.

