

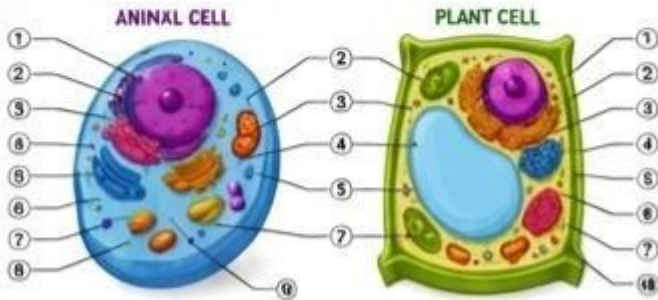


Cells are the basic units of life. Animal cells and plant cells have many similarities but also some important differences. Complete the activities below to test your understanding!

A. LABEL THE DIAGRAMS

Write the correct units of each part from the box.

Cell Wall Cell Fibres Cytoplasm Nucleus Mitochondria
Lysosomes Golgi Apparatus Rough ER Smooth ER
Lysozymes Vacuole Voloplasts Centrioles



B. MULTIPLE CHOICE

Circle the correct answer.

- Which part of the cell controls the activities?
 - Cell membrane
 - Cytoplasm
 - Nucleus
 - Mitochondria
- Which organelle is known as the "powerhouse" of the cell?
 - Mitochondria
 - Mitochondria
 - Golgi Apparatus
 - Lysosome
- Which structure is found in plant cells but NOT in animal cells?
 - Cell membrane
 - Cell wall
 - Nucleus
 - Ribosomes
- Which organelle contains chlorophyll and makes food for the plant?
 - Mitochondria
 - Chloroplast
 - Vacuole
 - Lysosome
- Which organelle stores water and helps with the plant cell flow?
 - Nucleus
 - Vacuole
 - Golgi Apparatus
 - Centriole
- Which structure helps in cell division in animal cells but is usually absent in plant cells?
 - Lysosomes
 - Vacuole
 - Centrioles
 - Cell wall

C. FILL IN THE BLANKS

- The jelly-like substance inside the cell is called _____.
- The control centre of the cell is the _____.
- _____ are tiny structures that produce energy.
- Plant cells have a thick outer covering called the _____.
- _____ are green structures that carry out photosynthesis.
- The large empty looking space in a plant cell is called _____.
- _____ help in packaging and transporting proteins.
- Animal cells have _____ but plant cells do not.
- _____ are found in both plant and animal cells.
- _____ break down waste and old cell parts.

D. COMPARE AND COMPLETE THE TABLE

Write *Y* if the structure is present, and *N* if it is absent.

Cell Structure	Animal Cell	Plant Cell	Function
Cell Wall			Shapes shape and protection
Cell Membrane			Controls what enters and leaves
Nucleus			Controls all cell activities
Mitochondria			Produces energy
Chloroplasts			Makes food (photosynthesis)
Large Central Vacuole			Stores water and maintains larger
Cytoplasm			Helps in cell division
Centrioles			Helps down waste materials
Lysosomes			Removes protein synthesis

E. SHORT ANSWER QUESTIONS

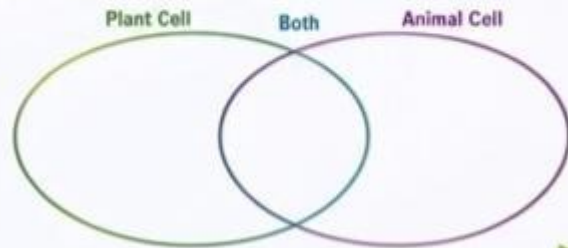
- What are the main differences between plant cells and animal cells?

- Why do plant cells have a cell wall?

- When two organelles that are found in both plant and animal cells and explain their functions.
 - _____ : _____
 - _____ : _____
- Why is the large vacuole important for a plant cell?

F. THINK AND DRAW!

Draw a Venn Diagram comparing plant cells and animal cells. Write at least 3 features in each section.



DID YOU KNOW?

The job you cell in plants is animals the on cell slants which can be used with the naked eye!



KEY WORDS

Cell Wall, Cell Membrane, Cytoplasm, Vacuole, Mitochondria, Lysosomes, Golgi Apparatus, Chloroplasts, Vacuole, Lysosomes, Centrioles



THINK!

How do plants and animals get their energy? How do plants and animals get their water? How do plants and animals get their food? What would be the importance of this?

