

Tên:



Week: 1

Lớp: S7...

Từ vựng HW:

Ngày giao bài: Thứ, ngày/.....

Nghe HW:

Ngày nộp bài: Thứ, ngày/.....

TRAVEL - VOCABULARY & PRESENTATION

A. VOCABULARY

Con bấm vào link/code để nghe và đọc lại từ vựng nhé:
https://soundcloud.com/ms-chi-english/for_w1_extra-vocabulary



No.	Word	Meaning	No.	Word	Meaning
1	accommodation (n)	chỗ ở, nơi lưu trú	7	currency (n)	tiền tệ
2	customs (n)	hải quan	8	embassy (n)	đại sứ quán
3	departure (n)	sự khởi hành, giờ khởi hành	9	immigration (n)	quá trình nhập cảnh, bộ phận nhập cảnh
4	destination (n)	điểm đến	10	reception (n)	quầy tiếp tân, lễ tân
5	itinerary (n)	hành trình, lịch trình	11	backpacker (n)	khách du lịch ba lô
6	reservation (n)	sự đặt chỗ trước, đặt phòng	12	travel insurance (n)	bảo hiểm du lịch

B. CLASSWORK

I. Match the words with their definitions.

Words	Definitions
1. departure	A. a plan or schedule of a trip or journey
2. itinerary	B. the time when a plane, train, or bus leaves
3. customs	C. the act of booking or arranging a place to stay
4. destination	D. the place where someone is going or the end point of travel
5. reservation	E. a place at the airport where travelers show their goods and pay taxes if needed

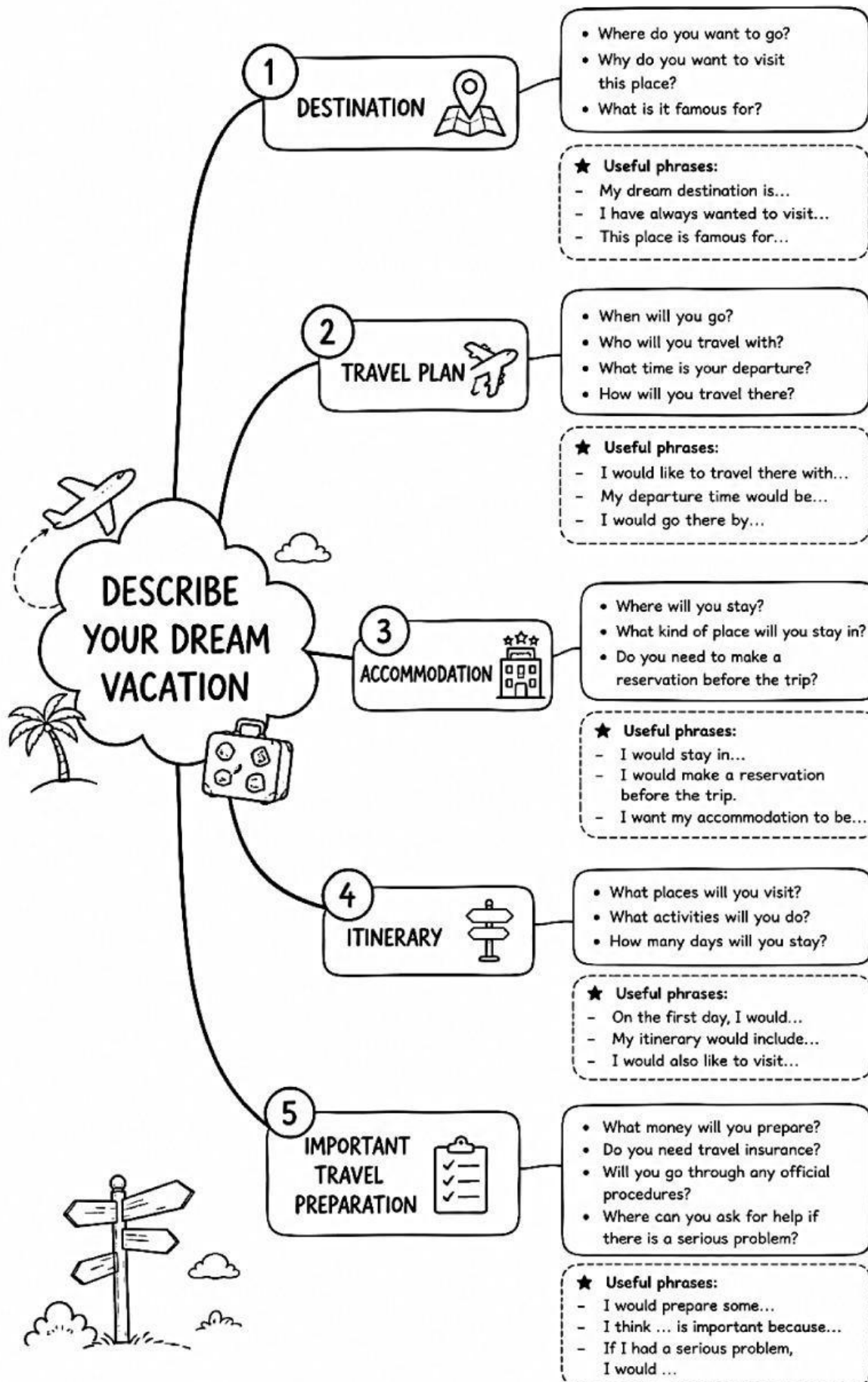
Your answer:

1 –	2 –	3 –	4 –	5 –
-----	-----	-----	-----	-----

II. Make complete sentences using the given words. Use the correct verb forms and add necessary words if needed.

- when / she / lose / passport / she / go / embassy / for help
→ _____.
- when / we / arrive / hotel / we / check in / reception desk
→ _____.
- I / like / this hotel / because / it / provide / comfortable accommodation / for all guests
→ _____.
- before / travel abroad / it / important / buy / travel insurance / cover unexpected events
→ _____.
- at 9 p.m. yesterday / we / make / reservation / at the restaurant / ensure a table for dinner
→ _____.

PRESENTATION



C. HOMEWORK

VOCABULARY (15 questions)

I. Con học thuộc nghĩa của từ, chính phát âm theo từ điển và chép mỗi từ ở phần A. Vocabulary (trang 1) 1 dòng vào vở ghi.

II. Read the text and choose the correct answers.

Ella's Travel Experience

Ella planned a trip to Europe last summer. Before she left, she made a reservation at a small hotel in Paris. When she arrived at the airport, she first went through (1) _____, where officers checked her passport and asked a few simple questions. After that, she exchanged some money for the local (2) _____ so she could buy food, train tickets and souvenirs during the trip.

Ella had prepared her (3) _____ carefully because she wanted to visit several museums and castles in only a few days. Before leaving the airport, she had to show some goods at (4) _____. Later, when she reached the hotel, the (5) _____ desk helped her check in and gave her the room key.

- | | | | |
|----|----------------|----------------|---------------------|
| 1. | A. currency | B. immigration | C. embassy |
| 2. | A. backpacker | B. currency | C. accommodation |
| 3. | A. itinerary | B. departure | C. travel insurance |
| 4. | A. destination | B. embassy | C. customs |
| 5. | A. reception | B. currency | C. immigration |

III. Fill in the blanks with the words in the box. Some words will not be used.

travel insurance	immigration	departure	destination
itinerary	backpacker	currency exchange	

- At the airport, officers checked our passports before we went through _____.
- Our travel _____ shows the places we will visit each day.
- I went to the _____ to change my money into local currency.
- After a long flight, we arrived at our _____ and took a taxi to the hotel.
- You should buy _____ before your trip because it can help if you get sick or lose your bags.

IV. Read each sentence and choose the best answer with the same or closest meaning.

- You must go through immigration when you enter the country.
 - Immigration is the place where people check your passport.
 - Immigration gives you your hotel room key.
 - Immigration covers your trip if it is cancelled.
- The embassy helps your country's citizens when they are abroad.
 - The embassy is located here.
 - The embassy carries their bags here.
 - The embassy helps people from your country in another country.
- When you arrive at the hotel, you go to the reception to check in.
 - Reception is where they check your passport.
 - Reception is where you check in to the hotel.
 - Reception helps pay for your medical bills.
- A backpacker is a person who carries their belongings in a backpack.
 - A backpacker is someone who exchanges currency at the airport.
 - A backpacker is an official working at the embassy.
 - A backpacker usually travels and brings everything in a backpack.

5. Travel insurance pays for problems like trip cancellations or illness.
 - A. Travel insurance covers you if you have problems during your trip.
 - B. Travel insurance is a place where you get your hotel key.
 - C. Travel insurance is where you check your passport.

LISTENING PRACTICE (10 questions)

Lưu ý:

1. Khi làm bài tập có từ mới, các con phải tra từ điển. Sau khi tra từ điển, các con chép mỗi từ mới **1 dòng** để ghi nhớ.
2. Các con gạch chân các từ khoá chính trong bài.

I. PET Part 2: For each question, choose the correct answer.



Con làm bài nghe theo link/code sau:
https://soundcloud.com/ms-chi-english/pet-part-2_w1

1. **You will hear two students talking after they arrive at an airport. What does the boy need to do first?**
 - A. go through immigration
 - B. visit the embassy
 - C. find his accommodation
2. **You will hear a girl talking to a hotel receptionist. What information does the receptionist ask for?**
 - A. her reservation number
 - B. her travel insurance
 - C. her itinerary
3. **You will hear two friends talking about a school trip. What has changed?**
 - A. the destination
 - B. the departure time
 - C. the accommodation
4. **You will hear a boy talking about preparing for a trip. Why did he buy travel insurance?**
 - A. It can help if there are problems during the trip.
 - B. It helps him exchange money.
 - C. It gives him a cheaper hotel room.
5. **You will hear two backpackers talking in a new city. Where are they going next?**
 - A. to the currency exchange
 - B. to customs
 - C. to the reception desk

II. Extra Listening



Con làm bài nghe theo link/code sau:
https://soundcloud.com/ms-chi-english/pet-part-2_w1

Listen to the audio again and decide if each statement is True or False.

1. The boy and girl need to collect their bags before going through immigration. → _____
2. The girl booked a room at Green Star Hotel online last week. → _____
3. The school trip destination has changed to a different museum. → _____
4. The bus will leave at 8:00 instead of 8:30. → _____
5. The backpackers need to go to the hostel because the reception desk has their room keys. → _____