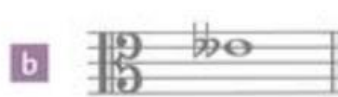


Exercise 7 Tick one box to show the correct name of each of these notes.



- E double sharp
- C sharp
- C double sharp
- E double flat



- F double flat
- E double flat
- D flat
- F double sharp



- G double sharp
- E double sharp
- E sharp
- G double flat



- D double flat
- A double sharp
- F double sharp
- C double flat



- C double sharp
- C double flat
- B double sharp
- D double sharp



- B double flat
- D flat
- B sharp
- D double flat