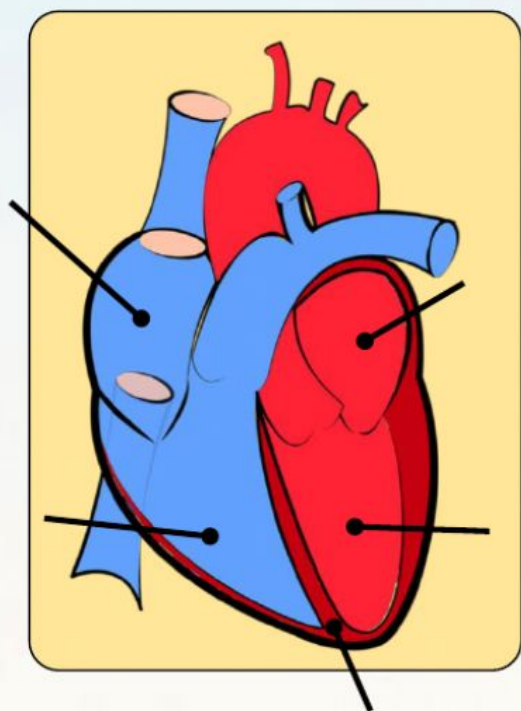
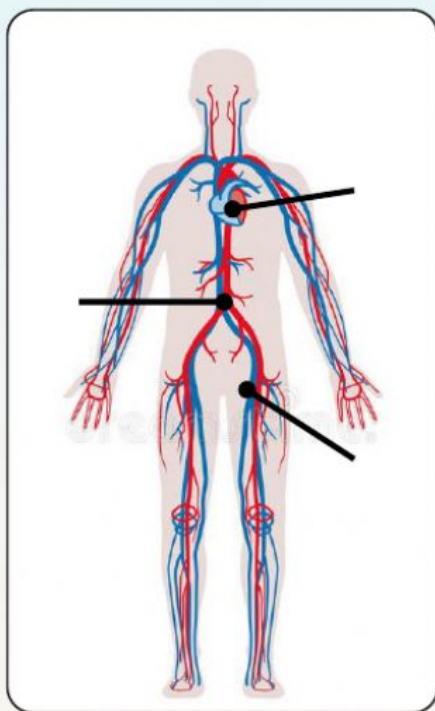
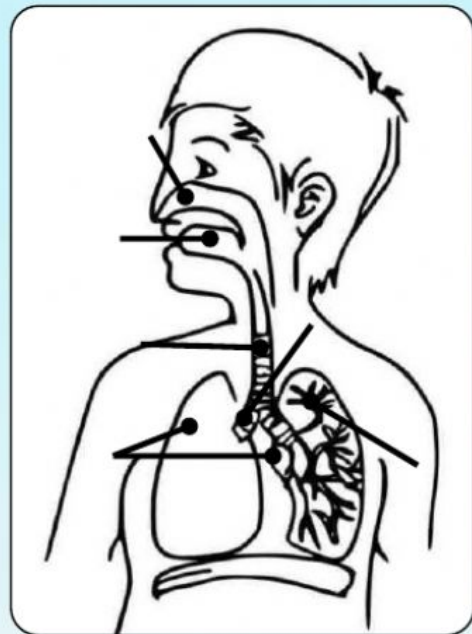
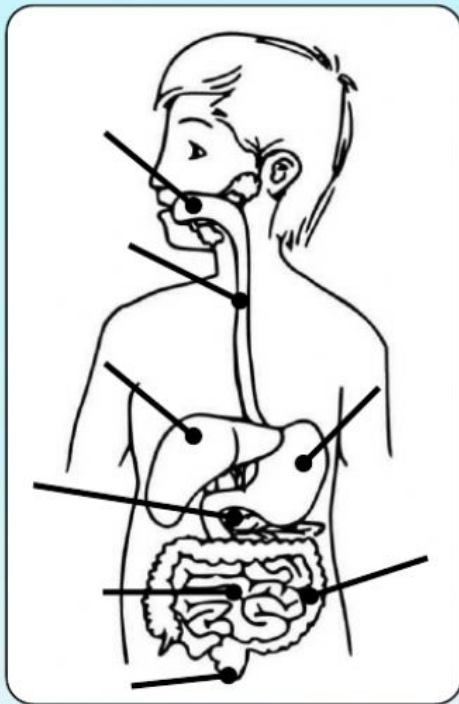
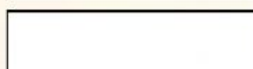
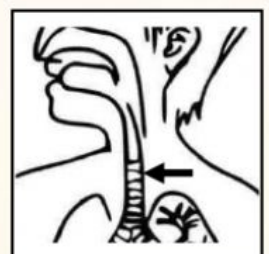
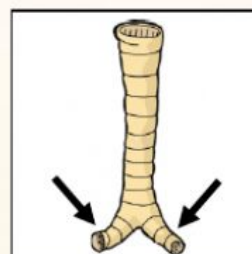
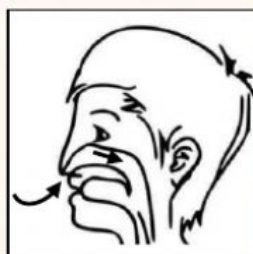
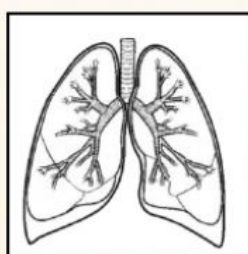
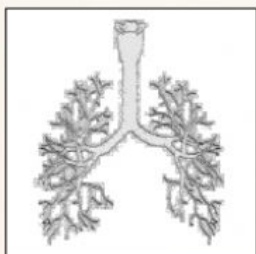




1 Write the name of the systems and label their organs.

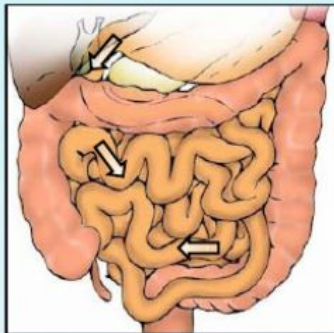
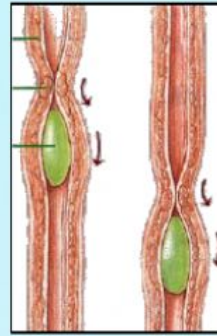
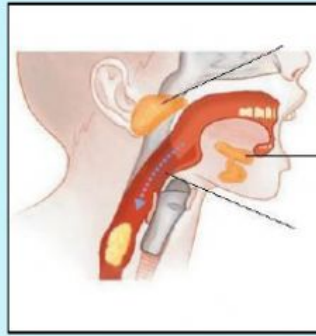


2 Write, with numbers, what happens first. Then, drag each text to its picture.





3 Copy, below the picture, the correct sentence at the bottom.



- The parts of the food our body doesn't need, continue into it.
- The food travels down to the stomach through it.
- The girl is eating a sandwich.
- Here, the food is break down by acidic solutions.
- It expulses the feces out of our body.
- There, we chew the food to break up it.
- In it, nutrients from food are absorbed into our blood.

4 Complete the sentences touching the correct word.

- When we **breathe in / breathe out** , we **take / expulse** oxygen.
- When we **breathe in / breathe out** , we **take / expulse** carbon dioxide.
- Veins carry blood **with / without** oxygen.
- Arteries carry blood **with / without** oxygen.
- In the **small / large** intestine, nutrients from food are absorbed and go into the blood.

5 Guess the organ.

Is what moves the blood.

Is a liquid that carrying nutrients and oxygen



6

Write *digestive*, *respiratory* or *circulatory*.

It takes oxygen and expulses carbon dioxide.

Is the system where blood vessels are.

It collects nutrients and oxygen.

Is the system where bronchioles are.

It separates nutrients from food.

It chews the food to break up it.

7

Match each organ with its system.

OrgansSystemsOrgans

Bronchi ●

Small intestine ●

Bronchioles ●

Anus ●

Liver ●

Stomach ●

Arteries ●

● Respiratory ●

● Digestive ●

● Circulatory ●

● Large intestine

● Heart

● Lungs

● Trachea

● Veins

● Pancreas

● Oesophagus

8

Complete the wordsearch.

|   |   |   |   |   |   |   |   |   |   |   |   |   |   |
|---|---|---|---|---|---|---|---|---|---|---|---|---|---|
| A | L | V | E | O | L | I | W | U | K | C | Q | O | M |
| M | N | I | X | E | N | R | B | L | O | O | D | B | C |
| P | M | U | A | O | X | V | U | U | T | X | E | R | E |
| L | E | W | S | C | X | D | S | N | U | M | U | E | P |
| B | R | O | N | C | H | I | Y | G | T | V | V | A | S |
| O | B | E | Q | Z | J | S | K | S | W | E | A | T | T |
| X | Z | U | R | Q | H | P | E | C | X | I | M | H | O |
| Y | U | R | E | T | E | R | S | D | M | N | T | E | M |
| G | T | C | L | Y | A | R | M | O | E | S | U | F | A |
| E | L | I | V | E | R | F | L | U | M | W | P | X | C |
| N | T | Q | U | O | T | R | A | C | H | E | A | L | H |
| U | R | E | T | H | R | A | L | X | M | I | U | L | Z |

LIVER

BREATHE

BRONCHI

OXYGEN

STOMACH

HEART

VEINS

LUNGS

ANUS

BLOOD

TRACHEA