

1. Draw a line.

$$9 \times 3$$

$$4 \times 7$$

4 groups of 7

6 groups of 5

$$30$$

$$27$$

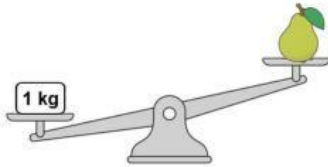
2. Fill in the blanks correctly!

$$3 \times 9 = 27$$

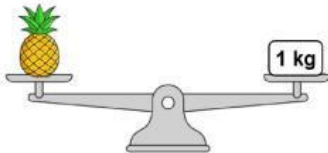
$$\underline{\quad} \div 3 = \underline{\quad}$$

$$27 \div \underline{\quad} = \underline{\quad}$$

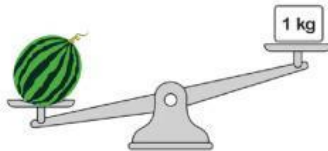
3. Fill in the blanks with **more than**, **less than**, or **as heavy as**.



The mass of pear is ... 1 kg.

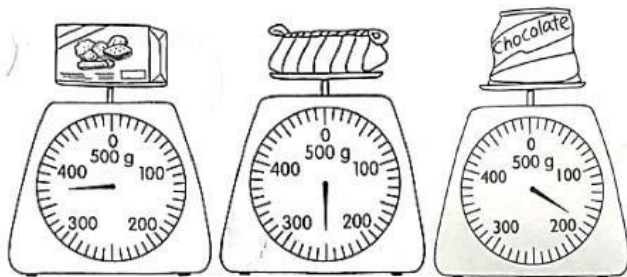


The mass of pineapple is ... 1 kg.



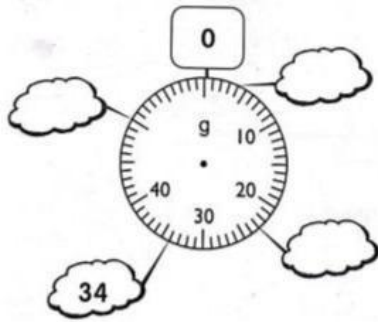
The mass of watermelon is ... 1 kg.

4. Tick (✓) the correct statement!



- a. A box of biscuits is heavier than a bag of chocolate.
- b. Pencil case is the heaviest item.
- c. chocolate is the lightest item.

5. Fill the missing number on the scale!



6. This is callender for the year 2024.



- Two months before April is
- The month between September and November is
- If it is July now and Hagma's birthday is in five months' time, her birthday will be in

7. Collect and look at these objects.

Then fill in the blanks.

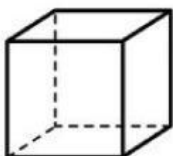


a. The watermelon has ... flat surfaces.



b. The paper cup has ... flat surfaces.

8. How many flat surfaces, edges, and corners are there? Count.



- ... flat surface
- ... corners
- ... edge

9. How many flat surfaces are there on these objects?



Cereal box



vase



volley ball



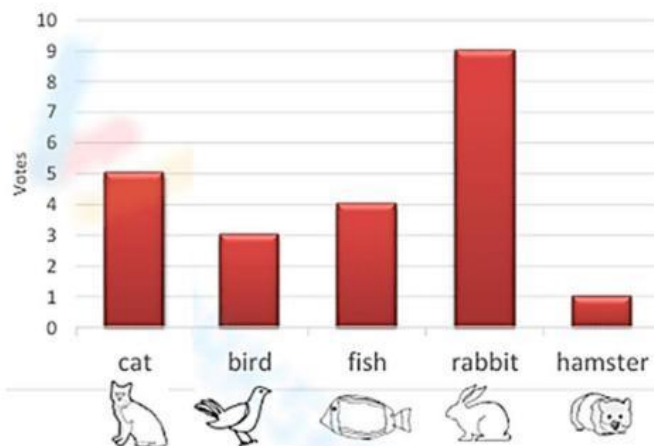
drum

Fill your answer below!

0 flat surfaces	
1 flat surface	
2 flat surfaces	
6 flat surfaces	

10. The children in 2A class had a vote on their cutest pets.

Pet Survey



Write **T** for true and **F** for false in the boxes.

- a. The most favourite pet is rabbit.
- b. Cat is favourite for 6 students.
- c. birds has 6 fewer students than rabbit.
- d. Fish has the least number of students.