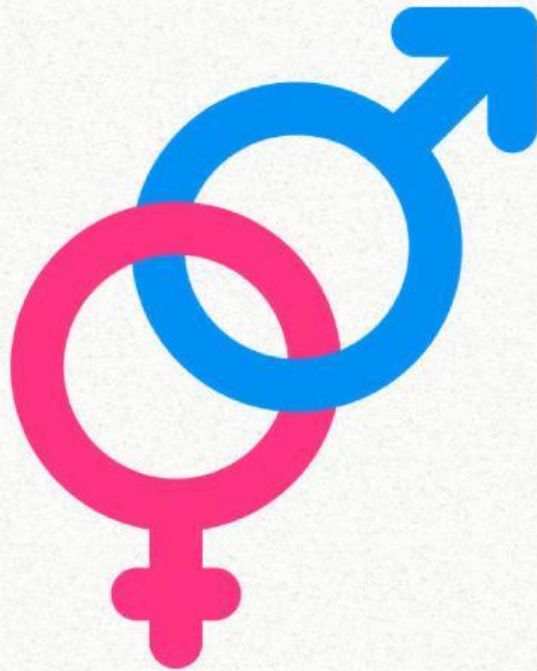


Worksheet

Human reproductive system 1



Group :

Name :

Instituion : SMA Garuda
Grade/ Semester : XI/2
Time Allocation : 1x25 menit

Subject : Biologi
Phase : F
Academic year : 2024/2025

Learning Objective

Students are able to analyze and distinguish the structure and function of the organs making up the human reproductive system through group discussions accurately and completely

Instruction

1. The teacher will divide students into several groups.
2. Read and comprehend the provided article.
3. Discuss your answers collaboratively with your group.
4. Write your responses in the space provided.
5. Use textbooks or other credible sources as references.

Learning materials

Scan the QR code below to access the learning materials!



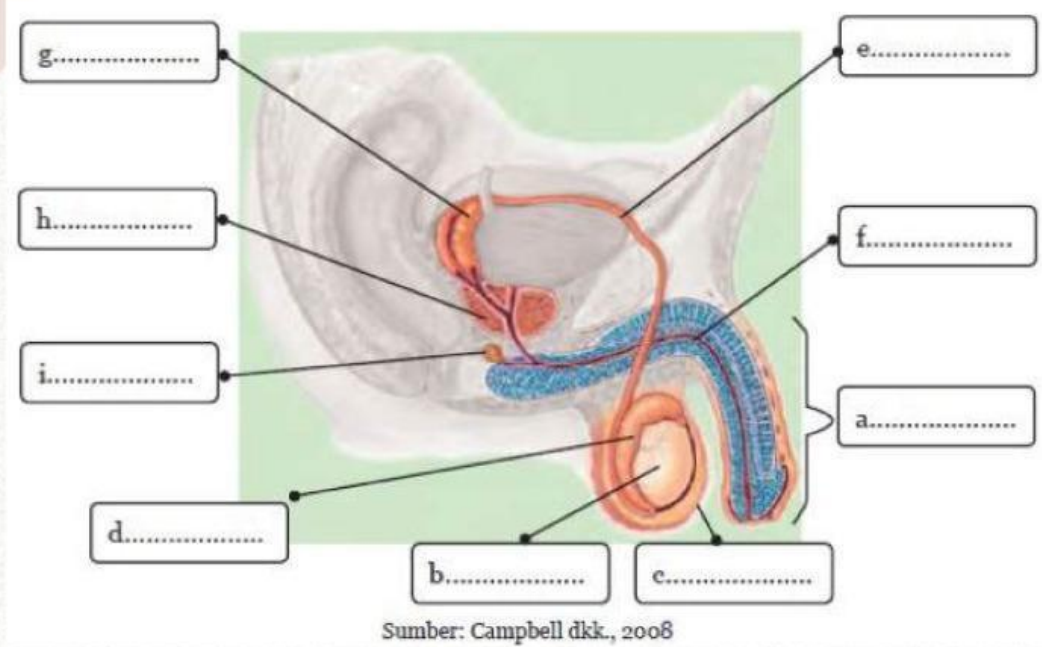
Male Reproductive system



Female Reproductive system

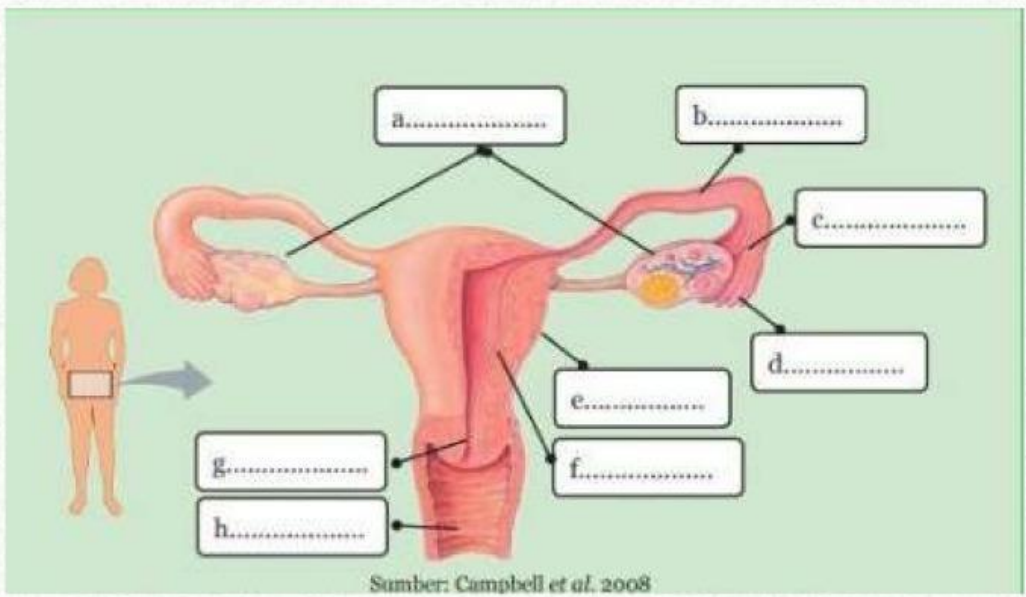
1. Look at the diagrams of the male and female reproductive systems below. Complete the organ names by dragging the answers next to the images and placing them in the correct boxes

Male Reproductive system



Penis
Vas deferens
Prostate gland
Urethra
Seminal vesicle
Scrotum
Cowper's gland
Epididymis
testicle

Female Reproductive system



Vagina
Uterus
infundibulum
ovary
endometrium
cervix
Fallopian tube
fimbriae

Draw lines to match each organ with its respective function. Ensure that you read carefully before making the matches.

Male Reproductive system

Penis

Vas deferens

Prostate gland

Urethra

Seminal vesicle

Scrotum

Cowper's gland

Epididymis

testicle

Structure Description
The external part of the male reproductive organ that functions as a passage for urine and sperm.
A sac-like structure that contains the testes and functions to regulate their temperature for optimal sperm production.
An oval-shaped organ located inside the scrotum that functions to produce sperm and the hormone testosterone.
A tube extending from the testis, approximately 4 cm in length, that functions as a temporary storage site for sperm
A long tube that extends upward as a continuation of the epididymis. It functions to connect the epididymis to the urethra.
A canal located within the penis. It is the final part of the reproductive tract and functions as a passage for both sperm and urine.
A sac-like structure, approximately 5 cm in size, located behind the urinary bladder. It functions to produce substances necessary for sperm development
A donut-shaped gland located below the urinary bladder. It functions to produce acidic fluid.
A bean-shaped gland located below the prostate gland. It functions to produce mucus and alkaline fluid.

Female Reproductive system

Vagina

Uterus

infundibulum

ovary

endometrium

cervix

Fallopian tube

fimbriae

Structure Description

An egg-shaped structure, consisting of two organs located on the right and left sides of the uterus, that functions to produce egg cells.

A canal approximately 10 cm long that connects the ovary to the uterus.

A fringed structure that forms the end of the fallopian tube.

A funnel-shaped structure at the end of the fallopian tube that functions to capture the egg cell released from the ovary after ovulation.

A pear-shaped organ that functions as the place where the fetus develops during pregnancy.

The inner lining of the uterus that sheds during menstruation.

A canal that connects the external environment to the uterus, serving as the passage for menstrual blood and the birth canal.

The lower, narrowed part of the uterus that opens into the vagina.

Write a conclusion based on today's learning!

You are doing
★ GREAT! ★