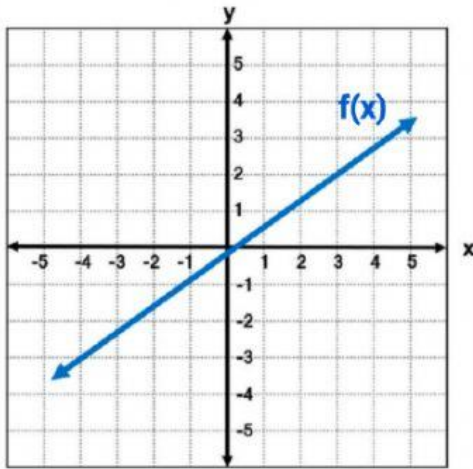


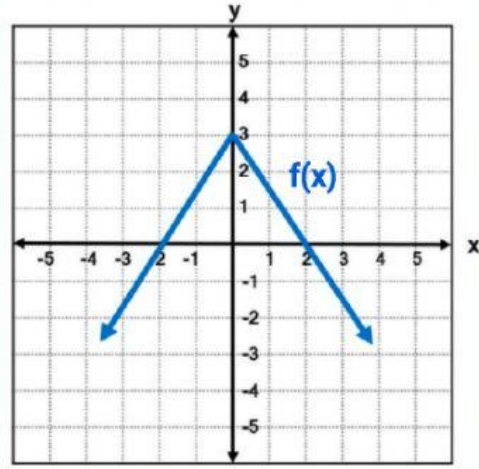
Evaluating Functions From A Graph Practice

Evaluate each function



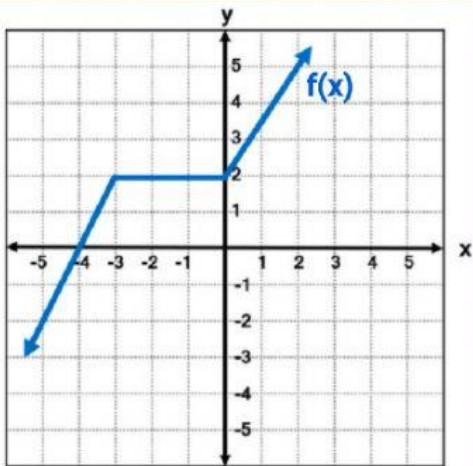
$$f(3) = \underline{\hspace{2cm}}$$

$$f(x) = -3, x = \underline{\hspace{2cm}}$$



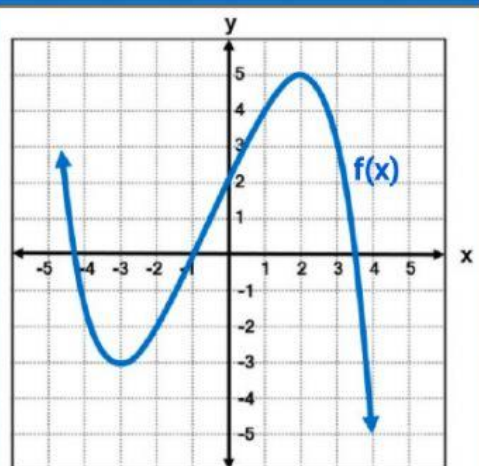
$$f(2) = \underline{\hspace{2cm}}$$

$$f(x) = 3, x = \underline{\hspace{2cm}}$$



$$f(-1) = \underline{\hspace{2cm}}$$

$$f(x) = -2, x = \underline{\hspace{2cm}}$$



$$f(0) = \underline{\hspace{2cm}}$$

$$f(x) = 5, x = \underline{\hspace{2cm}}$$