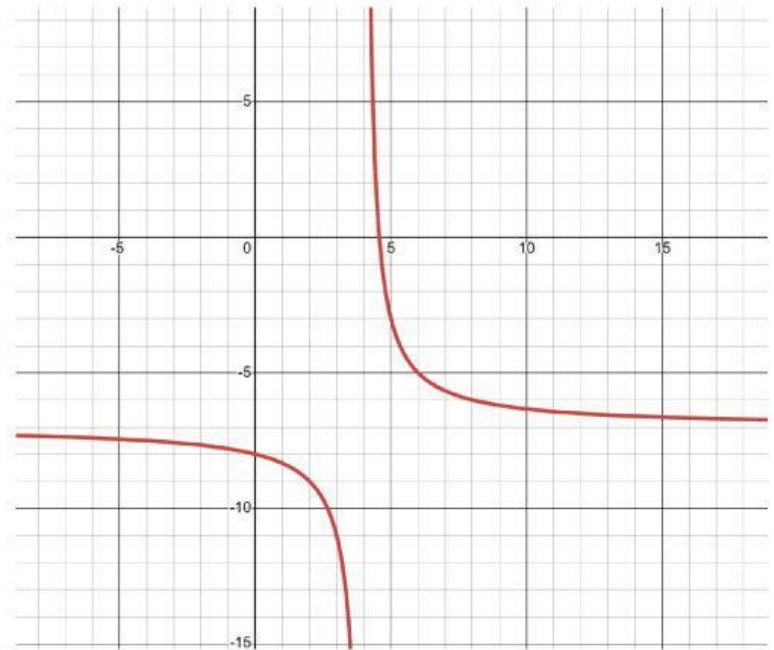


Math - Graphing reciprocal Functions

Q : Describe the transformations of the function.

$$f(x) = \frac{4}{x - 4} - 7$$



- A)** shifted left by 4 units,
Shifted down by 7 units
Compressed Vertically
- B)** Shifted right by 4 units,
Shifted down by 7 units
Compressed Vertically
- C)** Shifted right by 4 units,
Shifted up by 7 units
Stretched Vertically
- D)** Shifted right by 4 units,
Shifted down by 7 units
Stretched Vertically