

Name: \_\_\_\_\_

Date: \_\_\_\_\_

## Part A: Multiple Choice

**INSTRUCTIONS:** Circle the letter next to the correct answer.

1. Which of the following pairs correctly gives an example of an inherited trait and an environmental influence?
  - (a) Proper posture - football skills
  - (b) Eye colour - cooking skills
  - (c) Language- table manners
  - (d) Proper posture - Language
  
2. Parents who teach their children values such as honesty, respect, and cooperation are performing the family function of
  - (a) procreation
  - (b) protection
  - (c) economic support
  - (d) socialization
  
3. Lusca lives with her mother, stepmother, stepsister and little brother. What type of family does Lusca have?
  - (a) nuclear family

- (b) extended family
  - (c) blended family
  - (d) single-parent family
4. What is the name of the diagram that shows how family members are related across generations?
- (a) family record
  - (b) family history
  - (c) family tree
  - (d) family register
5. Which responsibility is mainly carried out by a teacher in a school?
- (a) planning lessons and guiding student learning
  - (b) supervising the entire school administration
  - (c) maintaining school buildings and facilities
  - (d) enforcing security at school entrances

(5 marks)

## Part B: True or False

**Instructions:** Write T for True or F for False.

1. A blended family consists only of parents and their biological children. \_\_\_\_\_
2. Characteristics are qualities that describe how a person behaves or thinks. \_\_\_\_\_
3. The environment has no influence on how people develop. \_\_\_\_\_
4. Financial burdens can cause conflict in families. \_\_\_\_\_
5. A strong trait appears even when only one parent passes it to the child. \_\_\_\_\_  
(5 marks)

## Part C: Matching

**Instructions:** Draw a line to match each role in Column A with its correct responsibility in Column B.

### School Role

### Responsibilities

Principal

- Helps students with personal, academic and career problems.

Counsellor

- Manages the overall administration of the school.

Librarian

- Maintains order and protects the school premises.

Security Guard

- Organizes and manages books and learning resources.

Janitor

- Keeps the classrooms clean and maintains the school.

(5 marks)

## Part D: Short Answer (3 items)

1. State two reasons why secondary education is important.

a. \_\_\_\_\_  
\_\_\_\_\_

b. \_\_\_\_\_  
\_\_\_\_\_

(2 marks each)

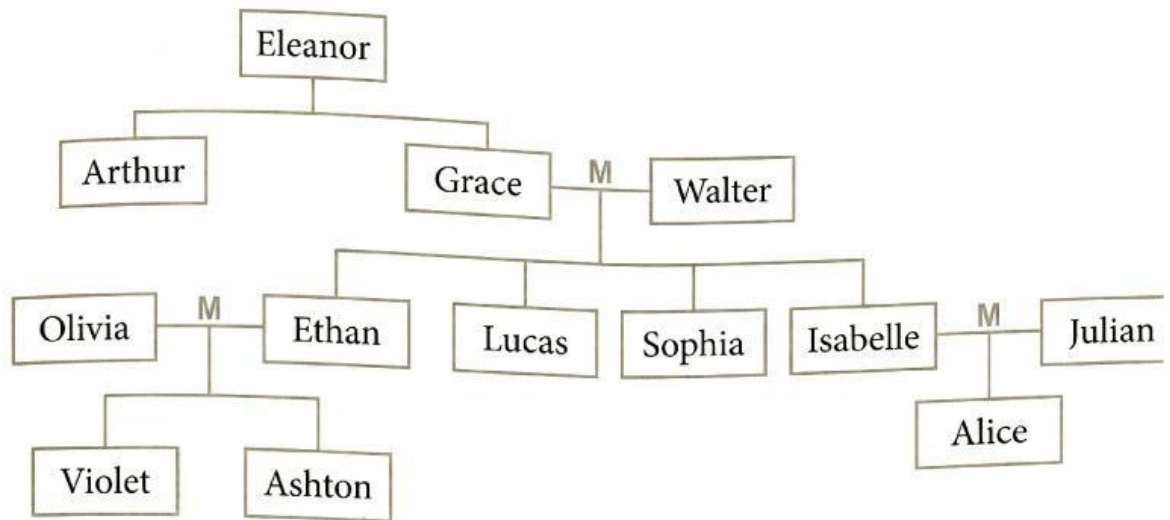
2. List two responsibilities of family members in the home.

a. \_\_\_\_\_  
\_\_\_\_\_

b. \_\_\_\_\_  
\_\_\_\_\_

(1 mark each)

3. Questions A and B refer to the following diagram.



A. What is the relationship between Ashton and Violet?

---

---

(1 mark)

B. If Grace became an aunt, which person in the diagram most likely had a baby?

---

---

---

(1 marks)

C. Grace wants all her grandchildren to get along with each other. Identify two actions she could encourage to help maintain harmony in the family.

1) \_\_\_\_\_  
\_\_\_\_\_  
\_\_\_\_\_

2) \_\_\_\_\_  
\_\_\_\_\_  
\_\_\_\_\_

(2 marks each)

