

PARTS OF THE BODY

abdomen

ankle

arm

armpit

breast

calf

chest

elbow

foot

forearm

genitals

groin

hand

head

heel

hip

knee

leg

navel

neck

nipple

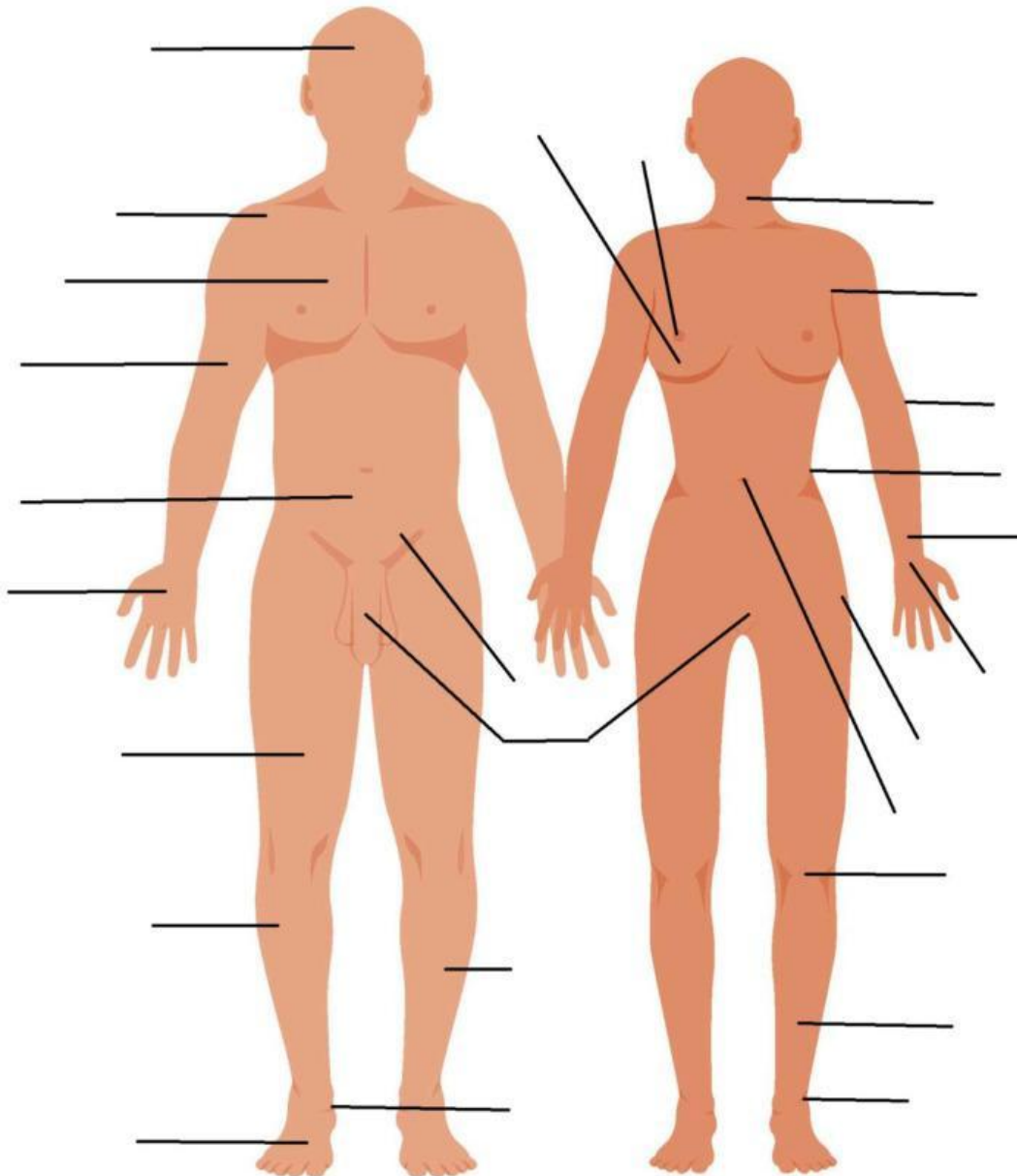
shin

shoulder

thigh

waist

wrist



Match the word with the definition (write down only the letter)

A. head	J. abdomen	S. navel
B. breast	K. waist	T. knee
C. nipple	L. forearm	U. leg
D. shoulder	M. hand	V. calf
E. neck	N. wrist	W. shin
F. chest	O. thigh	X. foot
G. armpit	P. groin	Y. heel
H. arm	Q. genitals	Z. ankle
I. elbow	R. hip	

1. The top part of the body where the brain, eyes, nose and mouth are.
2. The joint between the head and the body.
3. The part of the body between the neck and the abdomen.
4. The upper part of the arm, between the head and the elbow.
5. The joint in the middle of the arm.
6. The lower part of the arm, between the elbow and the wrist.
7. The part of the body at the end of the arm, with fingers.
8. The joint that connects the hand and the arm.
9. The middle part of the body, between the chest and the hips.
10. The narrow middle part of the body above the hips.
11. The long part of the body between the shoulder and the hand.
12. The upper part of the leg, between the hip and the knee.
13. The joint in the middle of the leg.
14. The long part of the body between the hip and the foot.
15. The front part of the lower leg.
16. The back part of the lower leg.
17. The part of the body at the end of the leg.
18. The back part of the foot.
19. The joint between the foot and the leg.
20. The place under the arm.
21. The soft part of a woman's chest.
22. The small part in the centre of the breast.
23. The centre of the stomach (belly button).
24. The part of the body at the side above the leg.
25. The lower part of the stomach area.
26. The reproductive organs of the body.

Watch the video and define skeleton parts

