



**Santa Rosa de Lima Primary School**  
**First Science Short Test**  
**I Trimester 2021**

Fourth Grade  
Teacher Xinia Acuña Solís  
Time: 70 minutes  
Total points: 34 pts

Obtained points: \_\_\_\_\_  
Percentage: 15%  
Obtained %: \_\_\_\_\_  
Score: \_\_\_\_\_

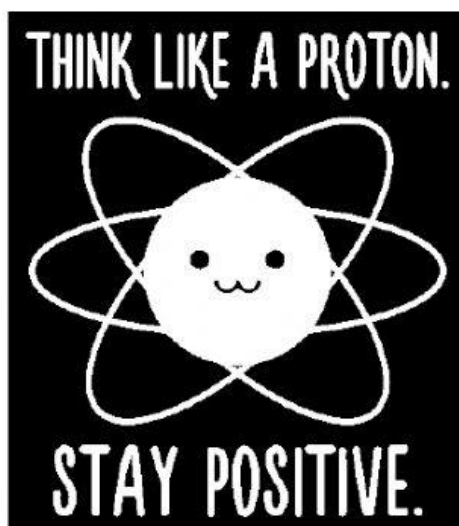
Date: \_\_\_\_\_

Name: \_\_\_\_\_

Parent's signature: \_\_\_\_\_

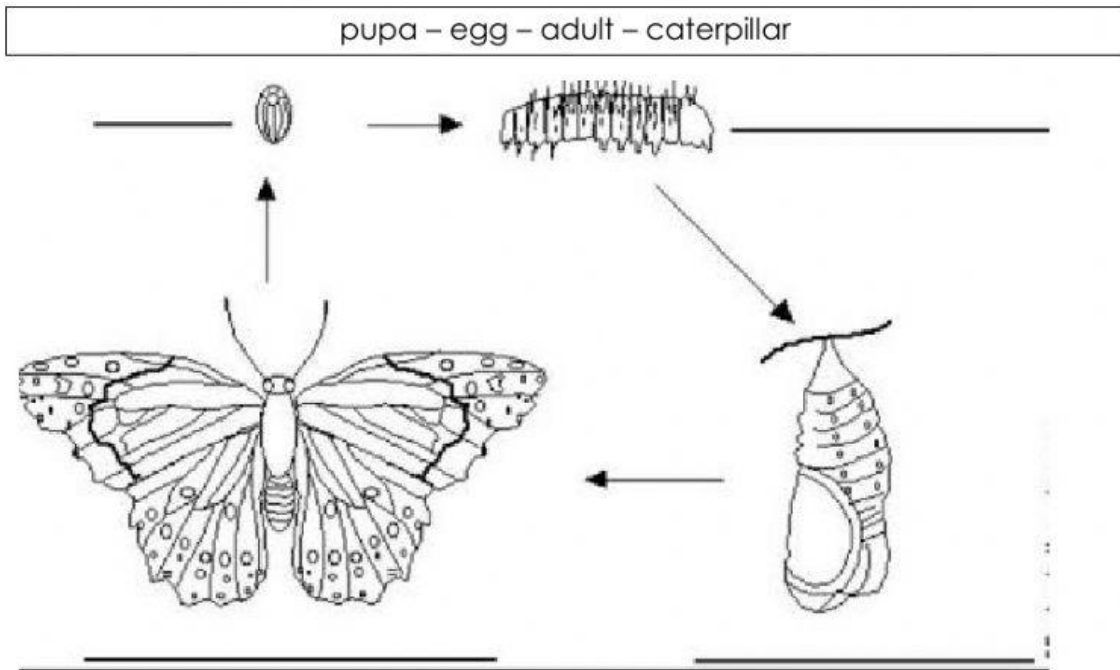
**General Instructions:**

1. Read the whole test carefully with the teacher before you start.
2. If you have questions ask them after the test reading.
3. Work in order, clear handwriting and with good orthography.
4. Complete your test in order, silently and without looking at your classmates' test.
5. Use only black or blue pen.
6. Don't use white out.
7. Check your test before handing it in.

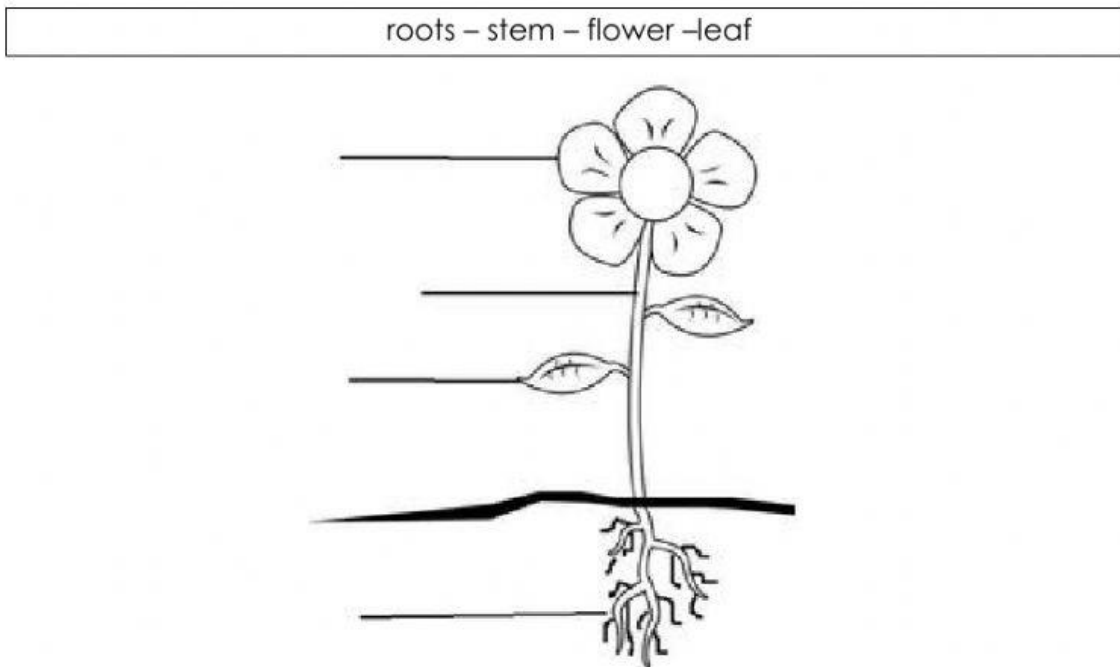


**I Part. Identification. Value 13 points. (1 point each one).**

**A. Instructions:** Label the butterfly life cycle. (4 pts)

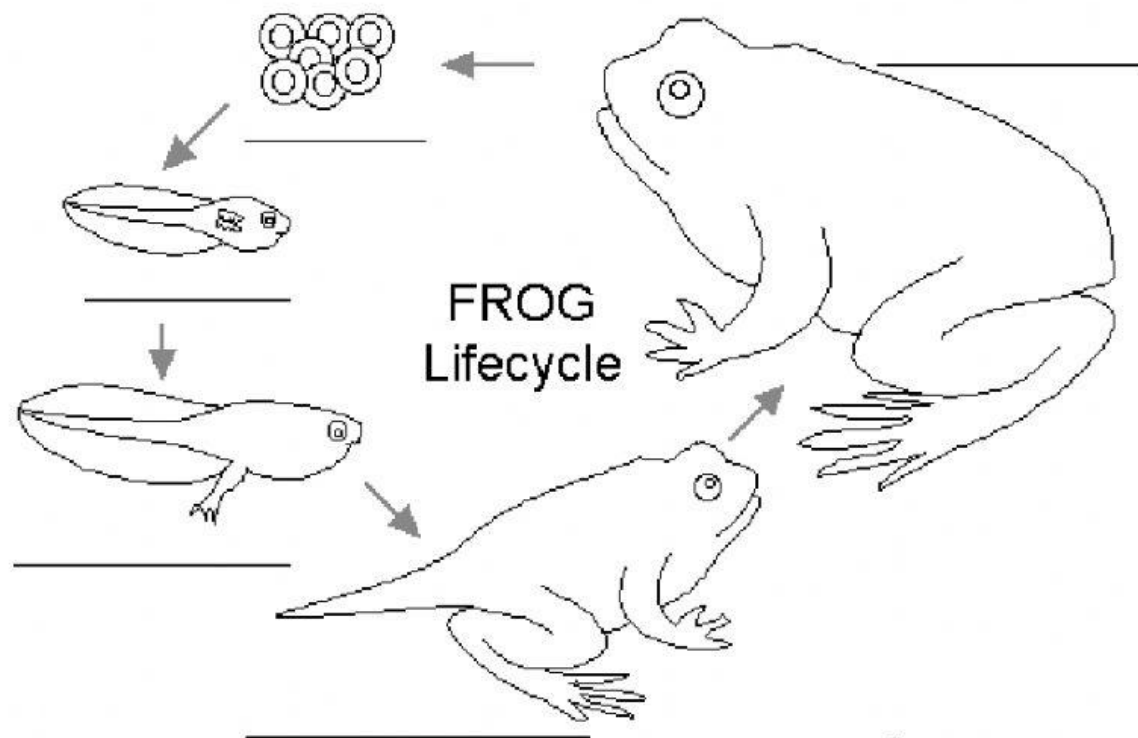


**B. Instructions:** Label the plants parts. (4 pts)



**C. Instructions:** Label the frog life cycle. (5 pts)

adult – eggs – young frog – tadpole – tadpole with legs



**II Part. Short Answer. Value 11 points. (1 point each one).**

**Instructions:** Write the correct answer in the blanks.

**1. Three different pollinators are**

---

---

---

**2. Four stages of a flowering plant life cycle are**

---

---

---

---

**3. Two parts of a tadpole's body that are similar to a fish's body are**

---

---

**4. Two types of stems are**

---

---

**III Part. Match. Value 10 points. (1 point each one).**

**Instructions:** Match the meanings in Column A with the correct words in Column B.

Column A	Column B
It is any material needed by living things for energy, growth and repair. ( )	1. Fibrous roots
They make plant's food. ( )	2. Tap roots
They take in water and minerals from the soil. ( )	3. Life cycle
They support the leaves, flowers and fruits. ( )	4. Nutrient
It is to make more of the same kind. ( )	5. Leaves
It is to begin to grow. ( )	6. Stem
The stages through which a living thing passes during its life. ( )	7. Roots
It is to carry pollen. ( )	8. Reproduce
Roots that grow deep into the soil toward Earth's center due to gravity. ( )	9. Pollinate
Roots that grow close to the surface to take in water after it rains. ( )	10. Germinate