

## Activity 8

Like parent, like child

### Process skills: Observing, comparing

1. Match the following pictures of adult animals with their young.

(a) mosquito



(b) toad



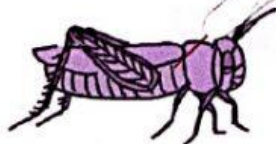
(c) moth



(d) beetle



(e) grasshopper



2. Which of these young animals look like their parents?

---

---

3. Which of these young animals do not look like their parents?

---

---

4. Will these young animals that do not look like their parents eventually grow up to look like their parents?

---

5. Do you look like your parents? In what ways are you and your parents alike?

---

---



## Revision Worksheet 4

- (a) Classify the following insects into two different groups based on the types of life cycles they have.

mosquito

grasshopper

cockroach

butterfly

**Group 1**

**Group 2**

- (b) Draw a simple diagram of the life cycle of each group of animals.

**Group 1**

Which animal has a life cycle that resembles the 1st's cycle? Show it below.

If a moth feeds on leaves, at which stage of its cycle does it feed?

At which stage does it stop feeding?

Communicating

## Group 2

