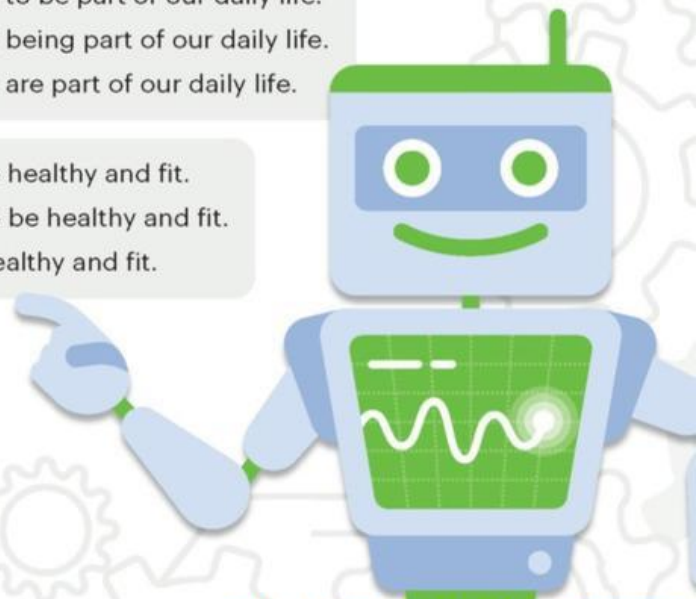


1. CHOOSE THE CORRECT OPTION THAT RESPECT THE **PARALLEL STRUCTURE**.

1. ☐ Robots will be able to drive and says words.  
☐ Robots will be able to drive and say words.  
☐ Robots will be able to drive and said words.
2. ☐ Melisa likes going out with friends, having fun in parties, and travels with friends.  
☐ Melisa likes going out with friends, having fun in parties, and travel with friends.  
☐ Melisa likes going out with friends, having fun in parties, and traveling with friends.
3. ☐ Some robots are designed to explore underwater, go down into volcanoes, and traveling to other planets.  
☐ Some robots are designed to explore underwater, go down into volcanoes, and other planets.  
☐ Some robots are designed to explore underwater, go down into volcanoes, and travel to other planets.
4. ☐ It is believed that robots are going to increase our quality of life and took care of us.  
☐ It is believed that robots are going to increase our quality of life and taking care of us.  
☐ It is believed that robots are going to increase our quality of life and to take care of us.
5. ☐ You should take an aspirin, have a shower, or go to sleep if you feel bad.  
☐ You should take an aspirin, have a shower, or to go to sleep if you feel bad.  
☐ You should take an aspirin, have a shower, or going to sleep if you feel bad.
6. ☐ Robots are replacing jobs, improving our life and to be part of our daily life.  
☐ Robots are replacing jobs, improving our life and being part of our daily life.  
☐ Robots are replacing jobs, improving our life and are part of our daily life.
7. ☐ Doing exercise and to eat well will help you to be healthy and fit.  
☐ Doing exercise and to eating well will help you to be healthy and fit.  
☐ Doing exercise and eat well will help you to be healthy and fit.





## 2. READ THE ARTICLE AND CHOOSE TRUE OR FALSE.

### Will robots replace teachers?



Which job will be the most difficult for a robot? you would probably say doctors or teachers. We have watched in movies robot cleaners and factory workers, but it is difficult to imagine doctors as some jobs need human connection and

creativity. However, they already perform better than doctors at diagnosing illnesses. Also, some patients might feel more comfortable sharing personal information with a machine than a person. Could there be a place for robots in education? It is predicted that robots will do the main job of transferring information and teachers will only be like assistants. Intelligent robots will read students' faces, movements and maybe brain signals. Then they will adapt the information to each student.

One thing is certain. A robot teacher is better than no teacher at all. In some parts of the world, there aren't enough teachers and children under the age of 14 don't go to school. That problem could be solved by robots because they can teach anywhere and won't get stressed, tired, sick.

Teachers all over the world are leaving because it is a difficult job and they feel they work too much. Perhaps the question is not "Will robots replace teachers?" but "How can robots help teachers?" for example, office workers can use software to do things like organize and answer emails, arrange meetings and update calendars. Teachers waste a lot of time doing non-teaching work, including more than 11 hours a week marking homework. If robots could cut the time teachers spend marking homework and writing reports, teachers would have more time and energy for the parts of the job humans do best.

1. All jobs seem as if they can be easily done by robots or computers. ☐ TRUE ☐ FALSE
2. Robots are always better at diagnosing illnesses than doctors. ☐ TRUE ☐ FALSE
3. Robots are going to replace teachers by 2037. ☐ TRUE ☐ FALSE
4. One advantage of robot teachers is that they don't need to rest. ☐ TRUE ☐ FALSE
5. Robot assistants could help teachers by marking homework and writing reports. ☐ TRUE ☐ FALSE
6. Some teachers use robots to reduce their time answering emails and marking homework. ☐ TRUE ☐ FALSE
7. There aren't enough teachers in the world. ☐ TRUE ☐ FALSE