

# Pete's Dragon

## Before watching the movie...

1) ANSWER these questions (with help [here](#)):

In what year was it released? \_\_\_\_\_

How long is the movie? \_\_\_\_\_

What is the IMDb rating? \_\_\_\_\_

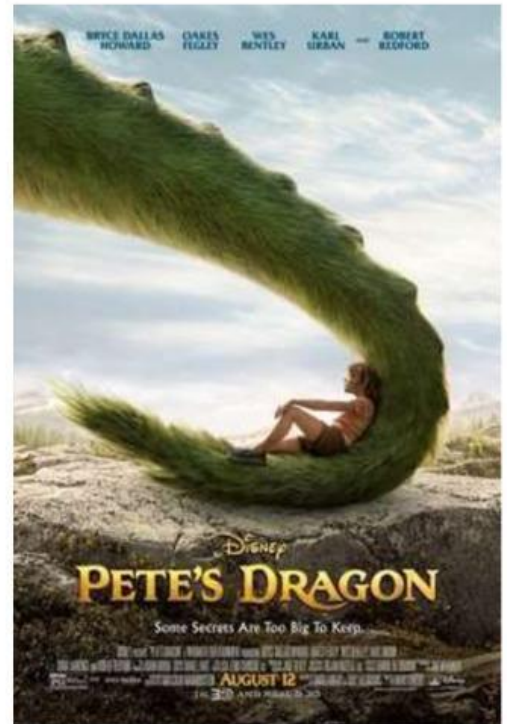
Who was the movie director? \_\_\_\_\_

What is the French PG rating? \_\_\_\_\_

What is the British PG rating? \_\_\_\_\_

What is the American PG rating? \_\_\_\_\_

In what year was the original "Pete's Dragon" movie released? \_\_\_\_\_



2) LINK these people to their picture and their character in the movie.

Bryce Dallas Howard •

• Elliot

Elliot •

• Gavin

Karl Urban •

• Grace

Oakes Fegley •

• Jack

Oona Laurence •

• Meacham

Robert Redford •

• Natalie

Wes Bentley •

• Pete



## After watching the movie...

3) COMPLETE this text with the correct verb in the summary of the movie.

In Disney's 2016 remake of *Pete's Dragon*, young orphan Pete \_\_\_\_\_ in the forest with Elliot, a gentle, invisible dragon. When a forest ranger and her family \_\_\_\_\_ him, Pete must \_\_\_\_\_ to human life while he \_\_\_\_\_ to \_\_\_\_\_ Elliot from hunters who \_\_\_\_\_ a proof that the dragon \_\_\_\_\_.

4) ANSWER the following questions.

- a- In what year did Pete and his parents had a car crash? \_\_\_\_\_
- b- How old was Pete then? \_\_\_\_\_
- c- Which animal ran after Pete? \_\_\_\_\_
- d- What is the colour of the dragon which saved him? \_\_\_\_\_
- e- Who runs after Pete in the forest? \_\_\_\_\_
- f- Who knocks Pete unconscious? \_\_\_\_\_
- g- Where is Pete when he wakes up? \_\_\_\_\_
- h- Where does Elliot go to find Pete? \_\_\_\_\_
- i- What does Pete give to Grace? \_\_\_\_\_
- j- Who met the dragon when he was a child? \_\_\_\_\_
- k- What happens to Elliot the next day? \_\_\_\_\_
- l- On what vehicle does Elliot escape? \_\_\_\_\_
- m- Where does Gavin try to stop them? \_\_\_\_\_
- n- What does Elliot do at the top of the bridge? \_\_\_\_\_
- o- What happens to the bridge next? \_\_\_\_\_
- p- Who appears on the back of Elliot? \_\_\_\_\_
- q- What vehicle approaches then? \_\_\_\_\_
- r- What object does Elliot show to Pete once safe? \_\_\_\_\_
- s- Where does Elliot go after that? \_\_\_\_\_
- t- Where does Pete go after that? \_\_\_\_\_
- u- Who is with Elliot at the end of the movie? \_\_\_\_\_