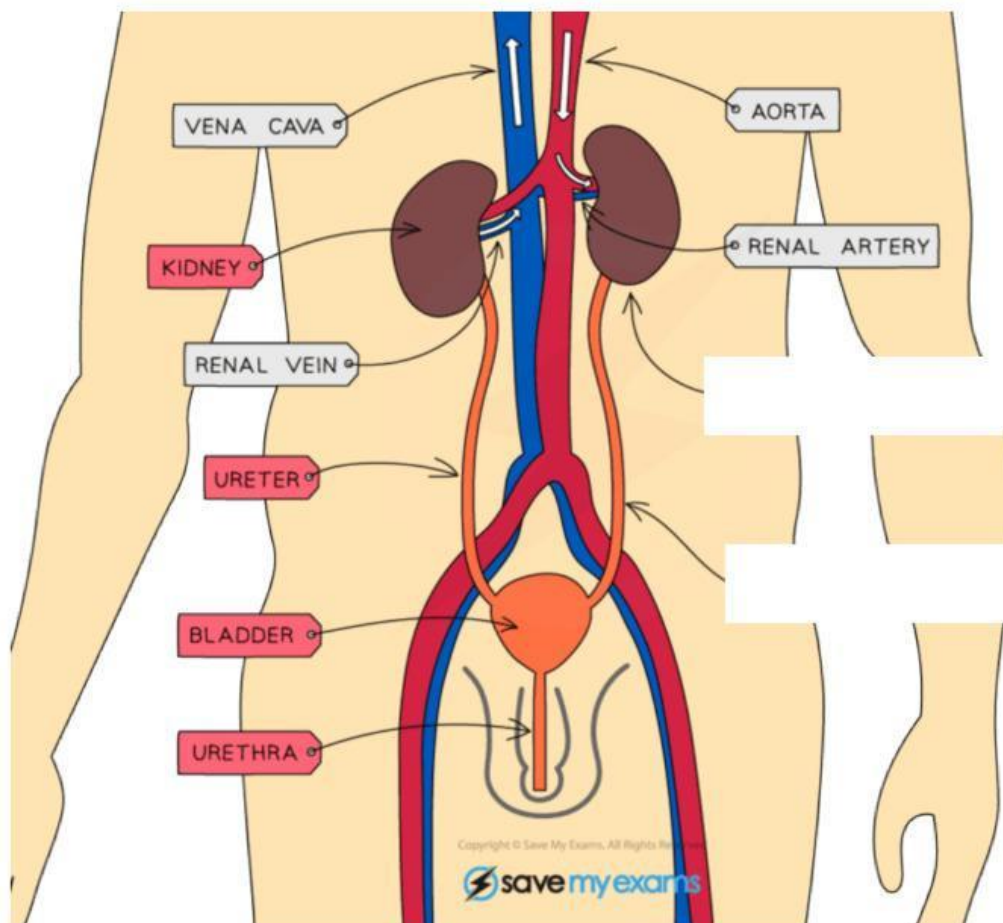


Name: \_\_\_\_\_ Date: \_\_\_\_\_

**Lesson objective:**

- ☐ **Describe** the structure of the human kidney, limited to: fibrous capsule, cortex, medulla, renal pelvis, ureter and branches of the renal artery and renal vein.

### 14.1.3 Structure of the Human Kidney

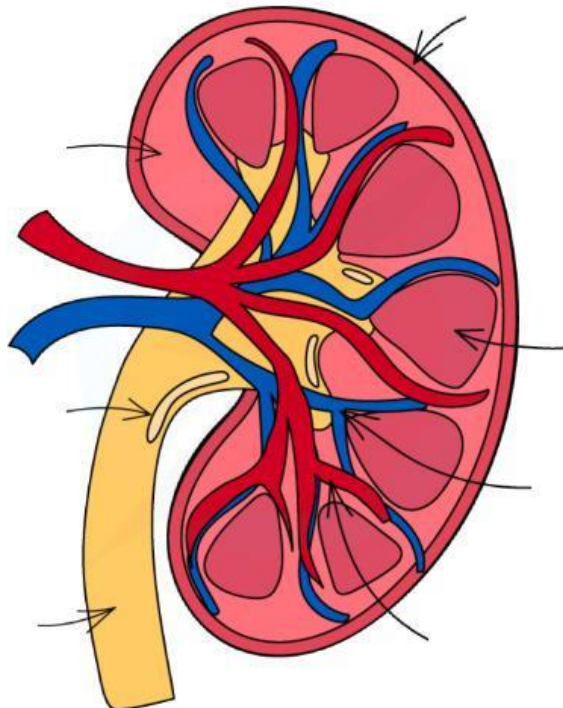


*The position of the kidneys and their associated structures*

The function of the kidneys & their associated structures

Structure	Function
	Carries oxygenated blood (containing urea and salts) to kidneys
	Carries deoxygenated blood (that has had urea and excess salts removed) away from kidneys
	Regulates water content of blood and filters blood
	Carries urine from kidneys to bladder
	Stores urine (temporarily)
	Releases urine outside of the body

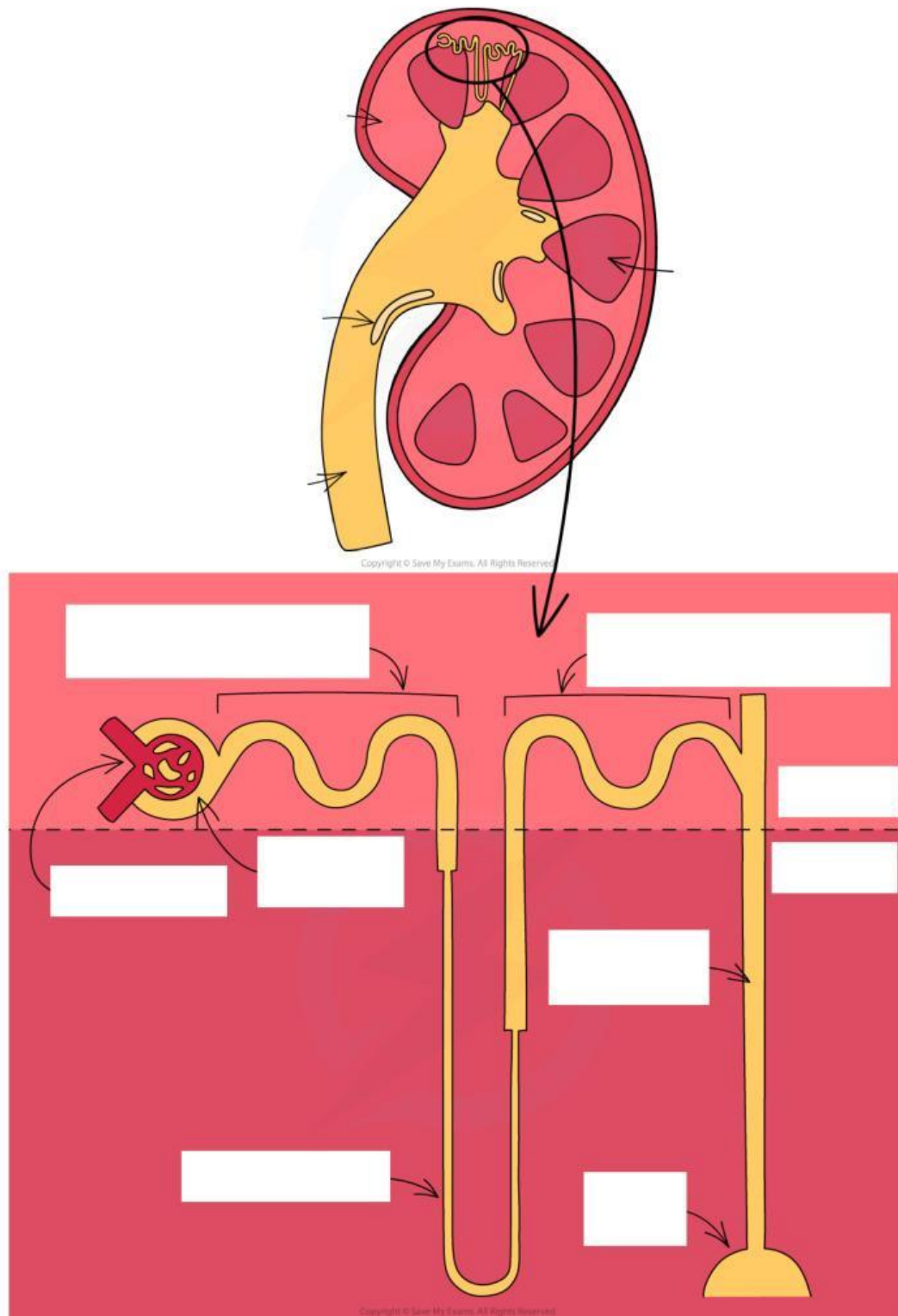
Copyright © Save My Exams. All Rights Reserved



Copyright © Save My Exams. All Rights Reserved

*A cross-section of a kidney (as seen when cut in half vertically)*

### 14.1.4 Nephron Structure



Renal pelvis

*The location and structure of a nephron*

Distal convoluted tubule

Proximal convoluted tubule

Glomerulus

Loop of Henle

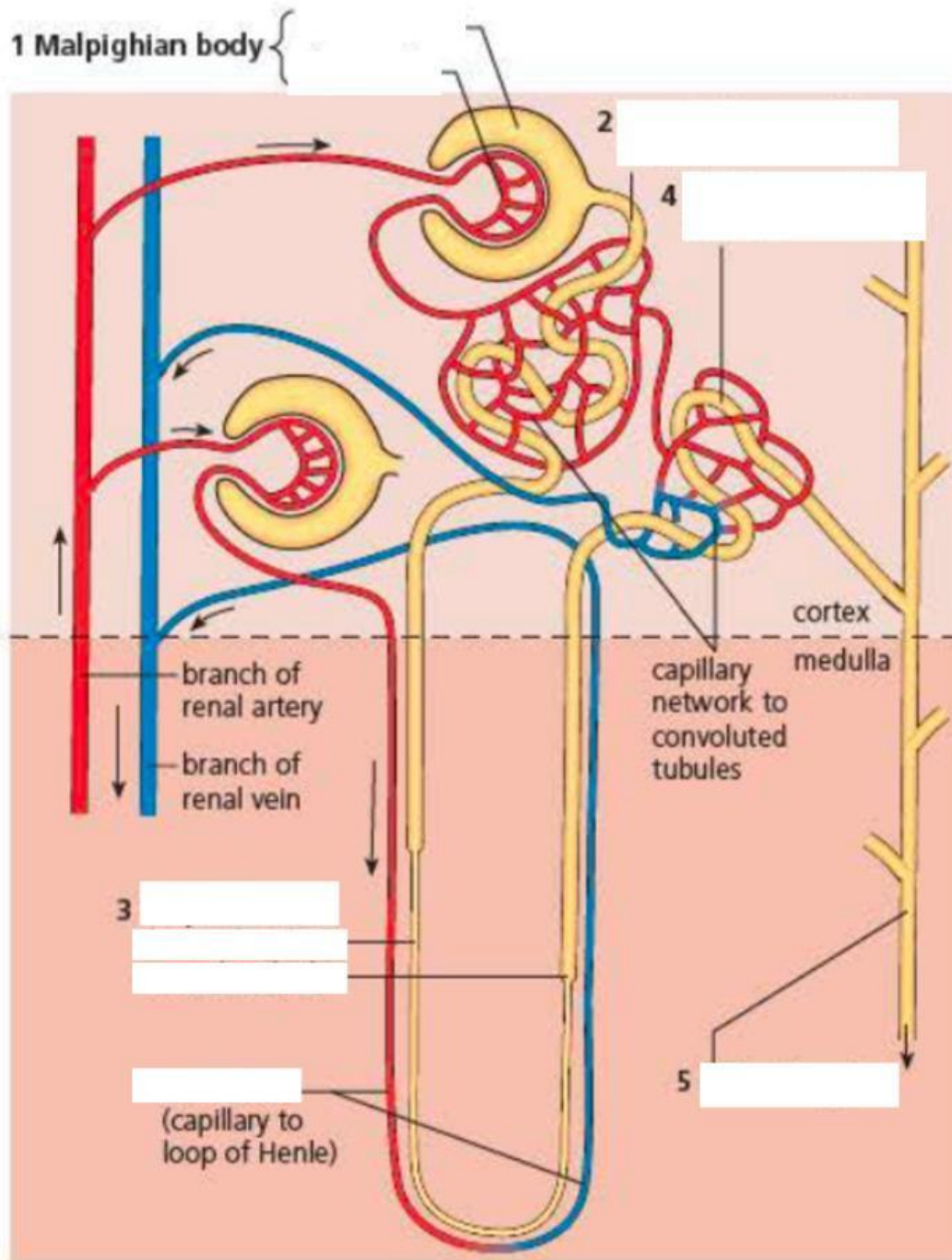
Medulla

Cortex

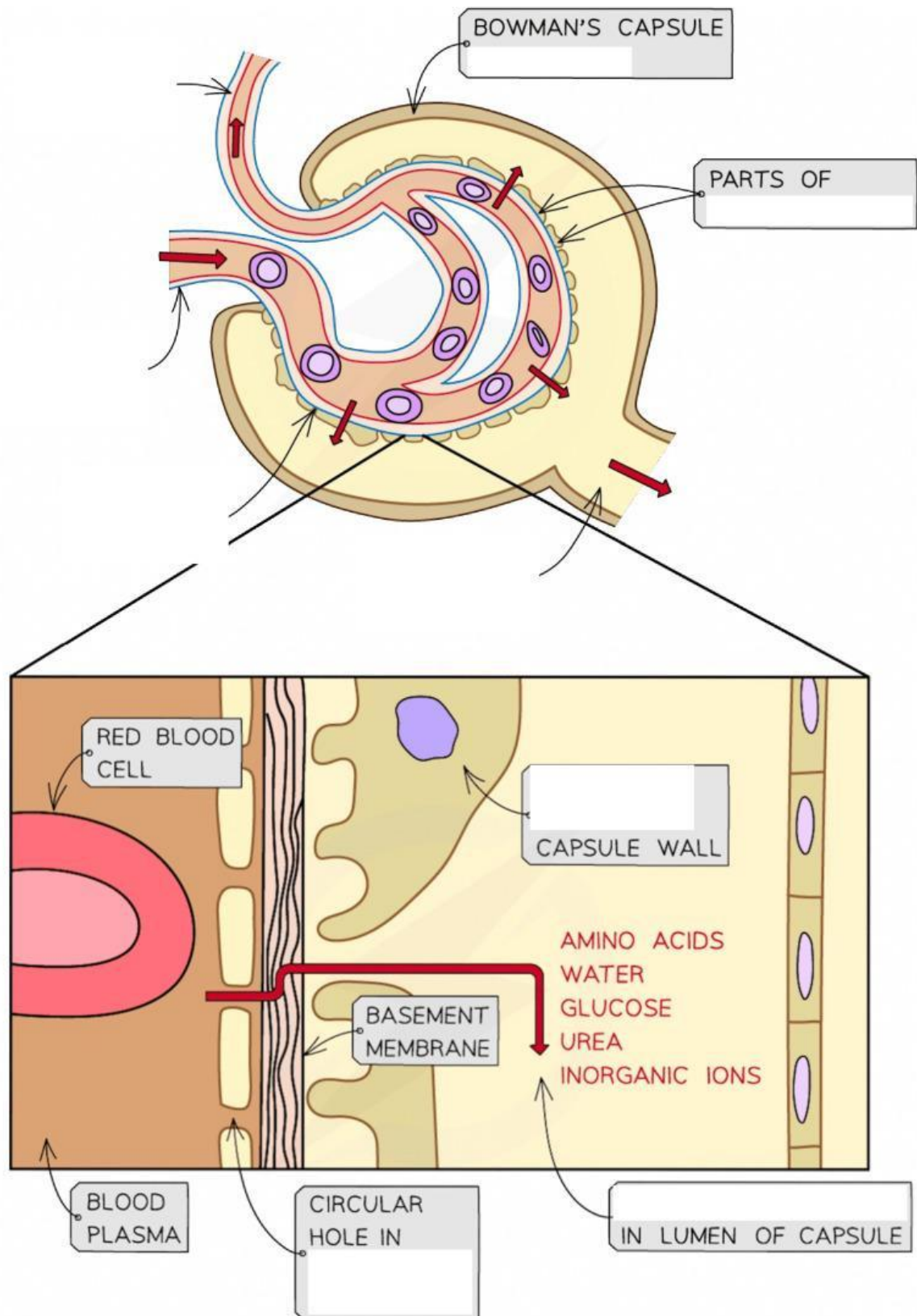
Bowman's capsule

Collecting duct

## nephron with blood capillaries







Copyright © Save My Exams. All Rights Reserved