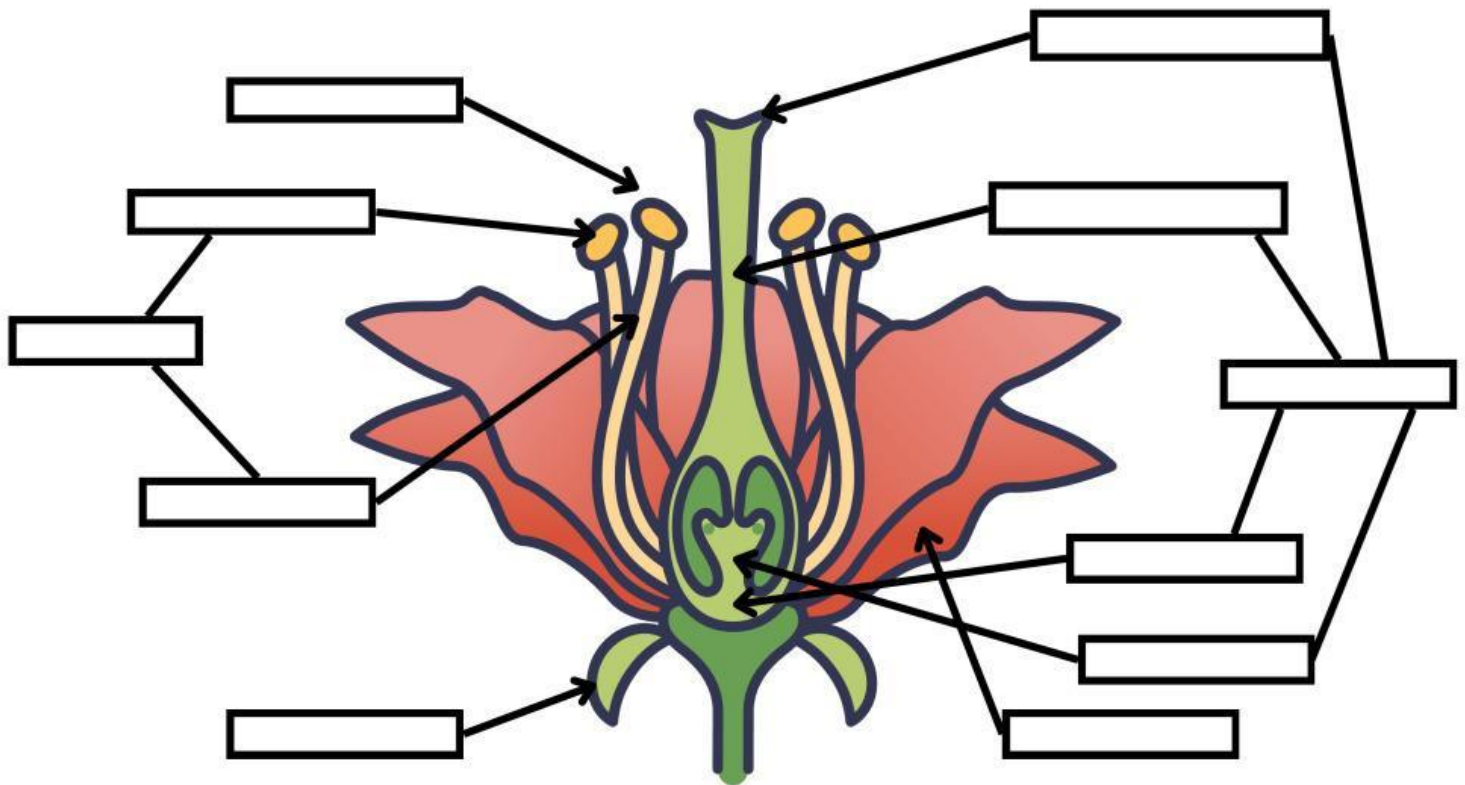


Male parts are _____

Female parts are _____



Plants are _____ of living things. They can _____ almost anywhere. They can grow in: _____ or _____
Plants can be _____ (tree) or _____ (mosses)

Most plants have three parts:

- ☐ Tree, bush and grass
- ☐ Roots, stems, leaves

Roots:

- ☐ Hold the plant in the ground. They absorb the water and minerals
- ☐ Give the plants supports. Water and minerals are transported through the stem to the rest of the plant
- ☐ Are the plant makes its food, with the help of sunlight

Stems:

- ☐ Hold the plant in the ground. They absorb the water and minerals
- ☐ Give the plants supports. Water and minerals are transported through the stem to the rest of the plant
- ☐ Are the plant makes its food, with the help of sunlight

Leaves:

- ☐ Hold the plant in the ground. They absorb the water and minerals
- ☐ Give the plants supports. Water and minerals are transported through the stem to the rest of the plant
- ☐ Are the plant makes its food, with the help of sunlight

Trees are the _____ plants. They have _____ and a _____, thick stem called _____

Bushes are _____ than trees. They have _____ branches.

Grasses usually have a _____ and thin stem. The stems are usually _____ and _____ in the wind.

The **stem** can be:



Leaves can be



They have different _____
We _____ leaves

Flowering plants

Produce flowers and fruit. Seeds develop inside the fruit

☐ Angiosperms

☐ Gymnosperms

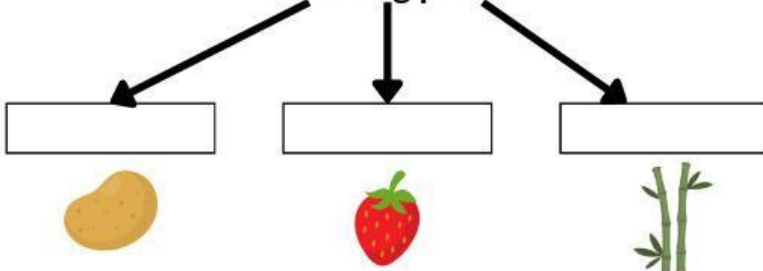
Do not produce fruit. Seeds develop inside cones

☐ Angiosperms

☐ Gymnosperms

Non-flowering plants reproduces with _____ and not produce _____

Flowering plants



WHAT IS POLLINATION?

When _____ lands on the stigma of a plant, it _____ to the ovary
The _____ grows into a _____
The _____ develop inside the fruit

WHAT IS PHOTOSYNTHESIS?

For photosynthesis to take place, plants need:

☐ Water

☐ Minerals

☐ Light energy

☐ Carbon dioxide

The green color of the leaves called

☐ Photosynthesis

☐ Chlorophyll