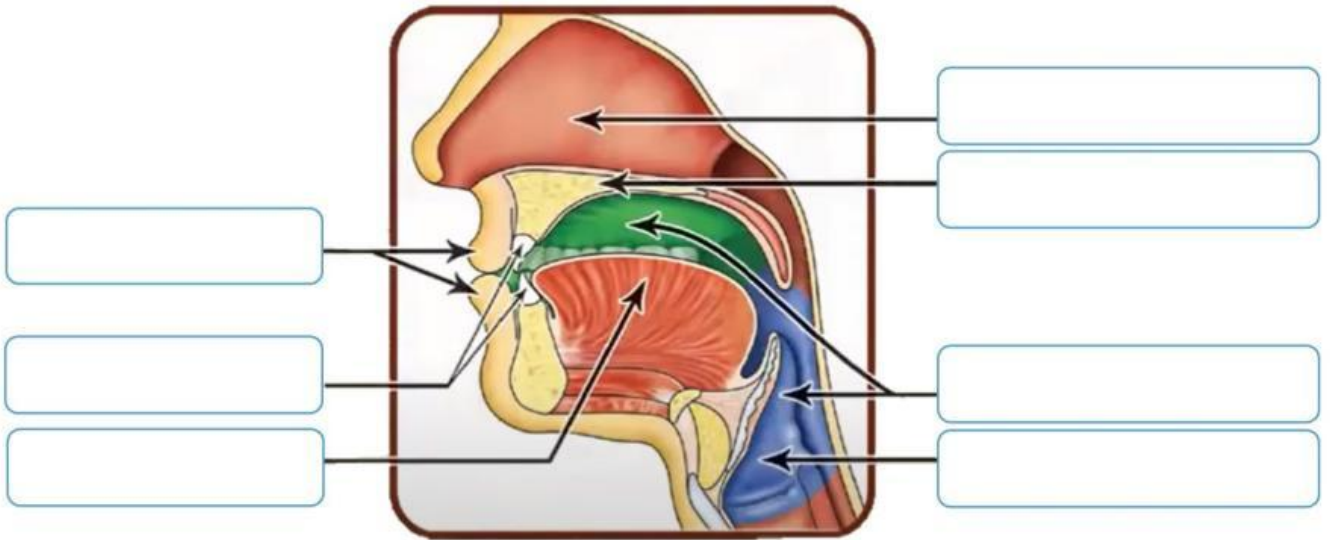


MAIN ARTICULATION POINTS

(مخارج الحروف)

Drag the parts of the mouth to the correct position.
Then ✓ the main articulation points.



Lips

Teeth

Throat

Tongue

Nasal Cavity

Upper Palate

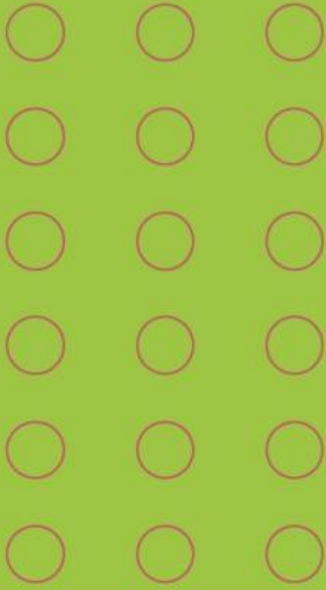
Empty Space in
mouth and throat

MAIN ARTICULATION POINTS (مخارج الحروف)

Place each letter in the correct group according to
the articulation points.

ض ص ش س ز ر ذ د خ ح ج ث ت ب ء
ي ه و ن ن م م ل ك ق ف غ ع ظ ط
ا و ي

Tongue



Empty Space in mouth and throat



Throat



Nasal Cavity



Lips

