

## PRACTICE TEST 1

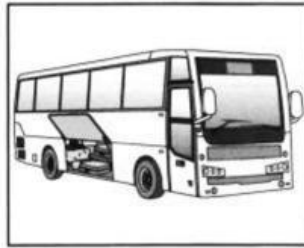
### LISTENING

Questions 1 – 5. For each question, choose the correct answer.

1. How will David travel?



A



B



C

2. What time will Roger see the dentist?



A



B



C

3. How much will Vera pay for her lunch?



A



B

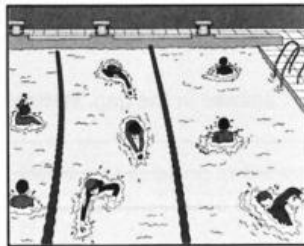


C

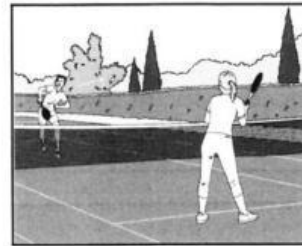
4. What will the friends do in the afternoon?



A

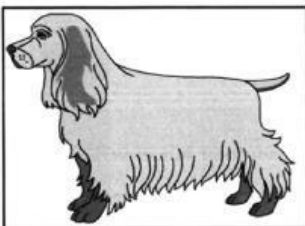


B

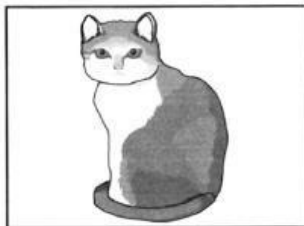


C

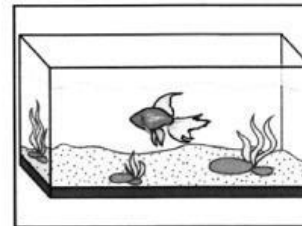
5. What pet will Janet have?



A



B



C

## PART 2

Questions 6 – 10. You will hear Greta talking to Anthony about holidays. What type of holiday will each person go on? For question 6 – 10, choose a letter A – H next to each person.

Example: Anthony – B

People			Type of holiday
6	Julie	<input type="checkbox"/>	A sightseeing
7	Greta	<input type="checkbox"/>	B walking
8	John	<input type="checkbox"/>	C cycling
9	Jenny	<input type="checkbox"/>	D camping
10	Ed	<input type="checkbox"/>	E no holiday
			F sailing
			G skiing
			H beach