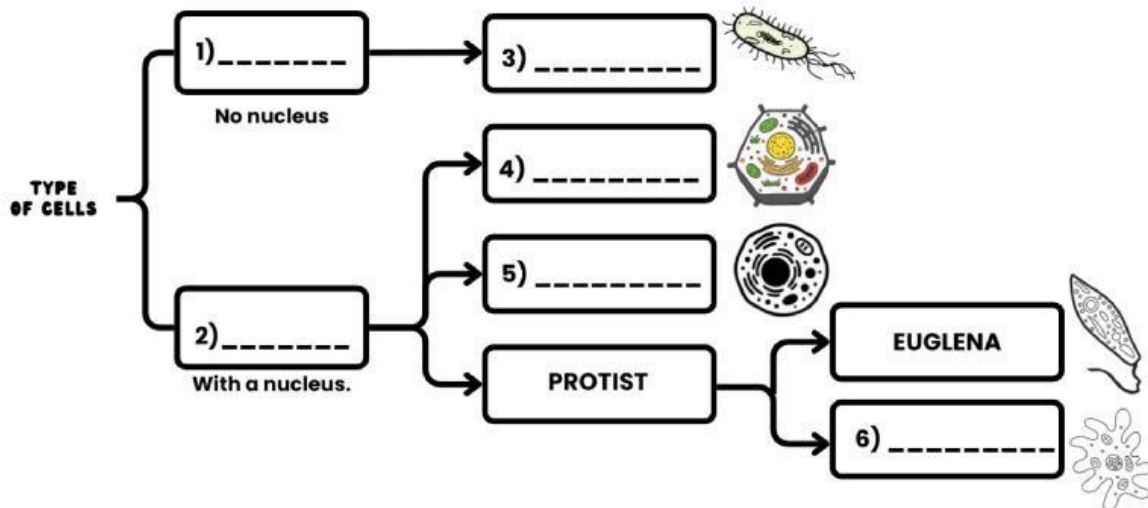


SCIENCE - PRACTICE REMEDIAL EXAM  
I TRIMESTER / JR. HIGH SCHOOL

**1ST PARTIAL INFORMATION**

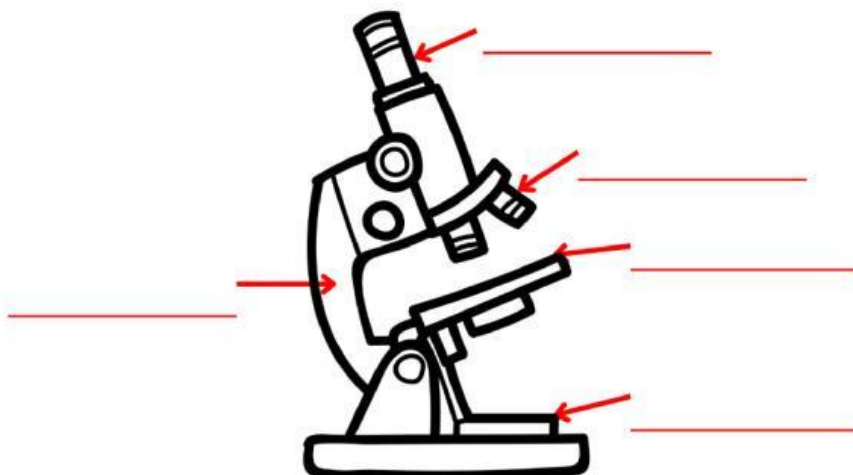
**I. Complete the following concept map about type of cells with the next words.**

a) Bacteria	b) Prokaryotic cell	c) Animal cell
d) Plant cell	e) Eukaryotic cell	f) Amoeba



**II. Complete the name of the parts of the microscope used to observe microorganisms.**

a) Objective lens	b) Arm	c) Stage	d) Light	e) Eyepiece
-------------------	--------	----------	----------	-------------



**III. Read the sentences and choose the correct answer. Which of the next options defines what a cell is?**

- a) A device used to make phone calls.      b) Smallest unit of a chemical element.  
c) A group of organs.      d) Basic structural unit of all living organisms.

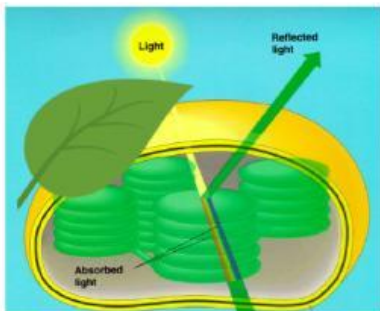
**IV. Classify the organelles of animal cells and plant cells. In the middle add the ones they have in common.**

Chloroplasts	Centrioles	Cell membrane	Cell wall	Nucleus	Cytoplasm
--------------	------------	---------------	-----------	---------	-----------

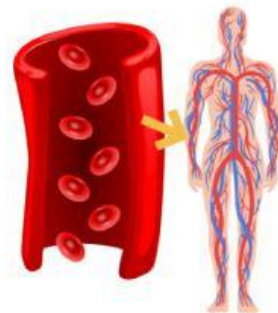
Only in Plant cell	In common (plant and animal cell)	Only in Animal cell

**V. According to the image add the name of the specialized cells.**

Options: Red blood cells / Plant leaf cells / Animal cells / Neuron
---







## 2ND PARTIAL INFORMATION

VI. Select the options to classify the levels of organization.



Options:  
Organ  
Specialized cell  
Organism  
Tissue  
System

VII. According to the level of organization, select the options that express examples for each one.

Nervous tissue	Animal	Heart	Red blood cell	Human
Circulatory system	Digestive system	Nerve cell	Muscle tissue	Lung

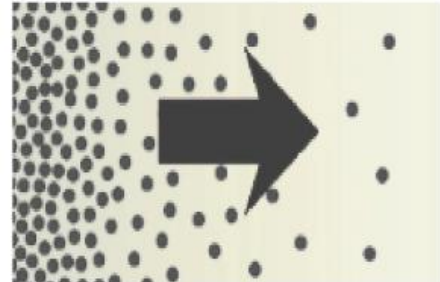
Organ		
Specialized cell		
Organism		
Tissue		
System		

VIII. Select the organ where nutrients are absorbed.

- a) lungs      b) bronchiole      c) heart      d) trachea  
e) alveoli      d) small intestine      e) stomach      f) skin

**IX. The next image represents diffusion. Select the correct option that describes this process of transportation of particles.**

- a) The movement goes from low to high concentration.
- b) The movement goes from low to low concentration.
- c) The movement goes from high to low concentration.
- d) The movement goes from high to high concentration.



**X. In the left part of the next illustration label the skeleton parts with their correct name and in the right side the human muscles names. Use the next words.**

Thigh muscles	Abdominal muscles	Neck muscles	Biceps
Pelvis	Skull	Ribcage	Femur

