

## LISTENING PRACTICE TEST

Part 1. Listen to the audio and choose the correct picture for each question. (2)

1. What time does the train go?



A



B

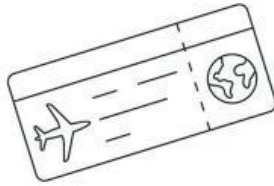


C



D

2. What did they forget to bring?



A



B



C



D

3. What was the weather like on Beth's holiday?



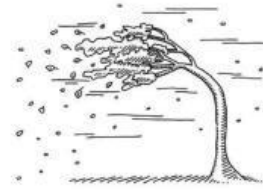
A



B



C



D

4. What can't the students do in class?



A



B



C



D

5. What will Sam do?



A



B



C



D

**Part 2. Listen to the audio and decide if the statements are true (T) or false (F). (🔊 010)**

- |   |      |       |
|---|------|-------|
| 1. There are two bedrooms in the flat.                        | True | False |
| 2. The flat is at 27 Eastley, opposite a train station.       | True | False |
| 3. There isn't any furniture in the flat.                     | True | False |
| 4. The man will see the flat at 5:30 on Tuesday.              | True | False |
| 5. The flat will be free to rent from March 3 <sup>rd</sup> . | True | False |

New words:

- **furniture** (n) /'fɜ:nɪʃə(r)/ đồ nội thất
- **rent** (v) /rent/ thuê (nhà, phòng, xe ...)
- **rent** (n) tiền thuê nhà

**Part 3. Listen to the monologue and choose the correct answer for each question. (🔊 16)**

1. Why is it easier to walk around in New York?  
A. The streets are safer.   B. There's less traffic.   C. The city is smaller.   D. The weather is nicer.
2. How is the underground in London?  
A. It is not good.   B. It's expensive.   C. It's air-conditioned.   D. It's very old.
3. What does the man really love in London?  
A. the parks   B. the old buildings   C. the forests   D. the markets
4. What is the weather like in London in winter?  
A. It's colder and snowier.   B. There are fewer snow storms.  
C. It's warmer, but the sky is so gray.   D. It is sunny and warm.
5. What does the man think about Londoners?  
A. They are friendly with strangers.   B. Their life is faster than New Yorkers.  
C. They get angry as often as Americans.   D. They are more polite than New Yorkers.