

## WORKSHEET

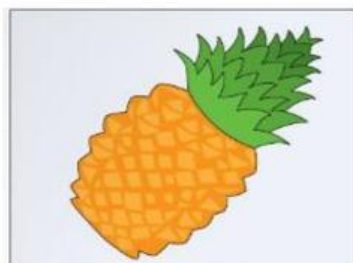
FF3-Unit 12



Teacher's  
feedback



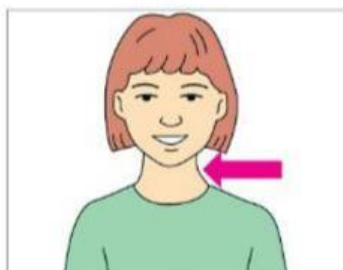
### Task 1: Look and write answer.



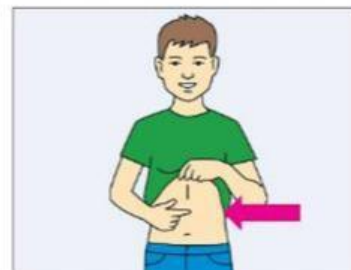
a pineapple



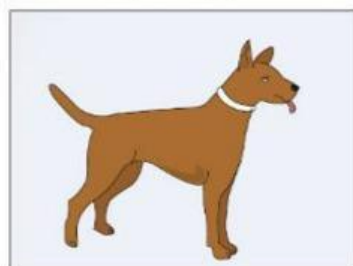
a moustache



a neck



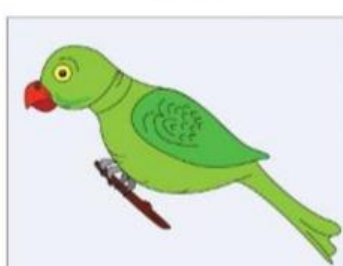
a stomach



a dog



watermelon



a parrot



tea

- 1 This is a part of your body above your legs.  
Food goes here.

---

- 2 You drink this in a cup. It is hot and brown.

---

- 3 This animal can fly and it often lives in  
the jungle.

---

- 4 This hair is on your face. It is above your  
mouth and under your nose.

---

- 5 People have this between their head and  
their shoulders.

---



## Task 2: Look and convert **Irregular verbs**.

Verbs	V2
lead	
spend	
make	
speak	
tell	
wear	
win	
leave	
hear	
take	

Verbs	V2
set	
sit	
ride	
teach	
think	
buy	
begin	
draw	
have	
keep	

Verbs	V2
get	
eat	
lie	
lose	
mean	
meet	
find	
sell	
run	
say	



**Task 3: Listen and tick the correct answer.**

What does Nick want to do today?



A ☐



B ☒



C ☐

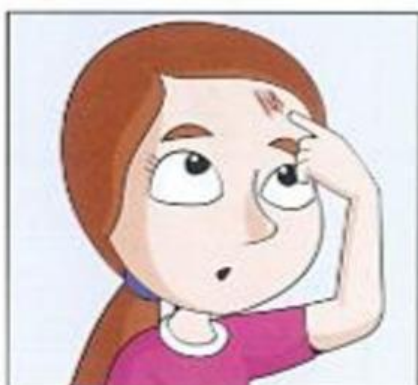
1 What part of her body did Pat hurt?



A ☐



B ☐



C ☐

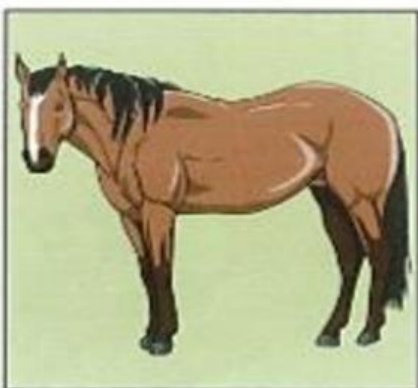
2 What animal did Sally see at the farm?



A ☐



B ☐



C ☐



3 What does Peter want to do on his birthday?



A ☐



B ☐



C ☐

4 What did Mary lose at the park?



A ☐

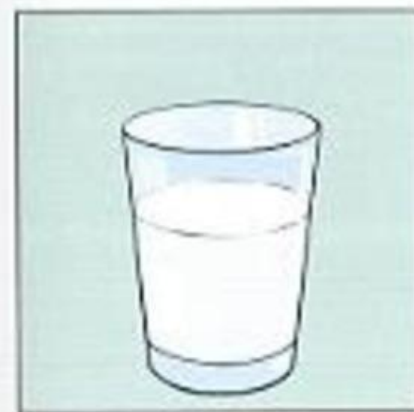


B ☐



C ☐

5 What does Tom have to drink?



A ☐



B ☐



C ☐