

WEATHER & CLIMATE

1 TRUE or FALSE

1. Weather is always the same. ____
 2. The sun is the main source of energy for weather. ____
 3. The water cycle has four stages. ____
 4. Warm air goes down and cold air goes up. ____
 5. The equator receives constant heat from the sun. ____
-

2 FILL IN THE BLANKS

1. Weather is caused by the interaction of air, water and ____.
 2. When water heats, it ____.
 3. Clouds are made of tiny drops of water or ____.
 4. Warm air creates ____ pressure areas.
 5. Solar energy comes from the ____.
-

3 MATCH WITH ARROWS

- | | |
|------------------|------------------------------|
| 1. Evaporation | a. Water falls to the ground |
| 2. Condensation | b. Water turns into gas |
| 3. Precipitation | c. Clouds are formed |
| 4. Atmosphere | d. Layer of air around Earth |
-

4 PUT IN ORDER

Write the **correct order (1–4)** of the water cycle.

- ☐ Condensation
 - ☐ Precipitation
 - ☐ Collection
 - ☐ Evaporation
-

5 MULTIPLE CHOICE

Tick the correct answer.

1. Which air rises?
 - a) Cold air
 - b) Warm air
 - c) Heavy air
 2. Which place receives more solar energy?
 - a) The poles
 - b) The equator
 - c) The oceans
 3. Where does weather happen?
 - a) Troposphere
 - b) Stratosphere
 - c) Exosphere
-

6 ATMOSPHERE LAYERS

1. Layer where planes fly and weather happens: _____
 2. Layer with the ozone layer: _____
 3. Layer where satellites orbit: _____
-

7 True or False

1. The **troposphere** is the layer of the atmosphere closest to the Earth's surface.
 2. Climate is the pattern of weather over a **short** period of time.
 3. In the **water cycle**, water evaporates, condenses, and precipitates.
 4. **Deciduous** trees keep their leaves all year round.
 5. Using **renewable energy** sources like wind or solar helps in the fight against climate change.
-

8 Complete the Sentence**renewable****ecosystem****altitude****fossil****tundra**

1. An _____ is made up of living things and the non-living things that surround them.
2. Burning _____ fuels releases gases that cause global warming.
3. The higher the _____ of a place, the colder the temperatures usually are.
4. The _____ biome is characterized by very cold climate and is found at the extreme North and South of our planet.
5. Solar power is an example of _____ energy.

9 Match the Concepts

Climate Zone	Characteristic
1. Tropical	A. Short summers and very cold winters.
2. Polar	B. Very little precipitation (rain).
3. Temperate	C. Hot and humid all year round.
4. Dry	D. Warm in the summer and mild winters.

10 Order the Steps

Put the stages of the **Water Cycle** in the correct order (1 to 4).

Stage	Order
Water turns into vapor and rises into the atmosphere.	
Water falls as rain, snow, or hail.	
Vapor cools down and turns into clouds.	
Water is stored in seas, rivers, and lakes.	

11**SELECT THE CORRECT ONE:**

- 1) Which layer of the atmosphere is the closest to the Earth's surface?
A. Thermosphere B. Mesosphere
C. Stratosphere D. Troposphere
 - 2) In which layer do jet planes usually fly, above the weather?
A. Troposphere B. Exosphere
C. Thermosphere D. Stratosphere
 - 3) What happens to the temperature as you go higher in the Troposphere?
A. It decreases (gets colder). B. It depends on the time of day.
C. It increases (gets hotter). D. It stays the same.
 - 4) Which is the correct order of the first three layers of the atmosphere, starting from the Earth's surface?
A. Mesosphere, Stratosphere, Troposphere
B. Exosphere, Thermosphere, Mesosphere
C. Troposphere, Stratosphere, Mesosphere
D. Stratosphere, Troposphere, Mesosphere
-

12**COMPLETE THE SENTENCES:**

1. The sun heats water; it _____ (evaporates / freezes).
2. Air is heated by the _____ and landforms.
3. The equator receives constant heat from the _____.
4. Cold air sinks and creates a _____ pressure area.
5. The water cycle has _____ stages.

13**MATCH**

Evaporation
Condensation
Precipitation
Low pressure
High pressure

Clouds form in this process.
Water turns into vapor.
Heavy air pushes down.
Air rises and cools.
Rain or snow falls

14

FILL IN THE BLANKS WITH WORDS FROM THE BOX

polar tropical dry temperate continental

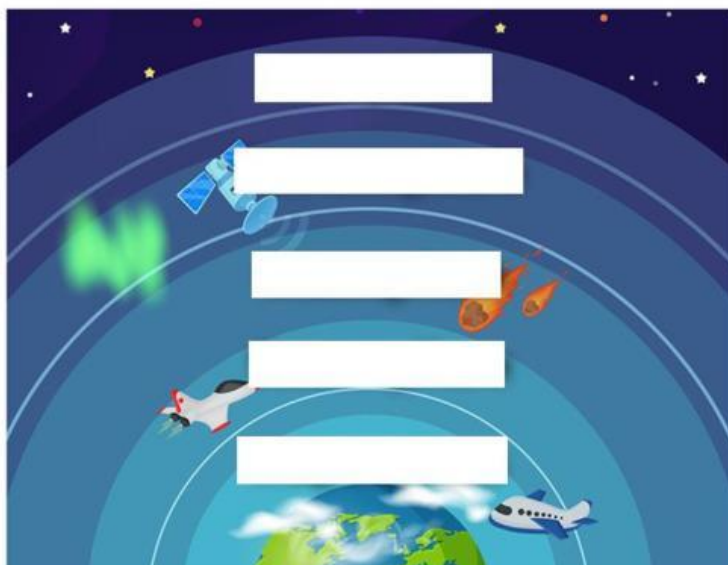
1. warm in the summer + mild winters without much snow _____
2. hot and humid all year round + large amounts of rain _____
3. cold all year long with lots of snow + short summers _____
4. very little precipitation + very high temperatures _____
5. warm-to-cool summers + very cold winters with some snowstorms

15

TRUE OR FALSE?

1. Mountains force air up and release cold air.
2. Deserts have very high precipitation.
3. Tropical climates are hot and humid all year round.
4. Polar areas have short summers with lots of snow.
5. The stratosphere reflects the most energy.

16

JOIN**Stratosphere****Troposphere****Exosphere****Mesosphere****Thermosphere**

This is the outer layer of the atmosphere. Artificial satellites are there.
Energy first passes through here. Space satellites are there.
Most objects from space are burned up here .
Is where the Ozone layer is.
Is the closest layer to the Earth. This is where all weather takes place and where human live .

STRATOSPHERE
THERMOSPHERE
TROPOSPHERE
EXOSPHERE
MESOSPHERE

17

FILL IN THE BLANKS

The Five Global Climates

	<input type="text"/>	<input type="text"/>	<input type="text"/>
Temperate	• hot and humid all year round	• very little precipitation	• warm in the summer
Polar	• large amounts of rain	• very high temperatures	• mild winters without much snow
Tropical			
Continental	<input type="text"/>	<input type="text"/>	
Dry	• warm-to-cool summers • very cold winters with some snowstorms	• cold all year long with lots of snow • short summers	

18 FILL IN THE BLANKS

ECOSYSTEMS



--	--	--	--



--	--	--	--

rainforests

tundra

grasslands

Mediterranean
forests

deserts

coniferous
forests

aquatic

deciduous
forests