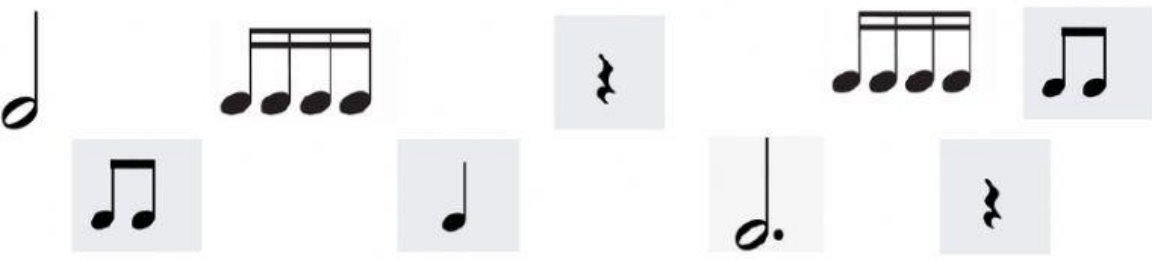


Name: \_\_\_\_\_

Grade: \_\_\_\_\_

## Rhythmic Dictation

Listen, drag and drop the notes  
from the options given:



1.  $\frac{4}{4}$  \_\_\_\_\_

☐

2.  $\frac{4}{4}$  \_\_\_\_\_

☐

3.  $\frac{4}{4}$  \_\_\_\_\_

☐

## Melodic Dictation

Match the melody with the sound

☐☐☐☐

Write the melodic dictation on the web page for free notation. Once you have finished, save the file as a PDF and upload it to Classroom. If you can not enter the Web page, write it on paper and upload it to Classroom:

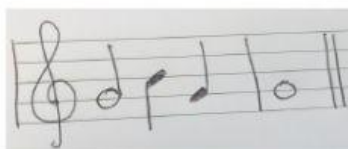
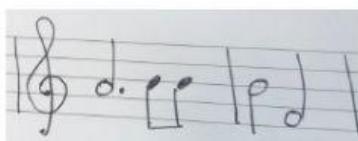
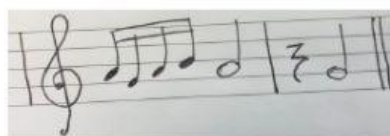
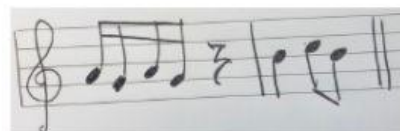
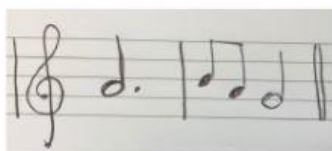
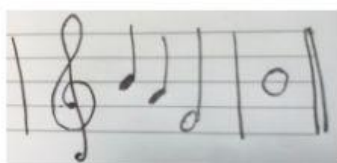
Dictation:

The web page for free notation:

[Click Here](#)

## Time Signatures

Drag the musical excerpts into the column with the correct time signature



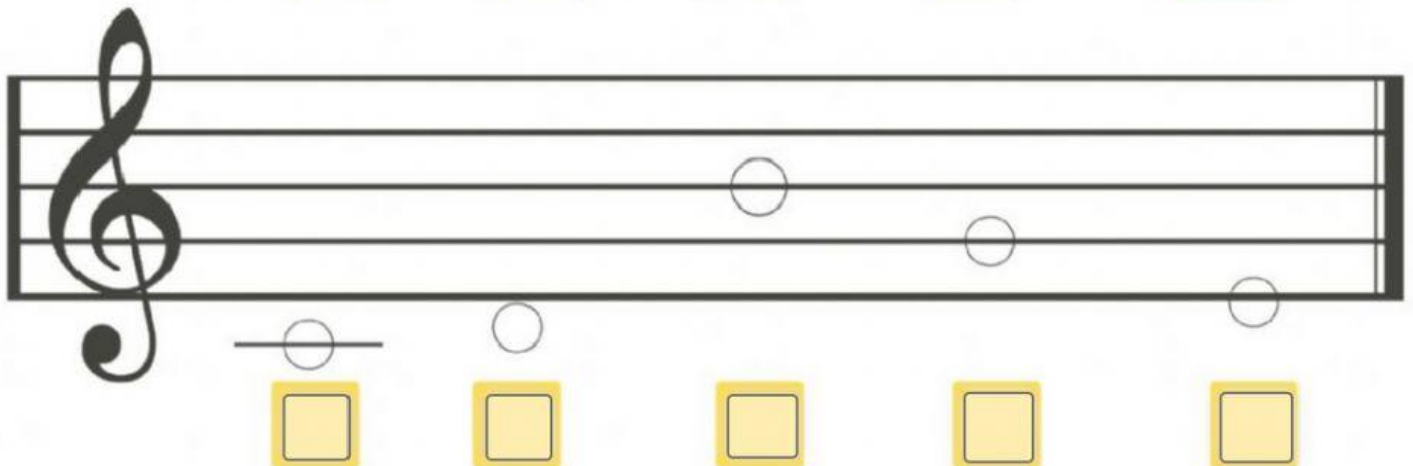
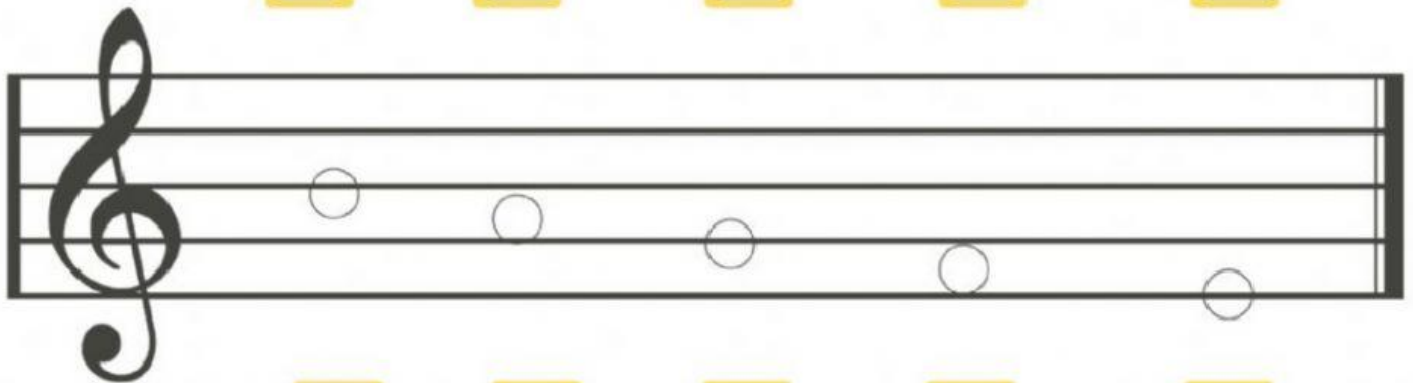
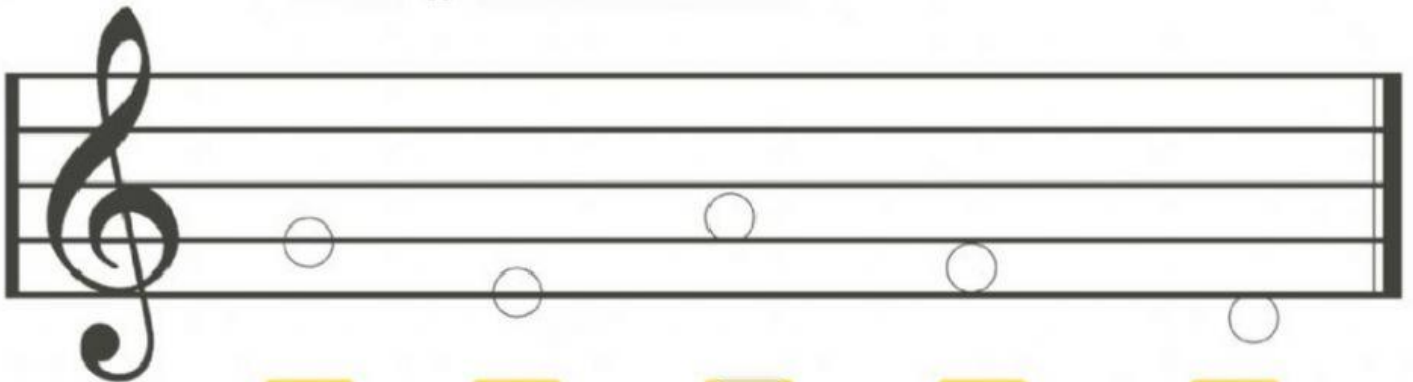
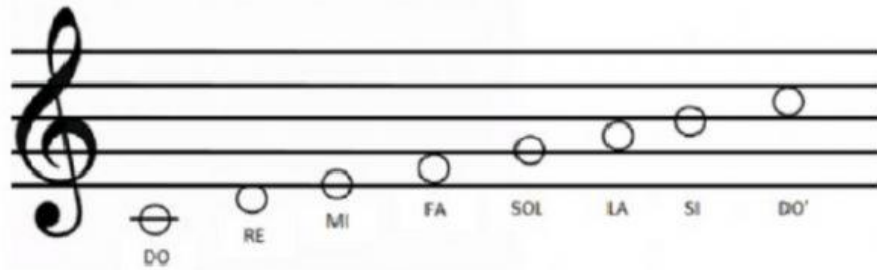
**2/4 time**

**3/4 time**

**4/4 time**

# C Scale

Write the name of each note using letters: A B C ....



# Major Scales

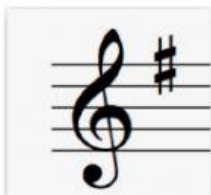
Answer the next questions:

1. What is an interval:

2. What is the Major Scale's pattern of intervals:

- a. **WWWHWWH**                      c. **WHWHWHW**  
b. **WWHWWWH**                      d. **WWHWHWH**

3. Join the Key signature with the correct image:



**D MAJOR**



**C MAJOR**



**G MAJOR**

4. Write a composition of 10 measures. Time: 3/4.

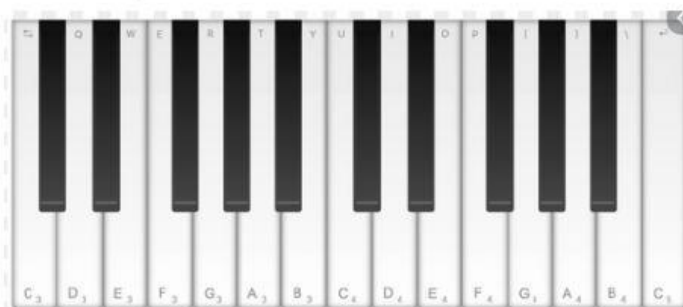
Key signature: D major. Use only the notes of the chord.

(If you can not enter the Web page, write it on paper and upload it to Classroom)

**The web page for free notation:**

[Click Here](#)

5. Use the piano Keyboard to answer the question:



Name the enharmonic equivalent of each note below

**D $\flat$**  = \_\_\_\_\_      **F $\flat$**  = \_\_\_\_\_      **B** = \_\_\_\_\_

**E $\sharp$**  = \_\_\_\_\_      **A $\flat$**  = \_\_\_\_\_      **D $\sharp$**  = \_\_\_\_\_

**G $\sharp$**  = \_\_\_\_\_      **B $\sharp$**  = \_\_\_\_\_      **C** = \_\_\_\_\_

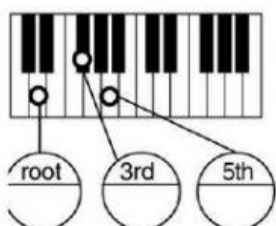
**F $\sharp$**  = \_\_\_\_\_      **B $\flat$**  = \_\_\_\_\_      **C $\flat$**  = \_\_\_\_\_

**E $\flat$**  = \_\_\_\_\_      **A $\sharp$**  = \_\_\_\_\_      **F** = \_\_\_\_\_

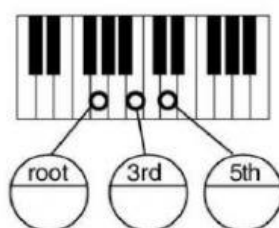
**E** = \_\_\_\_\_      **G $\flat$**  = \_\_\_\_\_      **C $\sharp$**  = \_\_\_\_\_

6. Identify Major triads. Write the name of the notes in the circles and provide the name of the chord:

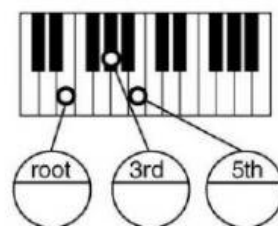
: Chord of \_\_\_\_\_



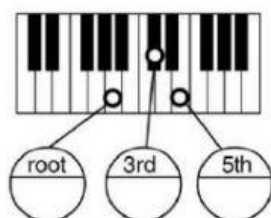
: Chord of \_\_\_\_\_



: Chord of \_\_\_\_\_



: Chord of \_\_\_\_\_



: Chord of \_\_\_\_\_

